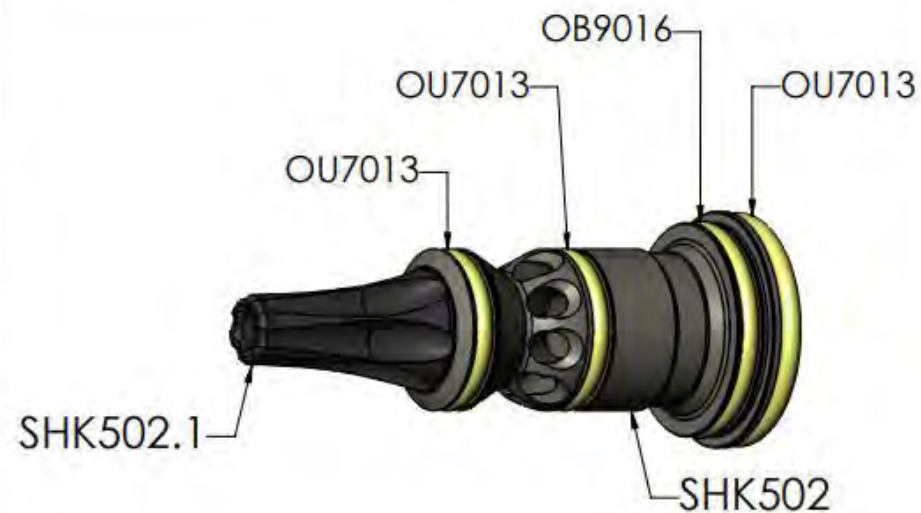
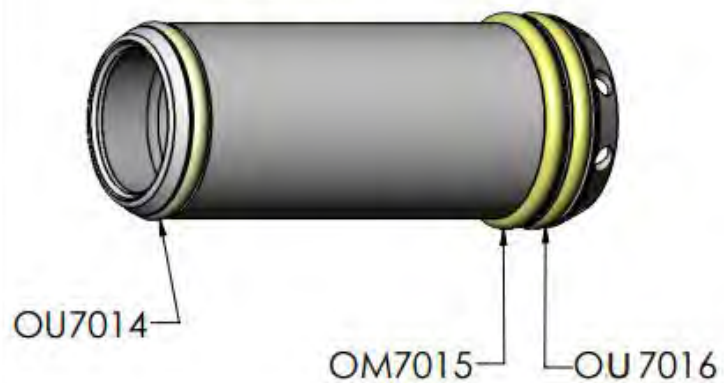


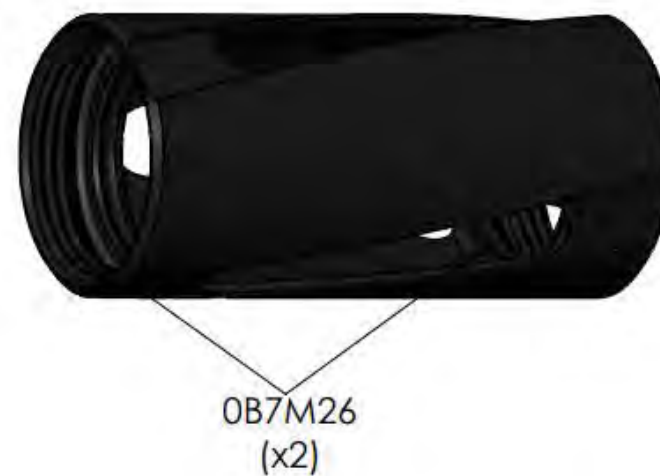
SHK561



SHK509



SHK408



GOG PAINTBALL S.A.

THE INFORMATION CONTAINED IN THIS DRAWING IS THE SOLE PROPERTY OF GOG PAINTBALL S.A. ANY REPRODUCTION IN PART OR WHOLE WITHOUT THE WRITTEN PERMISSION OF GOG PAINTBALL S.A. IS PROHIBITED.

- WSH005: I.D.=0.136", O.D.=0.280" INTERNAL TOOTH LOCK WASHER
- SSF102: 10-32 x 0.4375" FLAT HEAD CAP SCREW
- SSB012: 6-32 x 0.250" BUTTON HEAD SCREW
- OU7004: 70 DURO URETHANE SIZE 4 O-RING
- OB7M03: 2.5mm x 1mm BUNA O - RING



SHOCKER 5.0 TRIGGER FRAME ASM

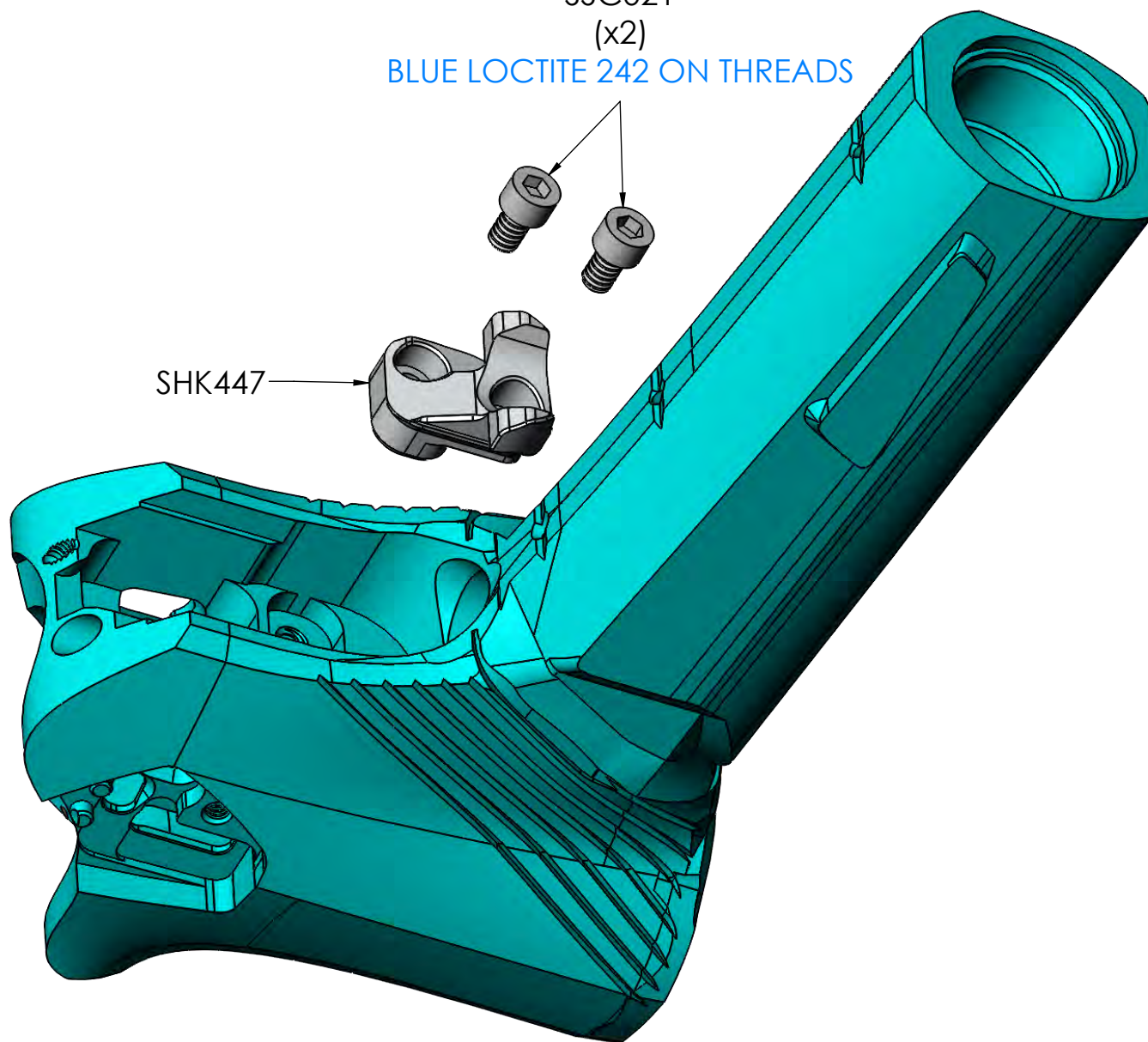
GOG PAINTBALL S.A.

THE INFORMATION CONTAINED IN THIS DRAWING IS THE SOLE PROPERTY OF GOG PAINTBALL S.A. ANY REPRODUCTION IN PART OR WHOLE WITHOUT THE WRITTEN PERMISSION OF GOG PAINTBALL S.A. IS PROHIBITED.

-SSCO21: 4-40 x 0.1875"

SSCO21
(x2)
BLUE LOCTITE 242 ON THREADS

SHK447



SHOCKER 5.0 TF RECEIVER ASM

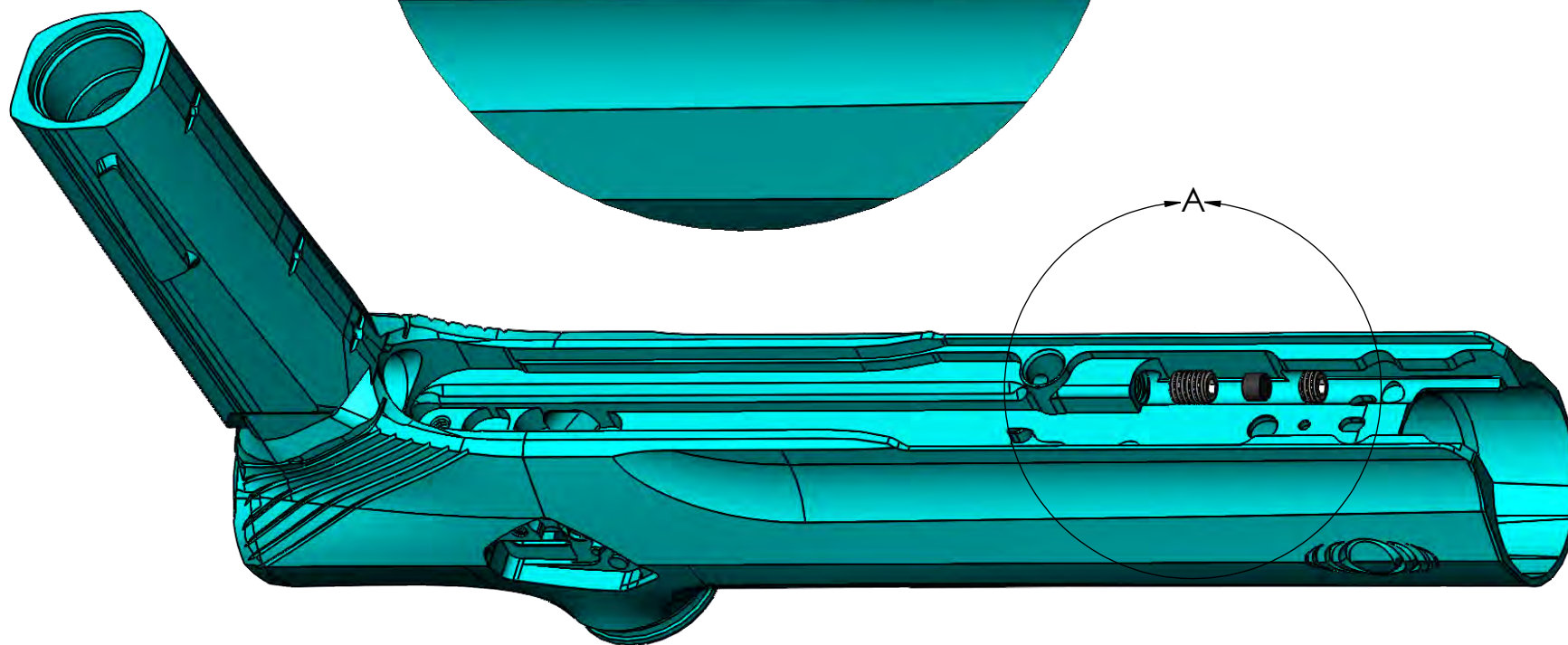
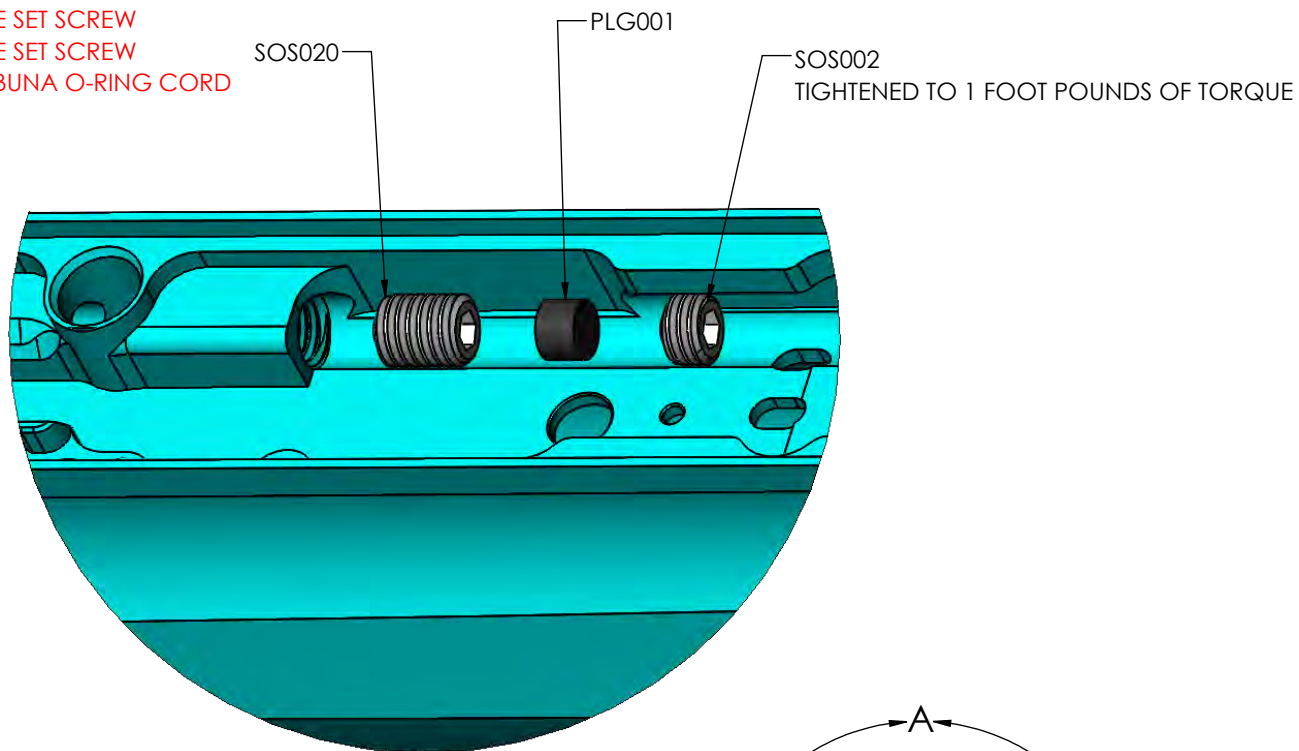
GOG PAINTBALL S.A.

THE INFORMATION CONTAINED IN THIS DRAWING IS THE SOLE PROPERTY OF GOG PAINTBALL S.A. ANY REPRODUCTION IN PART OR WHOLE WITHOUT THE WRITTEN PERMISSION OF GOG PAINTBALL S.A. IS PROHIBITED.

OB7M03 (x2) OB7M15 (x2) OB7MI4	OU7005 OB7M21 OM7010 (x2)	OM7014 (x2) OM7012 (x2) OM7015 (x2)	OM7008 OB9004 PLG001	OU7013 (x2) OU7016 (x2) OM7003 (x2)
OM9005 OM7006 OB9009	OM7019 (x2) OM7017 SSB012 (x2)	VRG106 OB7006 SSF102	PIN011 (x2) OB7M28 (x2) OB7M32 (x2)	OM7003 OB7M05 OU7004 (x2)
SHOCKER 5.0 SPARE PARTS KIT			GOG PAINTBALL S.A. <small>THE INFORMATION CONTAINED IN THIS DRAWING IS THE SOLE PROPERTY OF GOG PAINTBALL S.A. ANY REPRODUCTION IN PART OR WHOLE WITHOUT THE WRITTEN PERMISSION OF GOG PAINTBALL S.A. IS PROHIBITED.</small>	

- SOS002: 10-32 x .125" BLACK OXIDE SET SCREW
- SOS020: 10-32 x .250" BLACK OXIDE SET SCREW
- PLG001: Ø 4mm x .110" 70 DURO BUNA O-RING CORD

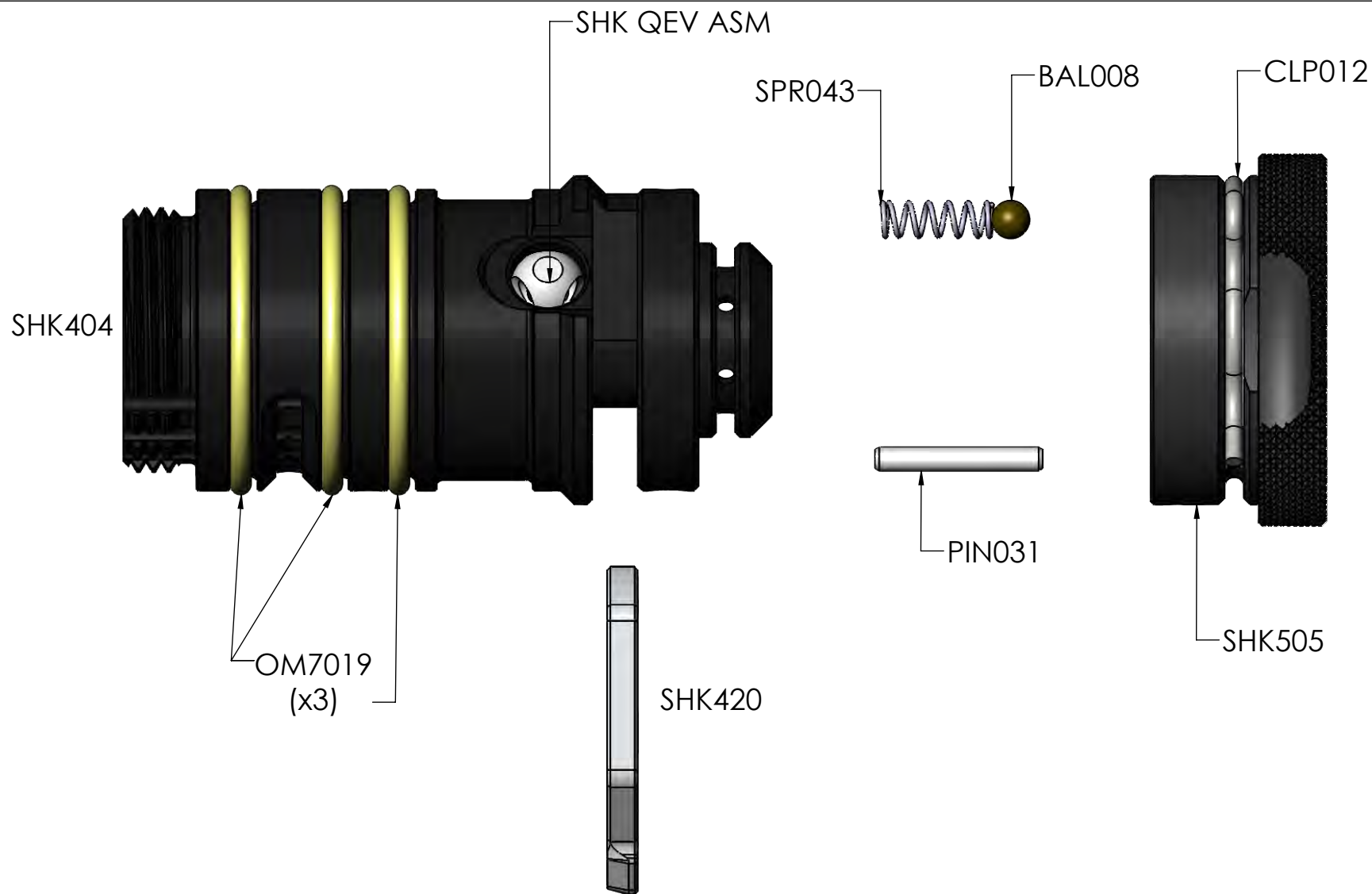
DETAIL A
SCALE 2 : 1



SHOCKER 5.0 BODY PLUG ASM

GOG PAINTBALL S.A.

THE INFORMATION CONTAINED IN THIS DRAWING IS THE SOLE PROPERTY OF GOG PAINTBALL S.A. ANY REPRODUCTION IN PART OR WHOLE WITHOUT THE WRITTEN PERMISSION OF GOG PAINTBALL S.A. IS PROHIBITED.

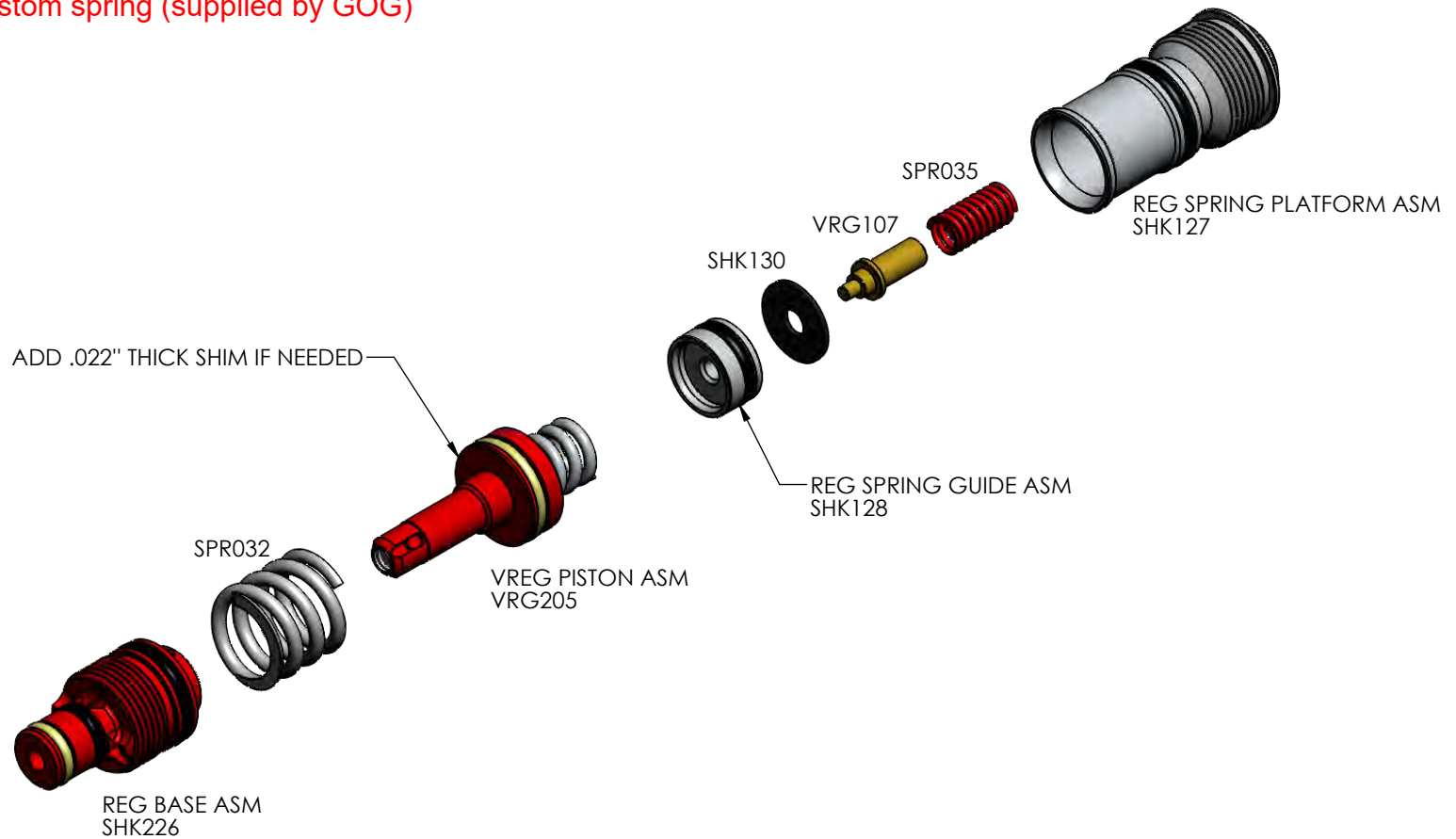


SHOCKER 5.0 FIRE CHAMBER ASM

GOG PAINTBALL S.A.

THE INFORMATION CONTAINED IN THIS DRAWING IS THE SOLE PROPERTY OF GOG PAINTBALL S.A. ANY REPRODUCTION IN PART OR WHOLE WITHOUT THE WRITTEN PERMISSION OF GOG PAINTBALL S.A. IS PROHIBITED.

SPR032 - custom spring (supplied by GOG)
SPR035 - custom spring (supplied by GOG)



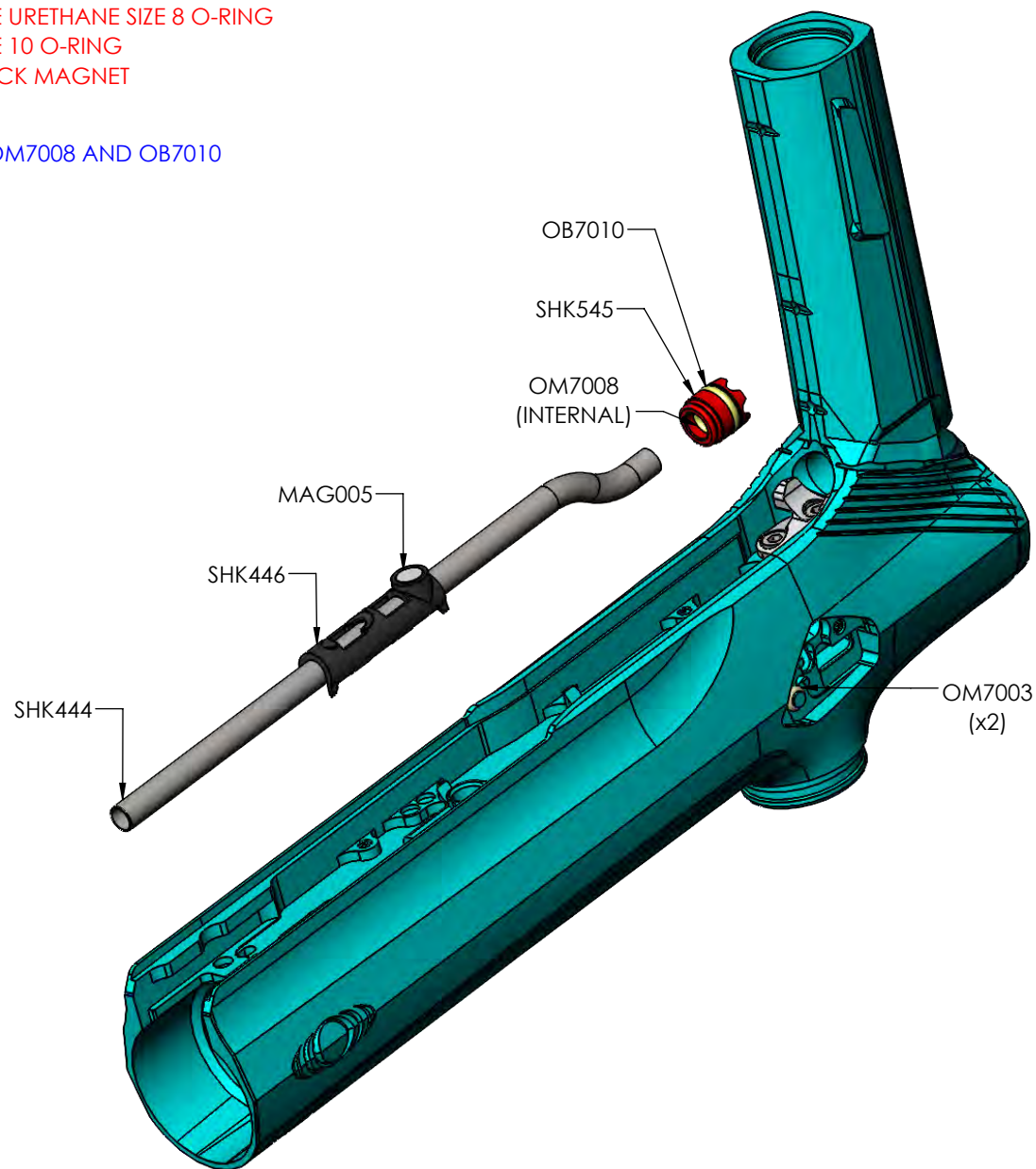
SHK 5.0 REG INTERNALS ASM GUIDE

GOG PAINTBALL S.A.

THE INFORMATION CONTAINED IN THIS DRAWING IS THE SOLE PROPERTY OF GOG PAINTBALL S.A. ANY REPRODUCTION IN PART OR WHOLE WITHOUT THE WRITTEN PERMISSION OF GOG PAINTBALL S.A. IS PROHIBITED.

- OM7003: 70 DURO MILLABLE URETHANE SIZE 3 O-RING
- OM7008: 70 DURO MILLABLE URETHANE SIZE 8 O-RING
- OB7010: 70 DURO BUNA SIZE 10 O-RING
- MAG005: $\varnothing .200$ " x .100" THICK MAGNET

APPLY DOW33 GREASE ON OM7008 AND OB7010



SHOCKER 5.0 TRANSFER TUBE ASM

GOG PAINTBALL S.A.

THE INFORMATION CONTAINED IN THIS DRAWING IS THE SOLE PROPERTY OF GOG PAINTBALL S.A. ANY REPRODUCTION IN PART OR WHOLE WITHOUT THE WRITTEN PERMISSION OF GOG PAINTBALL S.A. IS PROHIBITED.

SSC001 - 4-40 x .313 socket cap head stainless
OB9004 - AS004 buna 90 durometer



SHOCKER 5.0 CFN ASM GUIDE

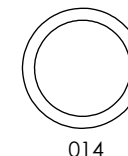
GOG PAINTBALL S.A.

THE INFORMATION CONTAINED IN THIS DRAWING IS THE SOLE PROPERTY OF GOG PAINTBALL S.A. ANY REPRODUCTION IN PART OR WHOLE WITHOUT THE WRITTEN PERMISSION OF GOG PAINTBALL S.A. IS PROHIBITED.

SCREW MUST THREAD INTO AT LEAST FLUSH WITH INSIDE SURFACE

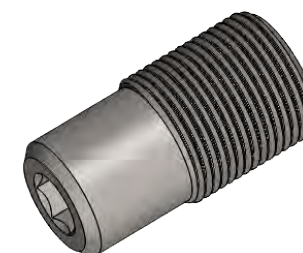


012



014

OM7012 - AS012 urethane 70 durometer
OB7014 - AS014 buna 70 durometer



SHK129

OB7014

OM7012
(ESTER MATERIAL)



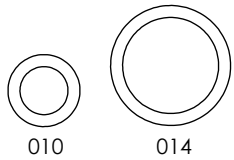
SHK127

PUSH TOOL INTO SHK127
THEN INSERT INSIDE ORING

SHK 5.0 REG SPRING BASE ASM

GOG PAINTBALL S.A.

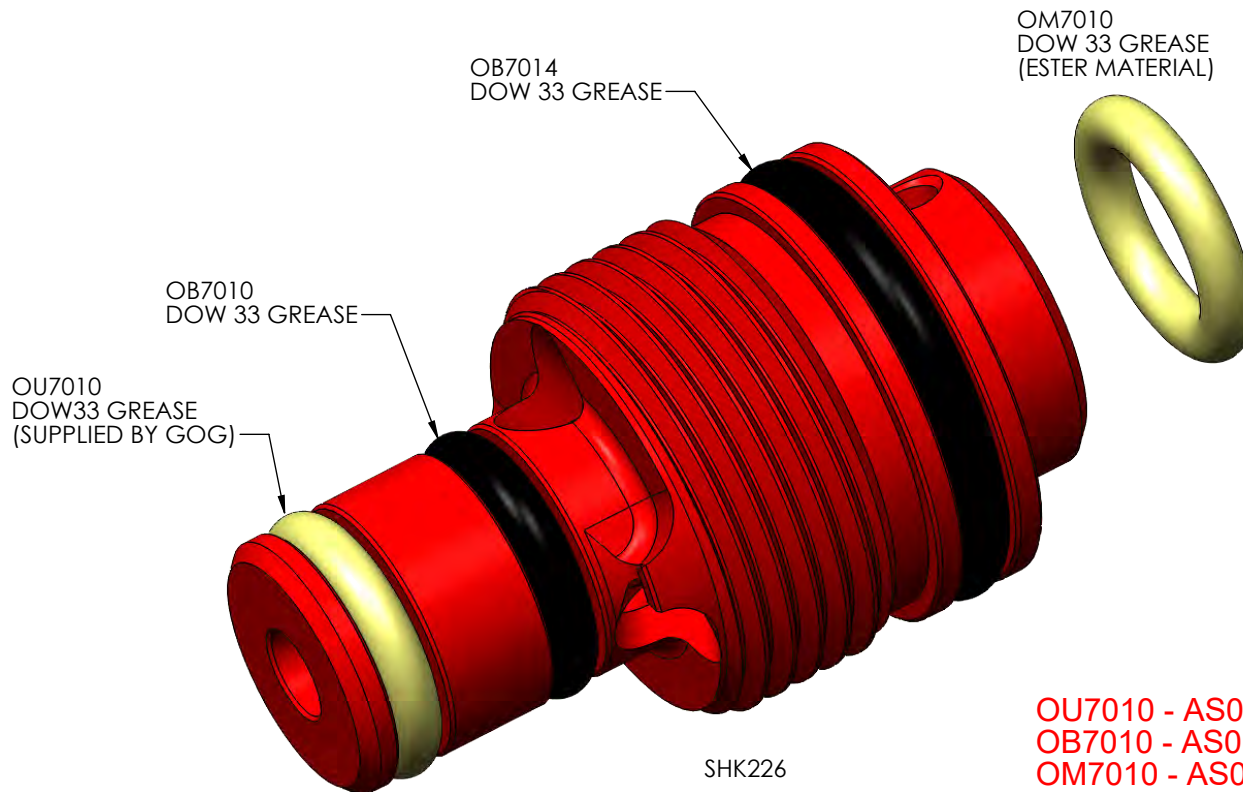
THE INFORMATION CONTAINED IN THIS DRAWING IS THE SOLE PROPERTY OF GOG PAINTBALL S.A. ANY REPRODUCTION IN PART OR WHOLE WITHOUT THE WRITTEN PERMISSION OF GOG PAINTBALL S.A. IS PROHIBITED.



USE ORING TOOL (FXT028) TO SLIDE
OB7010&OU7010 ONTO SHK126



USE ORING TOOL (FXT029) TO
SLIDE OB7014 ONTO SHK126

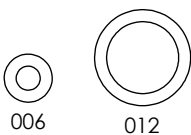


OU7010 - AS010 urethane 70 durometer (SUPPLIED BY GOG)
OB7010 - AS010 buna 70 durometer
OM7010 - AS010 urethane 70 dureometer
OB7014 - AS014 buna 70 durometer

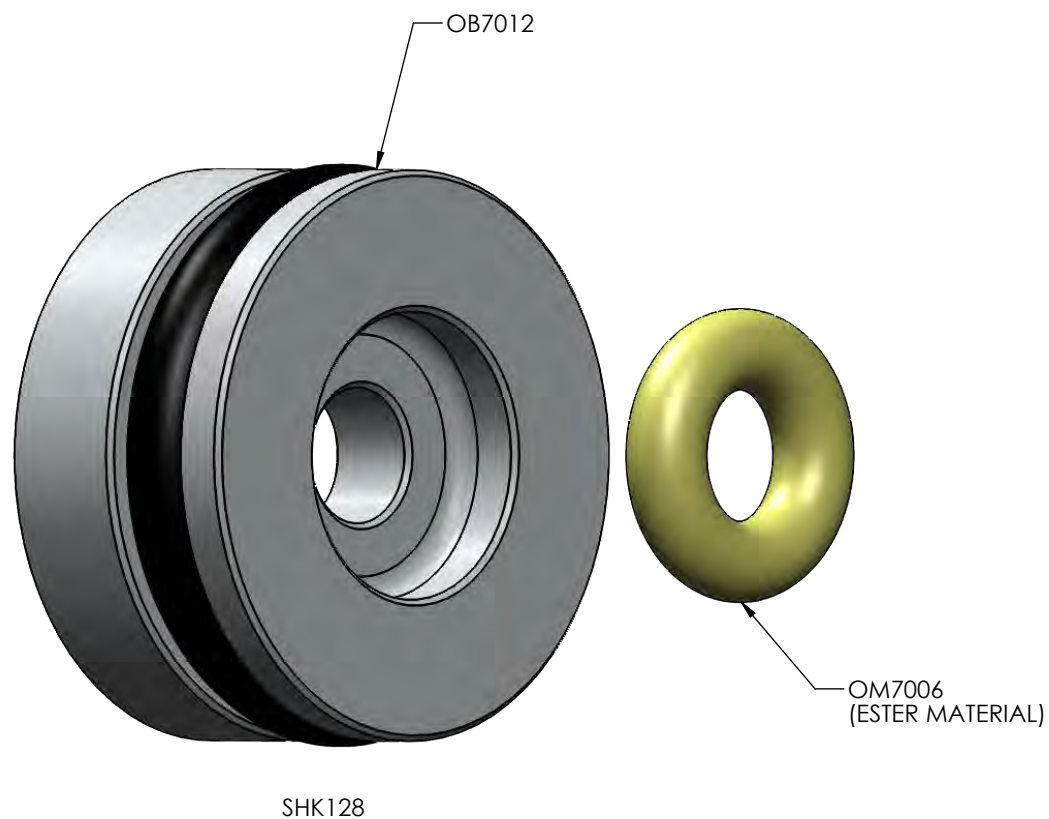
SHK 5.0 REG BASE ASM

GOG PAINTBALL S.A.

THE INFORMATION CONTAINED IN THIS DRAWING IS THE SOLE PROPERTY OF
GOG PAINTBALL S.A. ANY REPRODUCTION IN PART OR WHOLE WITHOUT THE
WRITTEN PERMISSION OF GOG PAINTBALL S.A. IS PROHIBITED.



OM7006 - AS006 urethane 70 durometer
OB7012 - AS012 buna 70 durometer

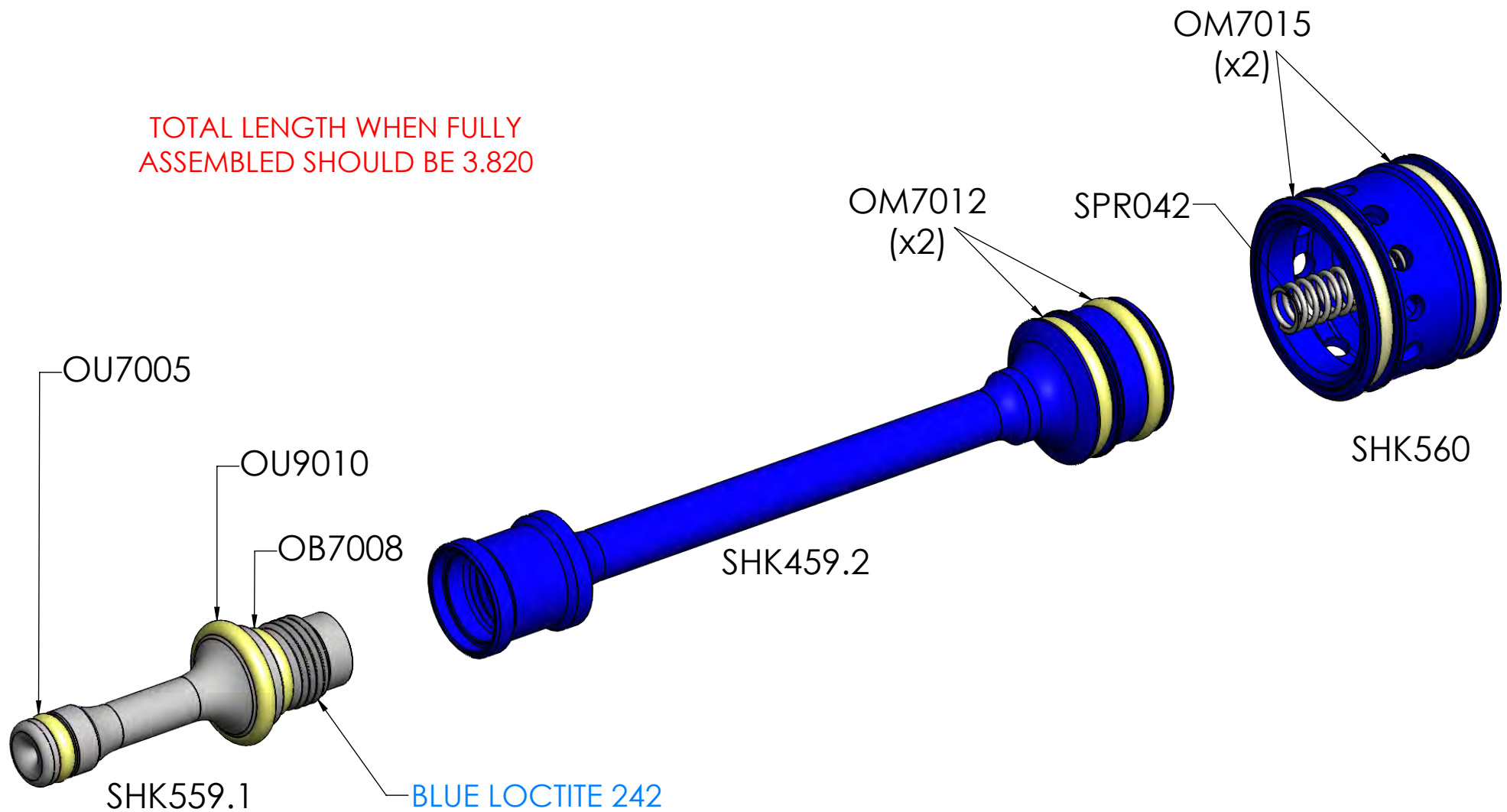


SHK 5.0 REG SPRING GUIDE ASM

GOG PAINTBALL S.A.

THE INFORMATION CONTAINED IN THIS DRAWING IS THE SOLE PROPERTY OF GOG PAINTBALL S.A. ANY REPRODUCTION IN PART OR WHOLE WITHOUT THE WRITTEN PERMISSION OF GOG PAINTBALL S.A. IS PROHIBITED.

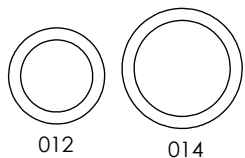
TOTAL LENGTH WHEN FULLY
ASSEMBLED SHOULD BE 3.820



SHOCKER 5.0 SPOOL ASM GUIDE

GOG PAINTBALL S.A.

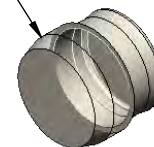
THE INFORMATION CONTAINED IN THIS DRAWING IS THE SOLE PROPERTY OF GOG PAINTBALL S.A. ANY REPRODUCTION IN PART OR WHOLE WITHOUT THE WRITTEN PERMISSION OF GOG PAINTBALL S.A. IS PROHIBITED.



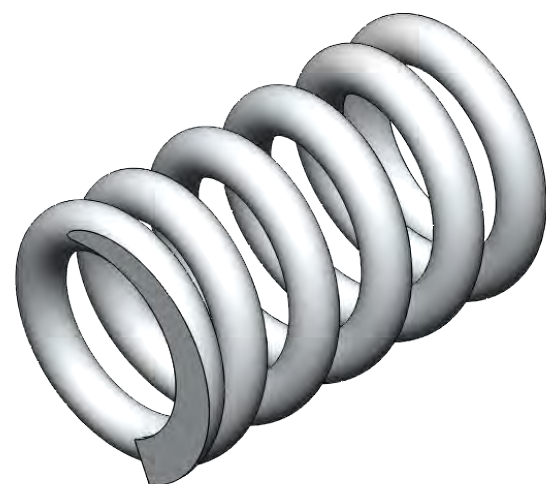
OM7014
DOW 33 GREASE
(ESTER MATERIAL)

VRG205

VRG106



INSTALL VRG106 INTO VRG205
ENSURE IT IS INSTALLED FLAT AND SITS
SLIGHTLY ABOVE THE TIP OF VRG105



SPR015
(FULLY INSERT SPRING INTO
BOTTOM OF VRG205)

OB7012

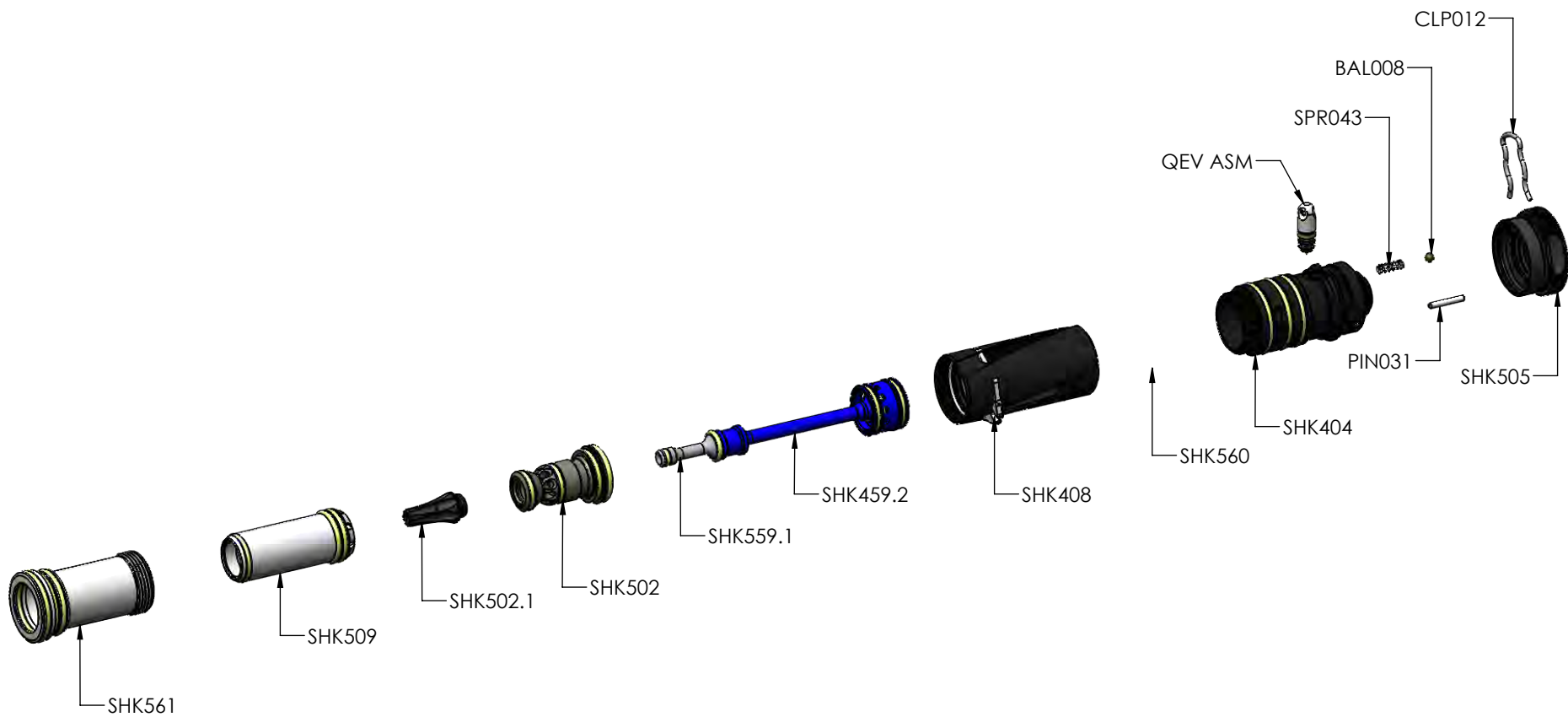
OM7014 - AS014 urethane 70 durometer
OB7012 - AS014 buna 70 durometer
SPR015 - custom spring (supplied by GOG)



SHK 5.0 V-REG PISTON ASM GUIDE

GOG PAINTBALL S.A.

THE INFORMATION CONTAINED IN THIS DRAWING IS THE SOLE PROPERTY OF
GOG PAINTBALL S.A. ANY REPRODUCTION IN PART OR WHOLE WITHOUT THE
WRITTEN PERMISSION OF GOG PAINTBALL S.A. IS PROHIBITED.



GOG PAINTBALL S.A.

THE INFORMATION CONTAINED IN THIS DRAWING IS THE SOLE PROPERTY OF GOG PAINTBALL S.A. ANY REPRODUCTION IN PART OR WHOLE WITHOUT THE WRITTEN PERMISSION OF GOG PAINTBALL S.A. IS PROHIBITED.

2

1

FLT009- ϕ .235" x .010" THICK
OU7004- 70 DURO URETHANE SIZE 4 O-RING
SSC010- #6-40 x .3125" SHOULDER HEAD CAP SCREW
OB9009- 90 DURO BUNA SIZE 9 O-RING
OU9005- 90 DURO URETHANE SIZE 5 O-RING

BOTTOM OF SHK506

SSC010
(x2)

BLUE LOCTITE 242

FLT009

SHK564

OU7004
(x2)

SHK536

SHK537

SHK538

OB9009

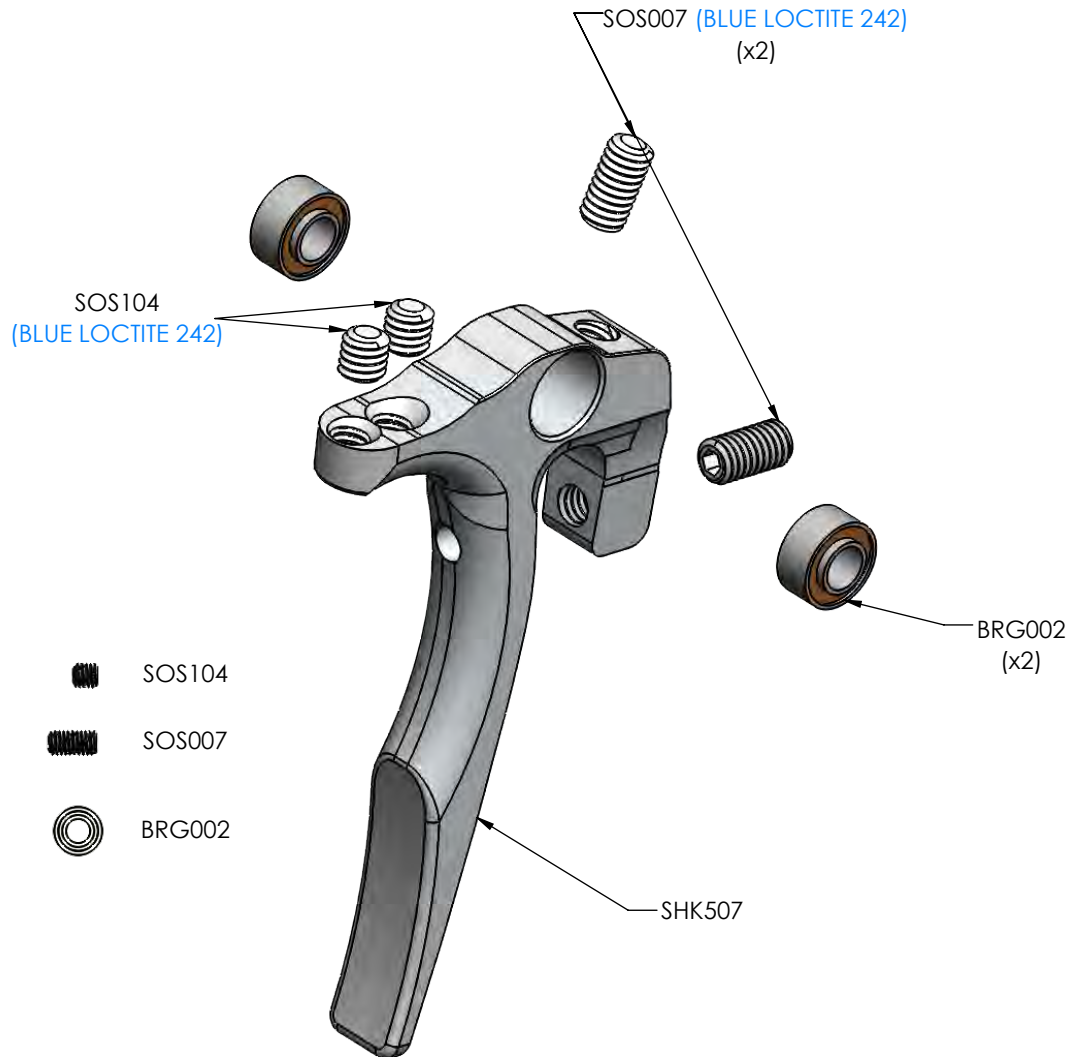
OU9005
DOW33 GREASE
(SUPPLIED BY GOG)

SHOCKER 5.0 ASA ASM

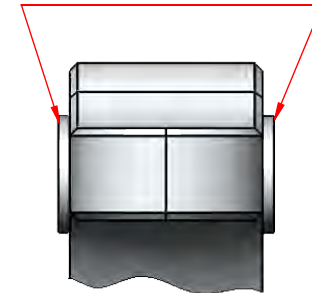
2

1

SOS104 - 5-44 x 1/8 socket set screw black oxide
 SOS007 - 5-44 x 1/4 socket set screw black oxide
 BRG002 - 1/4 diameter x .109" wide (.140" inner race)
 stainless roller bearing ABEC 3



ONLY INNER RACE
 OF BEARING
 SHOULD BE VISABLE



SHOCKER 5.0 TRIGGER ASM GUIDE

GOG PAINTBALL S.A.

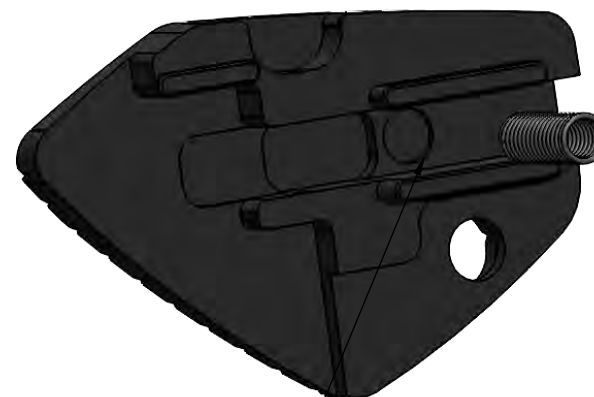
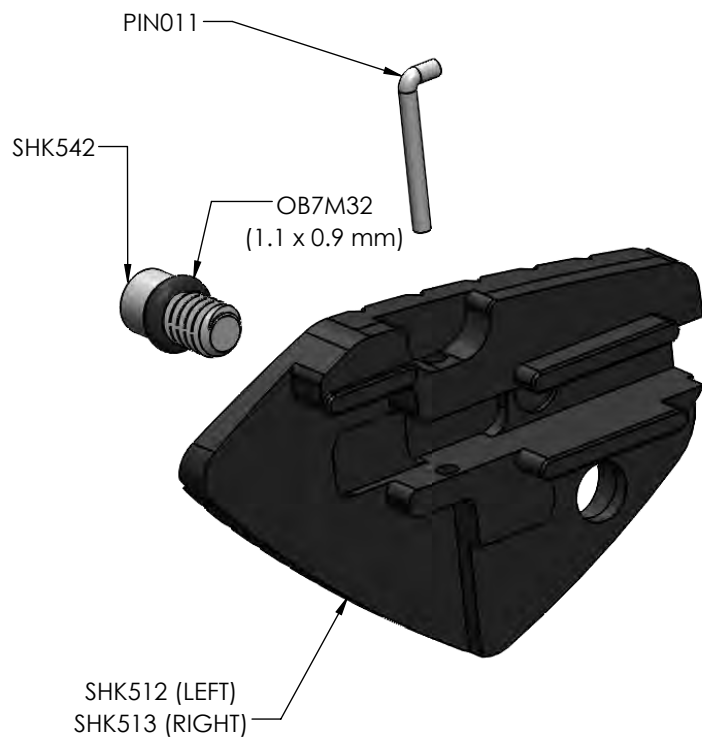
THE INFORMATION CONTAINED IN THIS DRAWING IS THE SOLE PROPERTY OF GOG PAINTBALL S.A. ANY REPRODUCTION IN PART OR WHOLE WITHOUT THE WRITTEN PERMISSION OF GOG PAINTBALL S.A. IS PROHIBITED.

⊙ 1.1 mm x 0.9 mm

SHK542

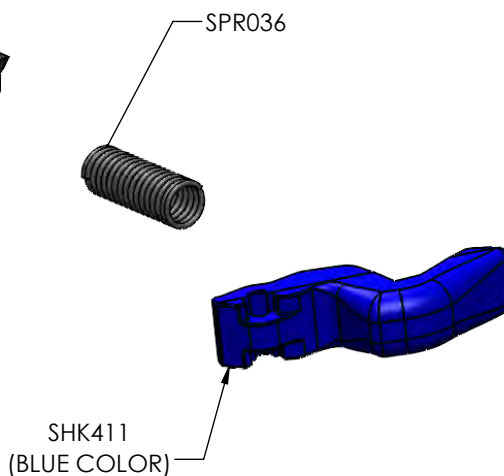
PIN011

SPR036



SPRING MUST BE INSERTED INTO HOLE IN
VISION COVER WHEN ASSEMBLED

PIN011 - Custom pin supplied by GOG
SPR036 - Custom spring supplied by GOG
OB7M32 - 1.1mm x 0.9mm buna 70 durometer



SHK 5.0 VSN COVER ASM GUIDE

GOG PAINTBALL S.A.

THE INFORMATION CONTAINED IN THIS DRAWING IS THE SOLE PROPERTY OF
GOG PAINTBALL S.A. ANY REPRODUCTION IN PART OR WHOLE WITHOUT THE
WRITTEN PERMISSION OF GOG PAINTBALL S.A. IS PROHIBITED.