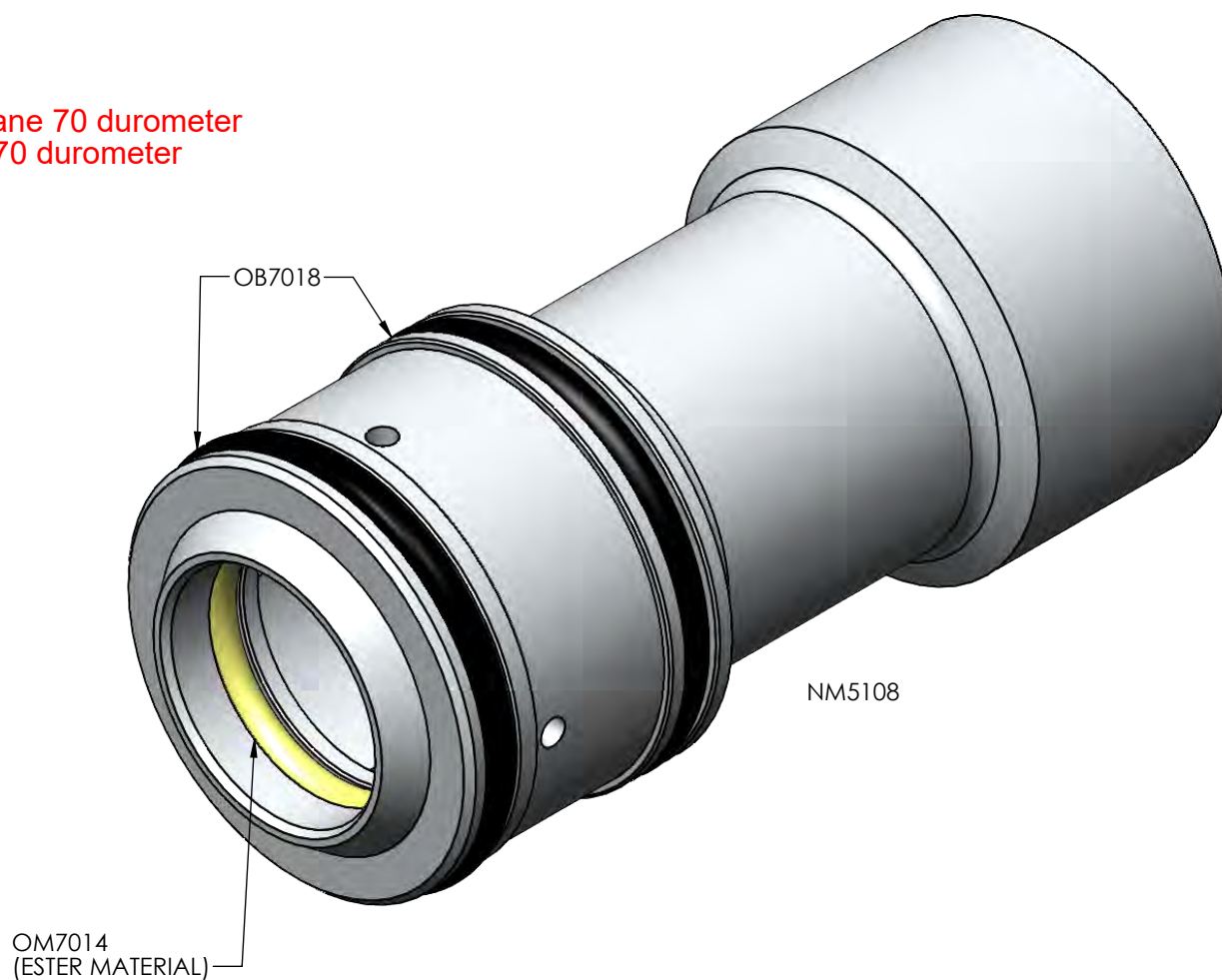


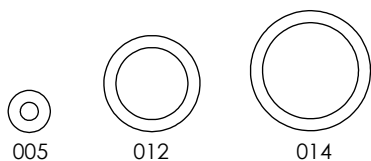
OM7014 - AS014 urethane 70 durometer
OB7018 - AS018 buna 70 durometer



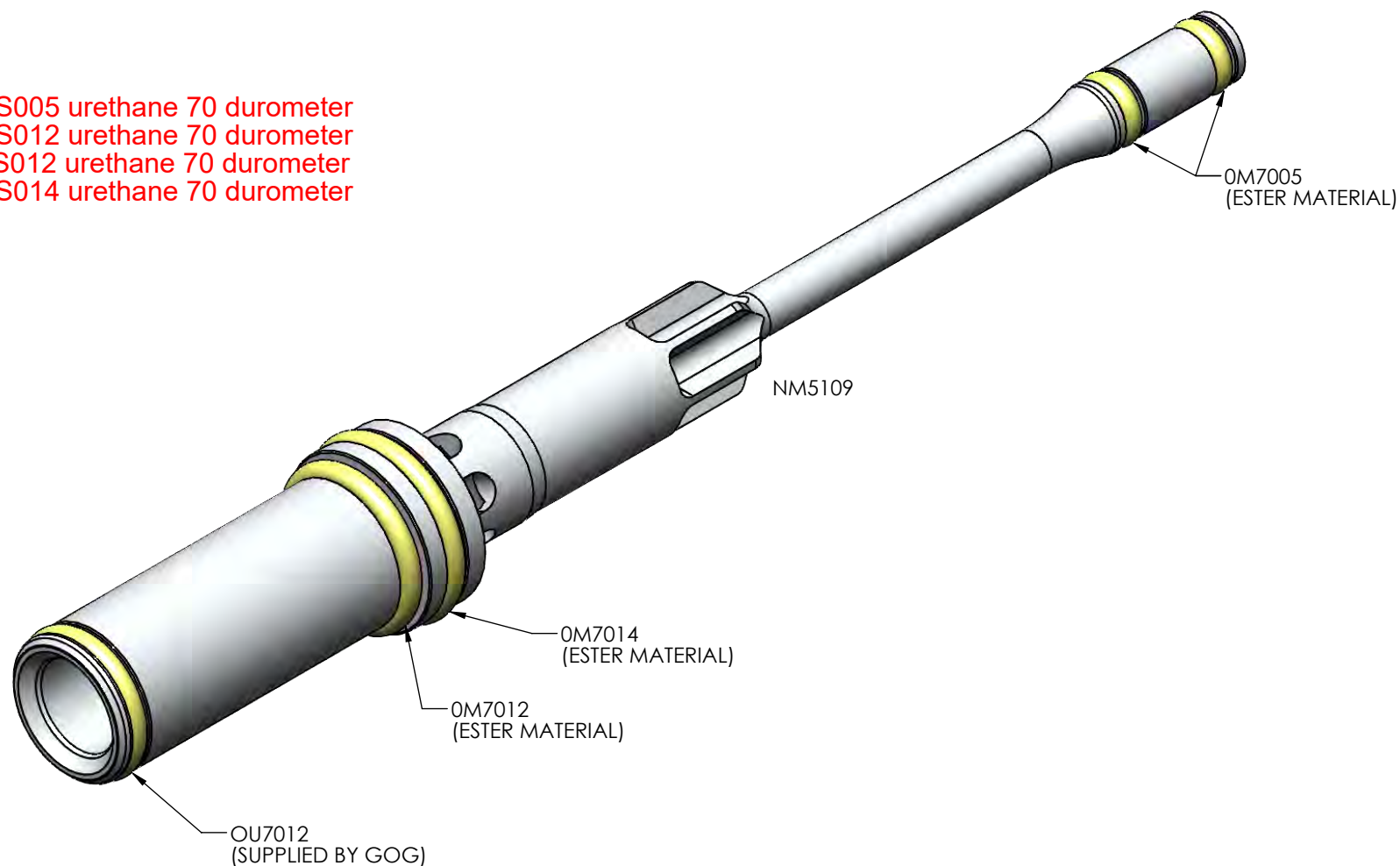
ENMEY 50 CORE CAP ASM GUIDE

GOG PAINTBALL S.A.

THE INFORMATION CONTAINED IN THIS DRAWING IS THE SOLE PROPERTY OF GOG PAINTBALL S.A. ANY REPRODUCTION IN PART OR WHOLE WITHOUT THE WRITTEN PERMISSION OF GOG PAINTBALL S.A. IS PROHIBITED.



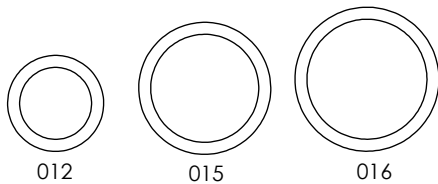
OM7005 - AS005 urethane 70 durometer
OM7012 - AS012 urethane 70 durometer
OU7012 - AS012 urethane 70 durometer
OM7014 - AS014 urethane 70 durometer



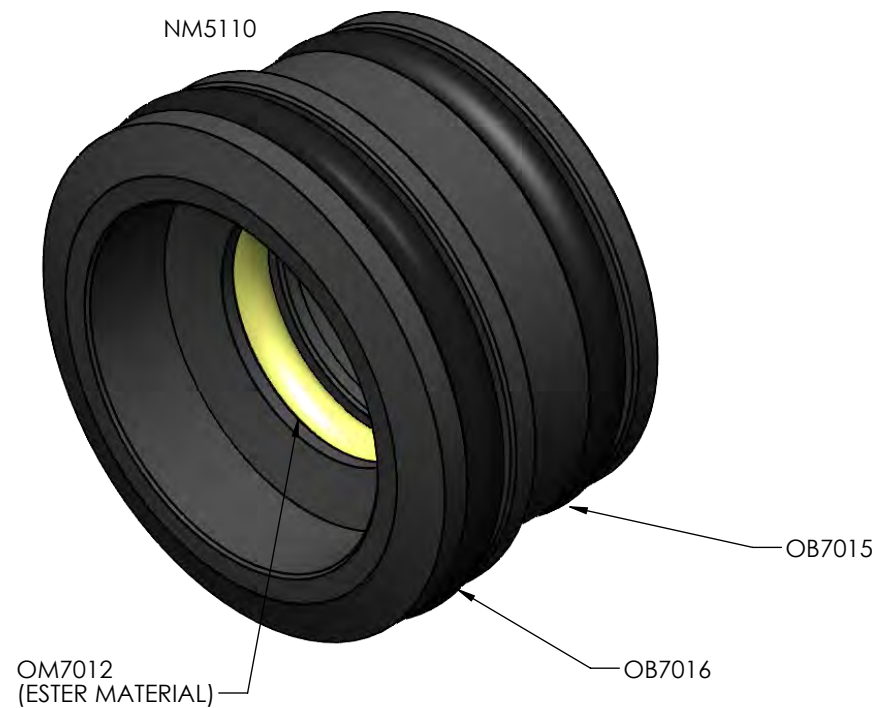
ENMEY 50 BOLT ASM GUIDE

GOG PAINTBALL S.A.

THE INFORMATION CONTAINED IN THIS DRAWING IS THE SOLE PROPERTY OF GOG PAINTBALL S.A. ANY REPRODUCTION IN PART OR WHOLE WITHOUT THE WRITTEN PERMISSION OF GOG PAINTBALL S.A. IS PROHIBITED.



OM7012 - AS012 urethane 70 durometer
OB7015 - AS015 buna 70 durometer
OB7016 - AS016 buna 70 durometer

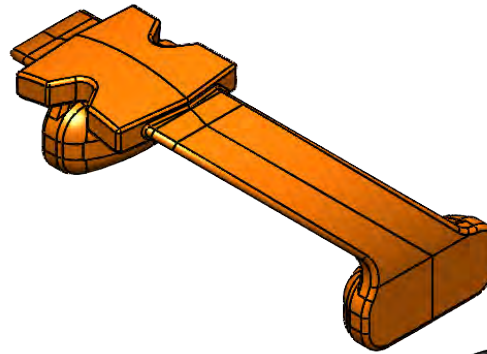


ENMEY 50 BOLT STOP ASM GUIDE

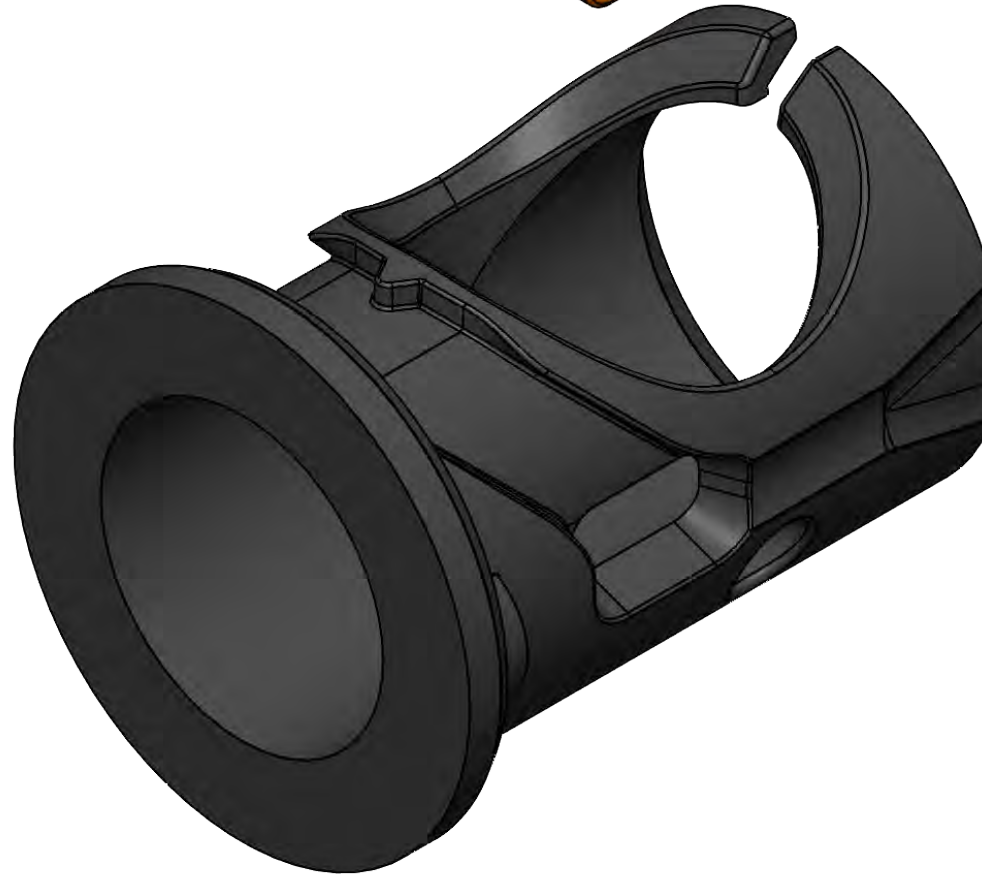
GOG PAINTBALL S.A.

THE INFORMATION CONTAINED IN THIS DRAWING IS THE SOLE PROPERTY OF GOG PAINTBALL S.A. ANY REPRODUCTION IN PART OR WHOLE WITHOUT THE WRITTEN PERMISSION OF GOG PAINTBALL S.A. IS PROHIBITED.

NM5111



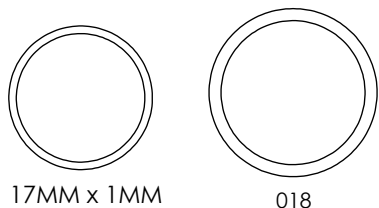
NM5112



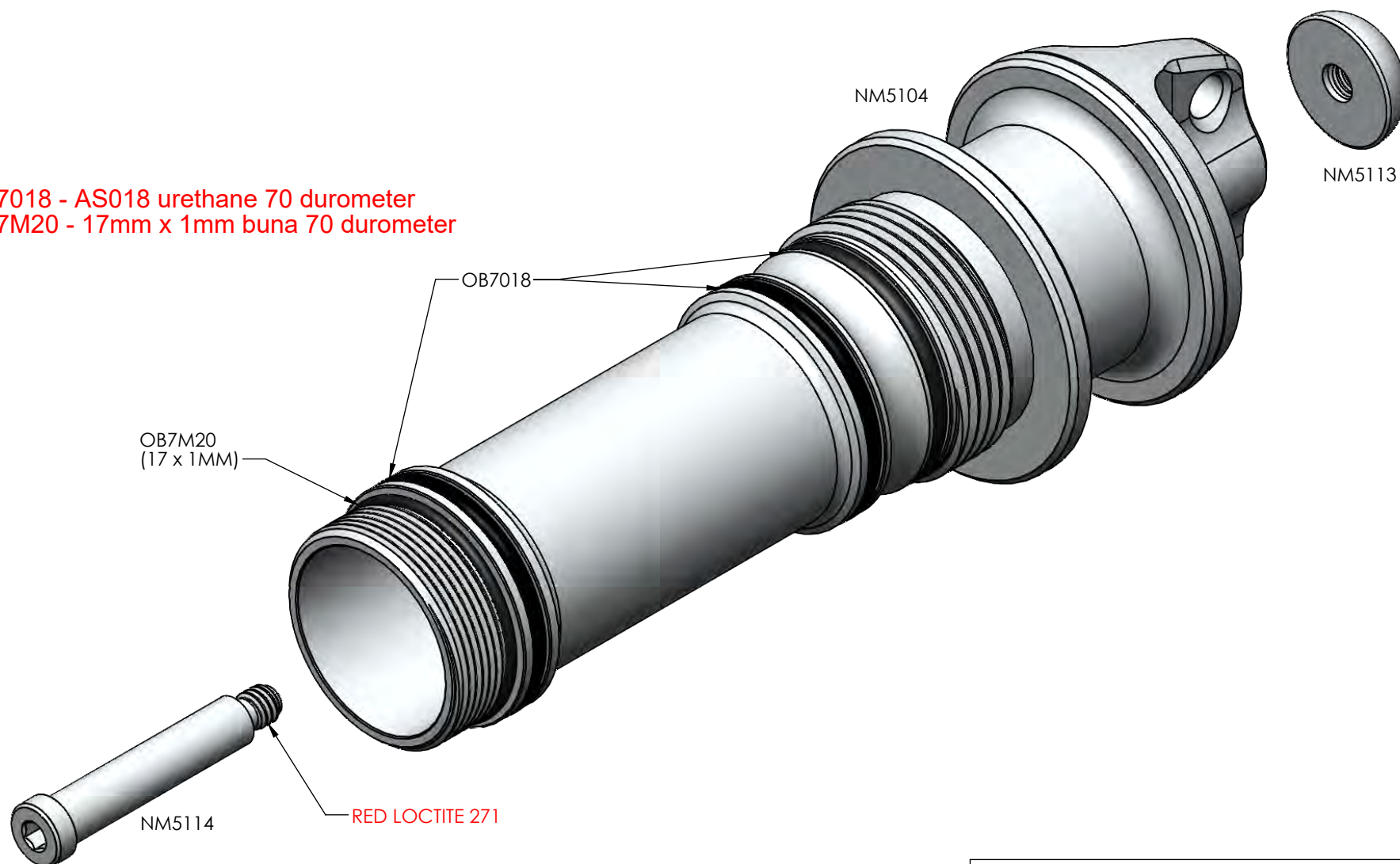
ENEMY 50 BREECH INSRT ASM GUIDE

GOG PAINTBALL S.A.

THE INFORMATION CONTAINED IN THIS DRAWING IS THE SOLE PROPERTY OF GOG PAINTBALL S.A. ANY REPRODUCTION IN PART OR WHOLE WITHOUT THE WRITTEN PERMISSION OF GOG PAINTBALL S.A. IS PROHIBITED.



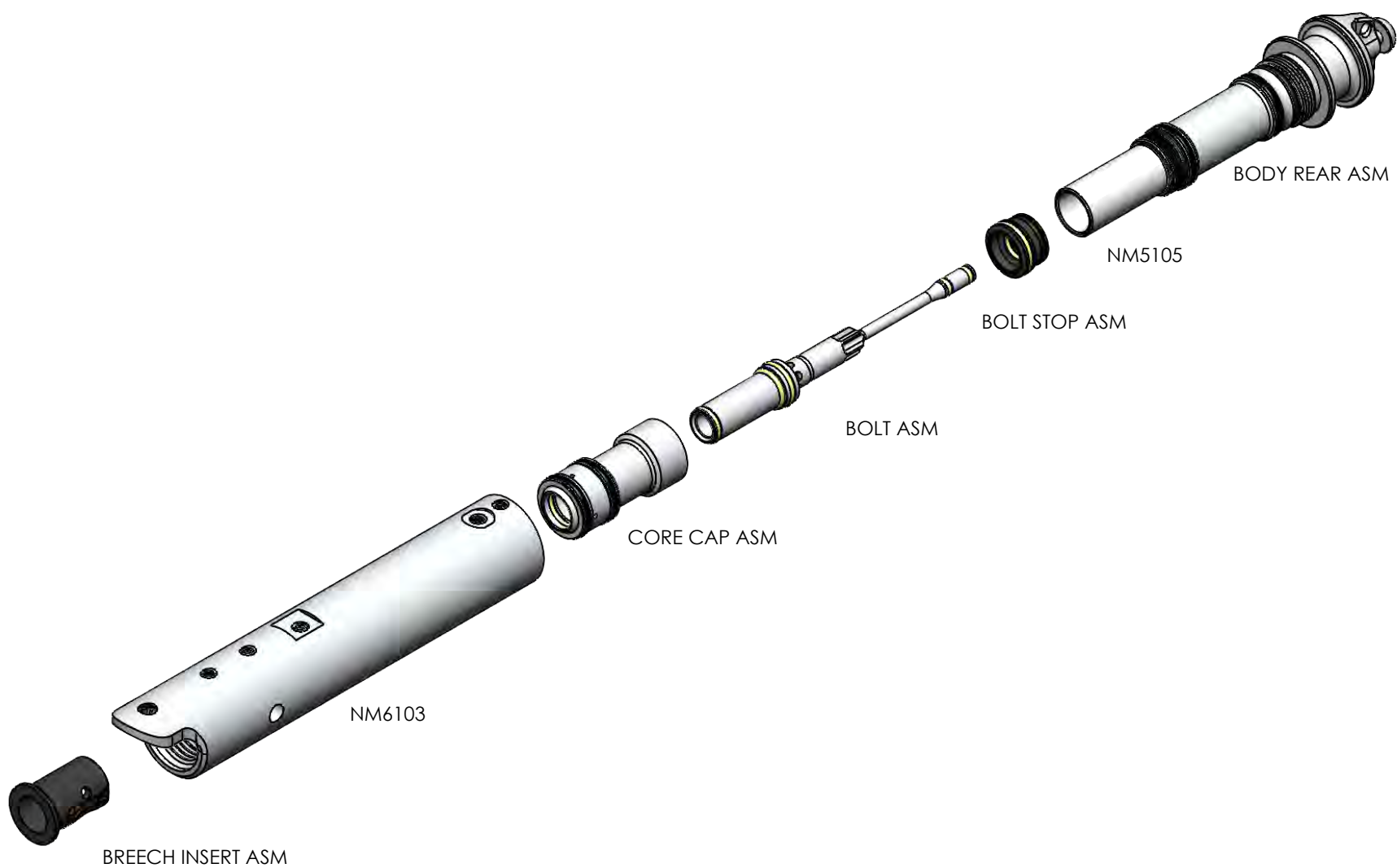
OB7018 - AS018 urethane 70 durometer
OB7M20 - 17mm x 1mm buna 70 durometer



ENMEY 50 BODY REAR ASM GUIDE

GOG PAINTBALL S.A.

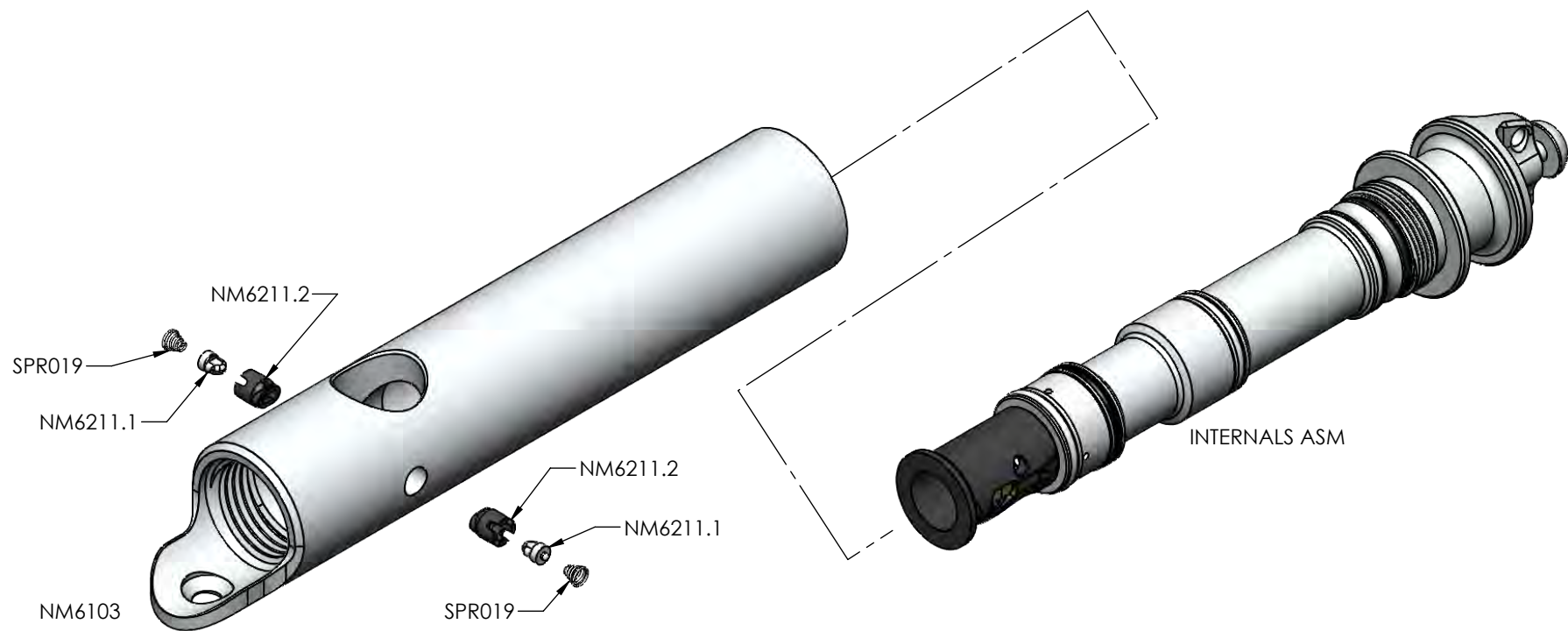
THE INFORMATION CONTAINED IN THIS DRAWING IS THE SOLE PROPERTY OF GOG PAINTBALL S.A. ANY REPRODUCTION IN PART OR WHOLE WITHOUT THE WRITTEN PERMISSION OF GOG PAINTBALL S.A. IS PROHIBITED.



ENMEY 50 INTERNALS ASM GUIDE

GOG PAINTBALL S.A.

THE INFORMATION CONTAINED IN THIS DRAWING IS THE SOLE PROPERTY OF GOG PAINTBALL S.A. ANY REPRODUCTION IN PART OR WHOLE WITHOUT THE WRITTEN PERMISSION OF GOG PAINTBALL S.A. IS PROHIBITED.



ENSURE SPR019 IS FULLY INSERTED INTO NM6211.2
AND REMAINS IN PLACE ON ALL FOUR TABS

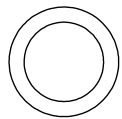


SPR019 - Custom spring supplied by GOG

ENMEY 50 BODY FRONT ASM GUIDE

GOG PAINTBALL S.A.

THE INFORMATION CONTAINED IN THIS DRAWING IS THE SOLE PROPERTY OF GOG PAINTBALL S.A. ANY REPRODUCTION IN PART OR WHOLE WITHOUT THE WRITTEN PERMISSION OF GOG PAINTBALL S.A. IS PROHIBITED.



10.5MM x 2MM



SOB002

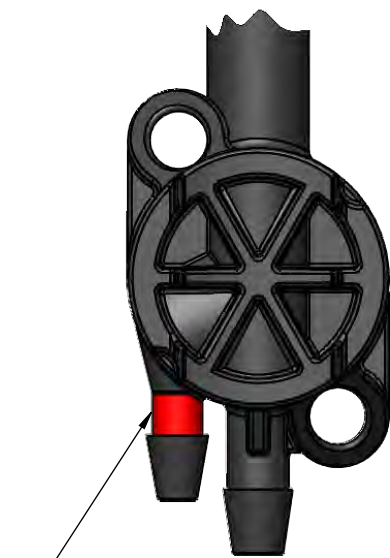
OB7M16 - 10.5mm x 2mm buna 70 durometer
SOB002 - M3 x 3mm button head black oxide



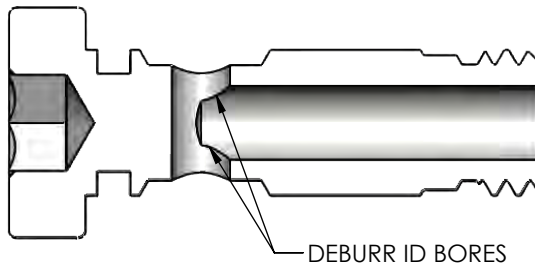
ENMEY 50 VALVE ASM GUIDE

GOG PAINTBALL S.A.

THE INFORMATION CONTAINED IN THIS DRAWING IS THE SOLE PROPERTY OF GOG PAINTBALL S.A. ANY REPRODUCTION IN PART OR WHOLE WITHOUT THE WRITTEN PERMISSION OF GOG PAINTBALL S.A. IS PROHIBITED.



APPLY LOCTITE 411 INSTANT ADHESIVE TO THIS BARB SURFACE BEFORE ASSEMBLY

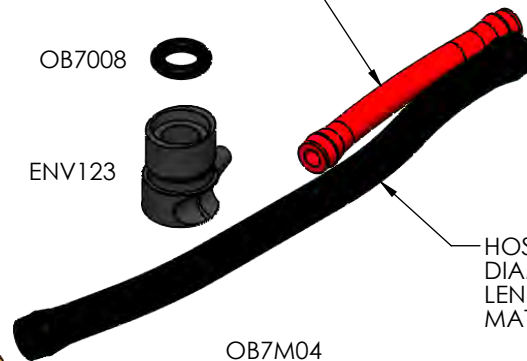


DEBURR ID BORES

HOS###
DIAMETER: 4 x 2.5 MM
LENGTH: 1.590" TO 1.620"
MATERIAL: SEMI RIGID NYLON 12
COLOR: RED

OB7008

ENV123



HOS006
DIAMETER: 5 x 3 MM
LENGTH: 3.710" TO 3.740"
MATERIAL: NYLON 12

OB7M04
(3 x 1MM)

ENV122

OB7M05
(4 x 1MM)

NME121
RED LOCTITE

ENV113

OB7008

NME202

OB7M04
(3 x 1MM)

ENV122

OB7M05 - 4mm x 1mm buna 70 durometer
OB7M04 - 3mm x 1mm buna 70 durometer
OB7008 - AS008 buna 70 durometer



ENMEY 50 VALVE HOSES ASM GUIDE

GOG PAINTBALL S.A.

THE INFORMATION CONTAINED IN THIS DRAWING IS THE SOLE PROPERTY OF GOG PAINTBALL S.A. ANY REPRODUCTION IN PART OR WHOLE WITHOUT THE WRITTEN PERMISSION OF GOG PAINTBALL S.A. IS PROHIBITED.

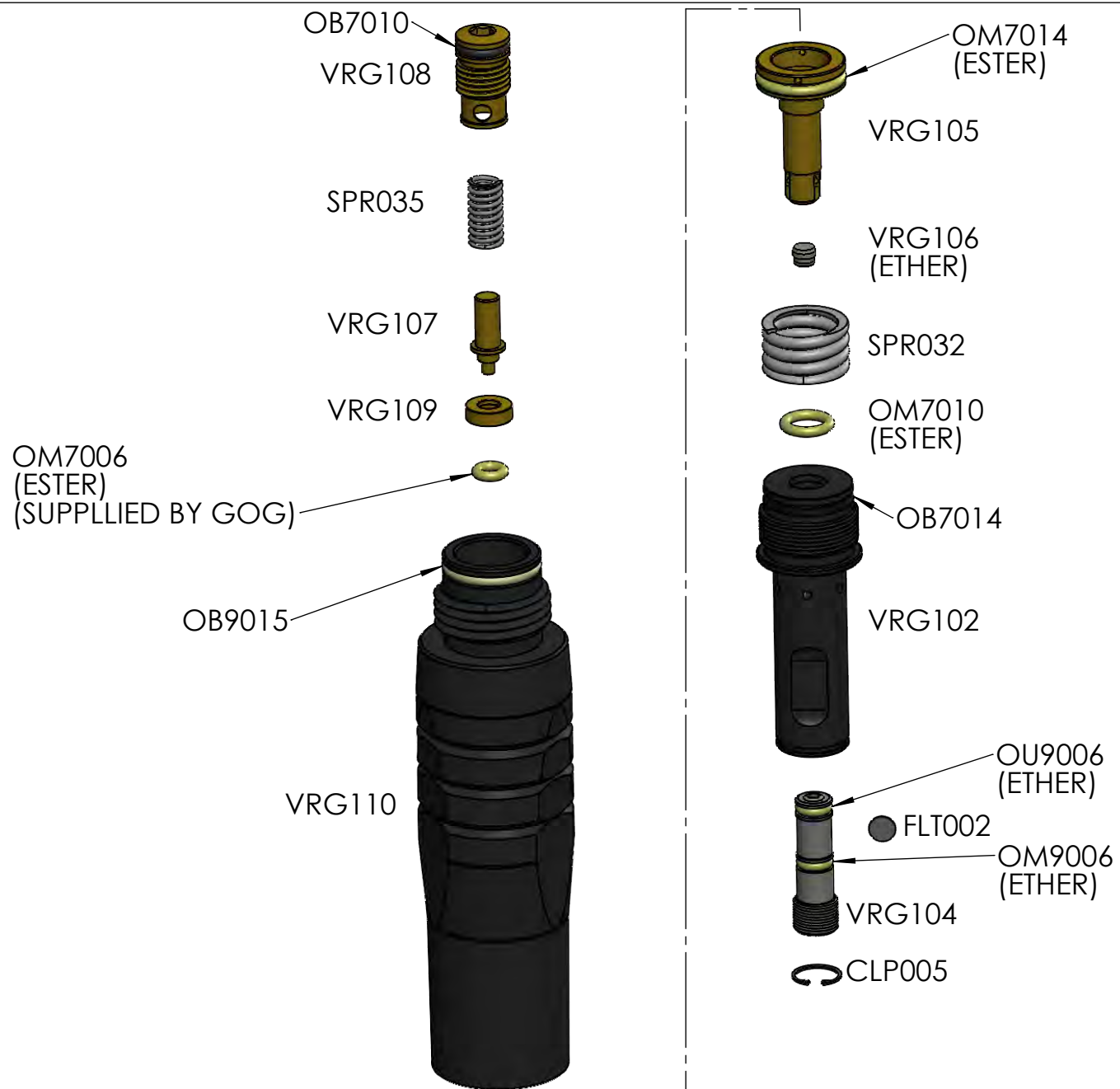


OM7006 - AS006 urethane 70 durometer
SSC007 - 6-32 x 1/2" cap head stainless
WSH003 - #6 Split lock washer
NUT003 - 6-32 x .109" (5/16" HEX)

ENMEY 50 RENTAL CFN ASM GUIDE

GOG PAINTBALL S.A.

THE INFORMATION CONTAINED IN THIS DRAWING IS THE SOLE PROPERTY OF GOG PAINTBALL S.A. ANY REPRODUCTION IN PART OR WHOLE WITHOUT THE WRITTEN PERMISSION OF GOG PAINTBALL S.A. IS PROHIBITED.



ENMEY 50 RENTAL REG ASM GUIDE

GOG PAINTBALL S.A.

THE INFORMATION CONTAINED IN THIS DRAWING IS THE SOLE PROPERTY OF GOG PAINTBALL S.A. ANY REPRODUCTION IN PART OR WHOLE WITHOUT THE WRITTEN PERMISSION OF GOG PAINTBALL S.A. IS PROHIBITED.



SSF004

SSF006 - #10-32 x 1/4" Flat Head Stainless



SSF004



ENV112



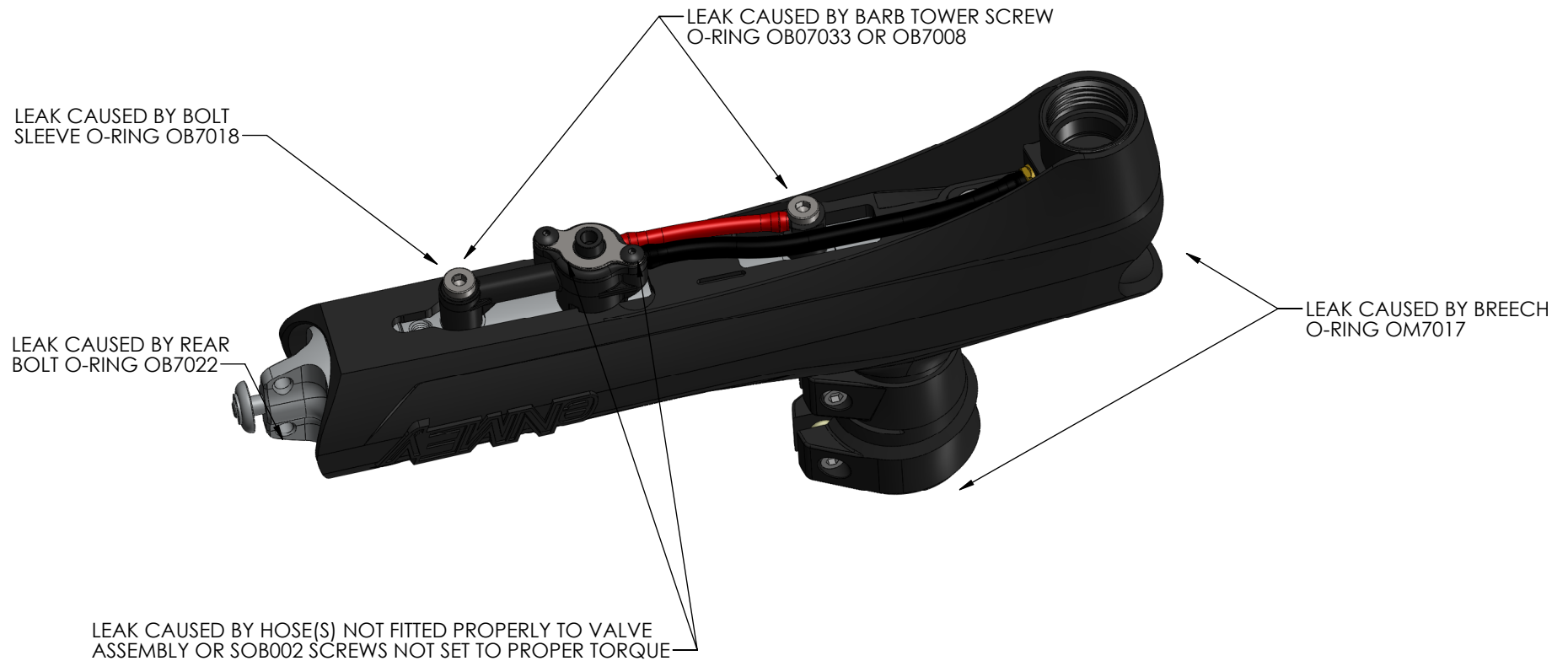
SSF004

ENMEY 50 w/ VALVE ASM GUIDE

GOG PAINTBALL S.A.

THE INFORMATION CONTAINED IN THIS DRAWING IS THE SOLE PROPERTY OF GOG PAINTBALL S.A. ANY REPRODUCTION IN PART OR WHOLE WITHOUT THE WRITTEN PERMISSION OF GOG PAINTBALL S.A. IS PROHIBITED.

PRESSURIZE BODY AND LISTEN FOR LEAKS



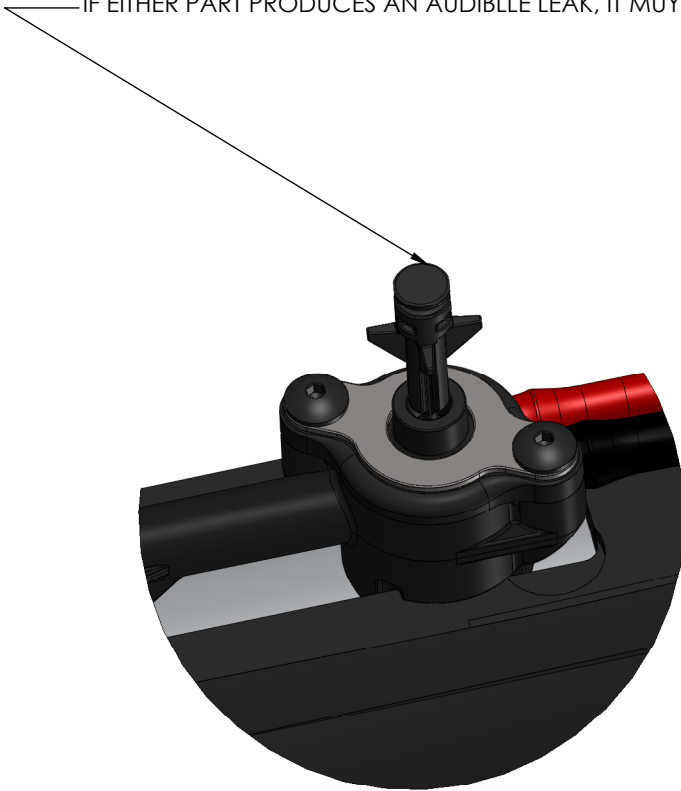
ENMEY 50 RENTAL BODY LEAK TEST

GOG PAINTBALL S.A.

THE INFORMATION CONTAINED IN THIS DRAWING IS THE SOLE PROPERTY OF GOG PAINTBALL S.A. ANY REPRODUCTION IN PART OR WHOLE WITHOUT THE WRITTEN PERMISSION OF GOG PAINTBALL S.A. IS PROHIBITED.

BODY ASSEMBLY MUST BE MANUALLY FIRED DURING PRESSURE TEST

USE ACTUATOR (NME204) TO OPEN 3 WAY VALVE AND CYCLE BOLT.
DO NOT USE SHARP OR METAL TOOLS. THEY WILL DAMAGE VALVE.
HOLD ARMATURE FULLY OPEN IN FIRING POSITION FOR 2 SECONDS
TO BE SURE THAT BOLT TAIL AND MK02102 VALVE UPPER ARE SEALING.
IF EITHER PART PRODUCES AN AUDIBLE LEAK, IT MUST BE REPLACED



WATER LEAK TEST:
MUST PRODUCE LESS THAN 1
BUBBLE IN 5 SECONDS ON
EXHAUST PORT (CENTER HOLE)



ENMEY 50 RENTAL PRESSURE TESTS

GOG PAINTBALL S.A.

THE INFORMATION CONTAINED IN THIS DRAWING IS THE SOLE PROPERTY OF
GOG PAINTBALL S.A. ANY REPRODUCTION IN PART OR WHOLE WITHOUT THE
WRITTEN PERMISSION OF GOG PAINTBALL S.A. IS PROHIBITED.



NUT002



4MM x 1MM



SPR007



BAL001

BAL001



SPR007



NME106

NUT002

NME108



ENMEY SAFETY O-RING
(4 x 1MM)(RED SILICONE)

NUT002

NUT002 - Custom Nut Supplied by GOG
SPR007 - Custom Spring Supplied by GOG
BAL001 - 2MM Stainless Steel Ball Bearing

ENMEY 50 SAFETY ASM GUIDE

GOG PAINTBALL S.A.

THE INFORMATION CONTAINED IN THIS DRAWING IS THE SOLE PROPERTY OF GOG PAINTBALL S.A. ANY REPRODUCTION IN PART OR WHOLE WITHOUT THE WRITTEN PERMISSION OF GOG PAINTBALL S.A. IS PROHIBITED.

3MM x 1MM

10.5MM x 2MM

OB7M16
(10.5 x 2MM)

NME204

(SUBSTITUTE TO
NME304 WHEN
USED WITH NME057
HE VALVE)

OB7M04 - 3mm x 1mm buna 70 durometer
OB7M16 - 10.5mm x 2mm buna 70 durometer

NME106

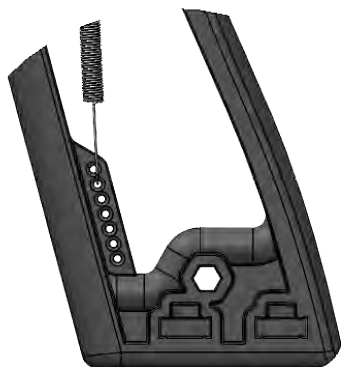
OB7M04
(3 x 1MM)

WSH004

ENMEY 50 TRGGR FRAME ASM GUIDE

GOG PAINTBALL S.A.

THE INFORMATION CONTAINED IN THIS DRAWING IS THE SOLE PROPERTY OF
GOG PAINTBALL S.A. ANY REPRODUCTION IN PART OR WHOLE WITHOUT THE
WRITTEN PERMISSION OF GOG PAINTBALL S.A. IS PROHIBITED.



ATTACH SPRING TO SECOND HOLE FROM TOP OF TRIGGER FRAME

SPR008 - Custom Spring Supplied By GOG
PIN018 - Custom Pin Supplied By GOG

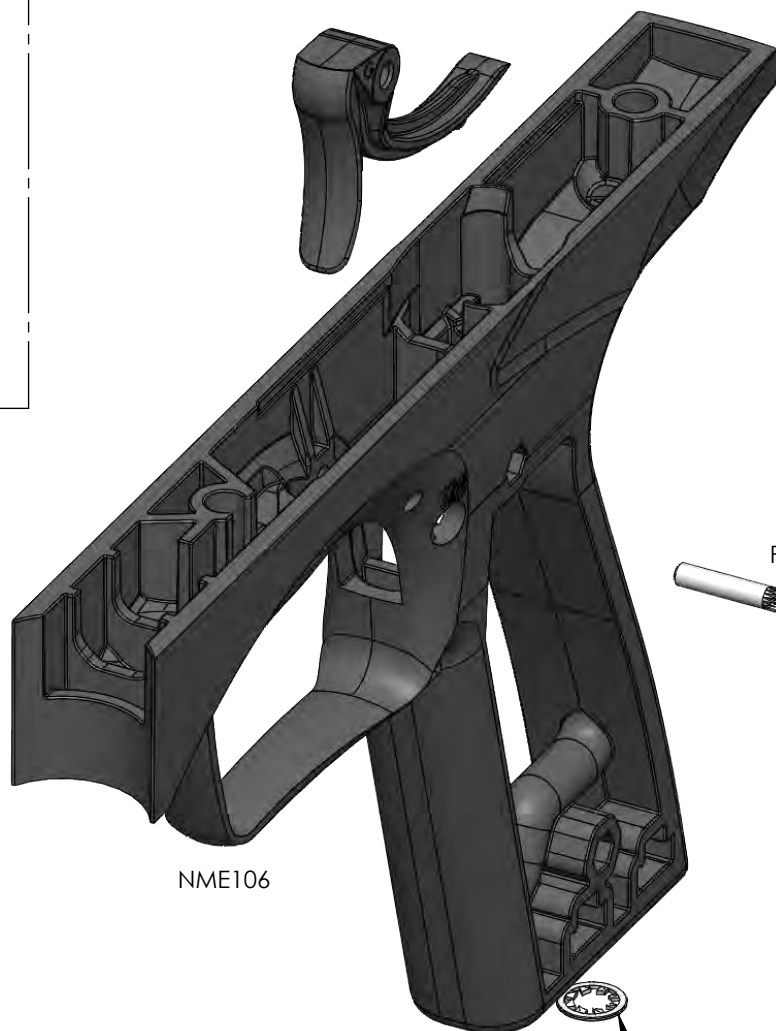


PIN018



SPR008

NME107
Material: Grivory
-Grilon
Item #: 618515TSG-3514 Black 9832



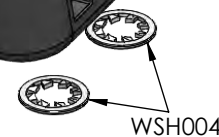
NME106



PIN018



SPR008



WSH004

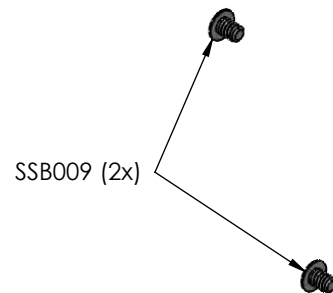
ENMEY 50 TRIGGER ASM GUIDE

GOG PAINTBALL S.A.

THE INFORMATION CONTAINED IN THIS DRAWING IS THE SOLE PROPERTY OF GOG PAINTBALL S.A. ANY REPRODUCTION IN PART OR WHOLE WITHOUT THE WRITTEN PERMISSION OF GOG PAINTBALL S.A. IS PROHIBITED.

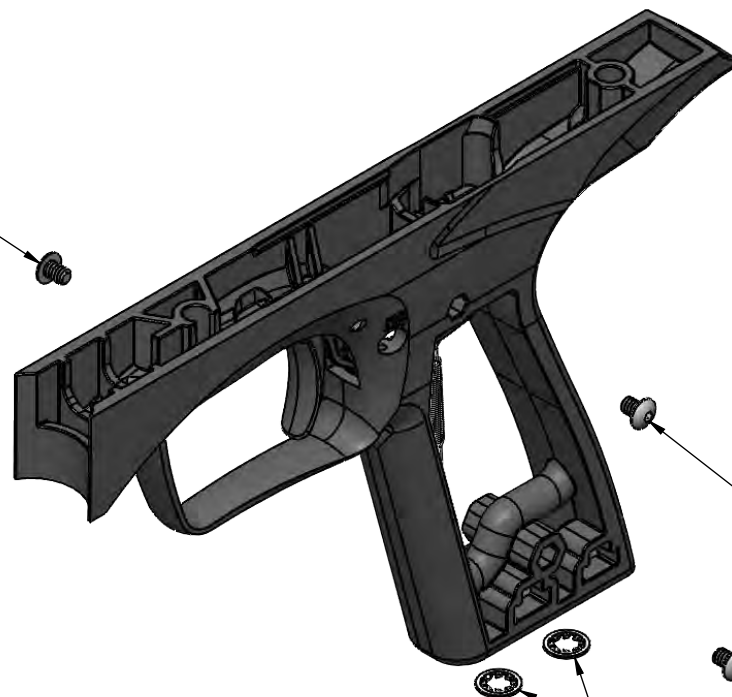


SSB009



SSB009 (2x)

SSB009 - #6-32 x .188" Flat Head Stainless



SSB009 (2x)

WSH004

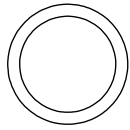
NME116



ENMEY 50 GRIP ASM GUIDE

GOG PAINTBALL S.A.

THE INFORMATION CONTAINED IN THIS DRAWING IS THE SOLE PROPERTY OF GOG PAINTBALL S.A. ANY REPRODUCTION IN PART OR WHOLE WITHOUT THE WRITTEN PERMISSION OF GOG PAINTBALL S.A. IS PROHIBITED.



014



HBR476

OM9014
DOW33 GREASE
(ETHER MATERIAL)



VRG103

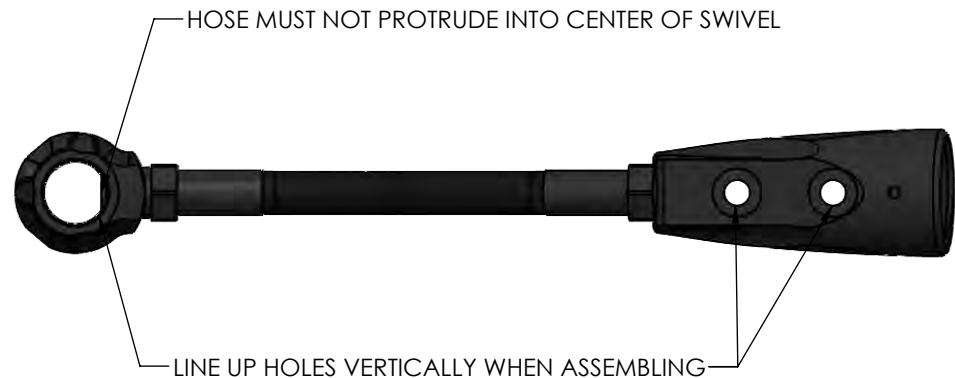


HBR476



ENV136

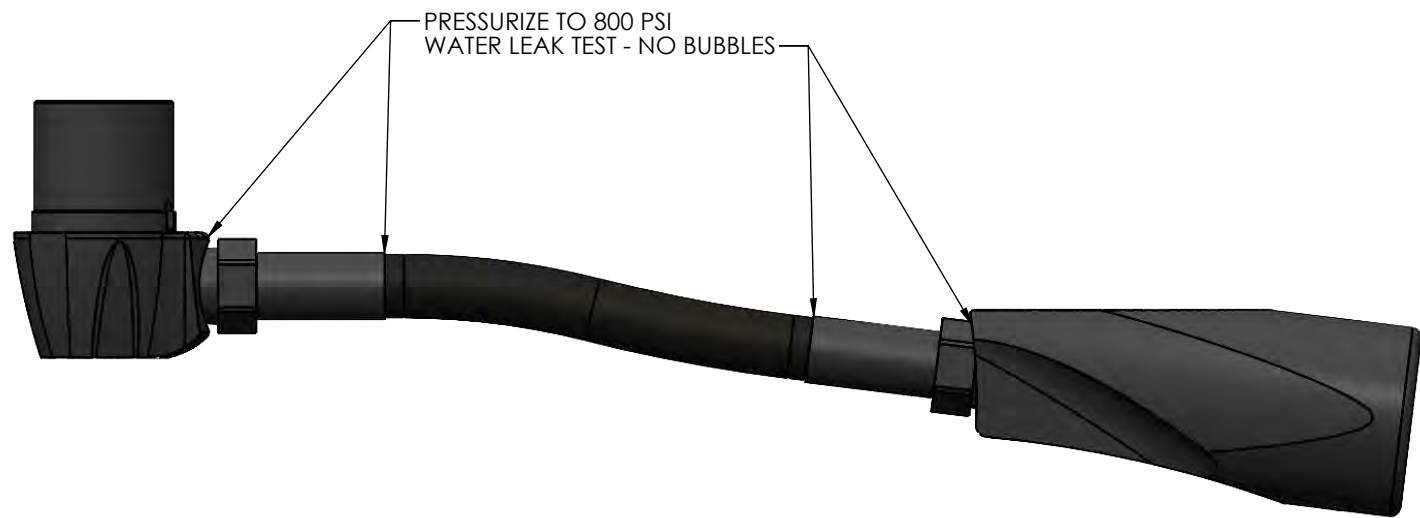
OM9014 - AS014 urethane 90 durometer



ENMEY 50 BOTTOMLINE ASM GUIDE

GOG PAINTBALL S.A.

THE INFORMATION CONTAINED IN THIS DRAWING IS THE SOLE PROPERTY OF GOG PAINTBALL S.A. ANY REPRODUCTION IN PART OR WHOLE WITHOUT THE WRITTEN PERMISSION OF GOG PAINTBALL S.A. IS PROHIBITED.



ENMEV 50 BOTTOMLINE LEAK TEST

GOG PAINTBALL S.A.

THE INFORMATION CONTAINED IN THIS DRAWING IS THE SOLE PROPERTY OF GOG PAINTBALL S.A. ANY REPRODUCTION IN PART OR WHOLE WITHOUT THE WRITTEN PERMISSION OF GOG PAINTBALL S.A. IS PROHIBITED.