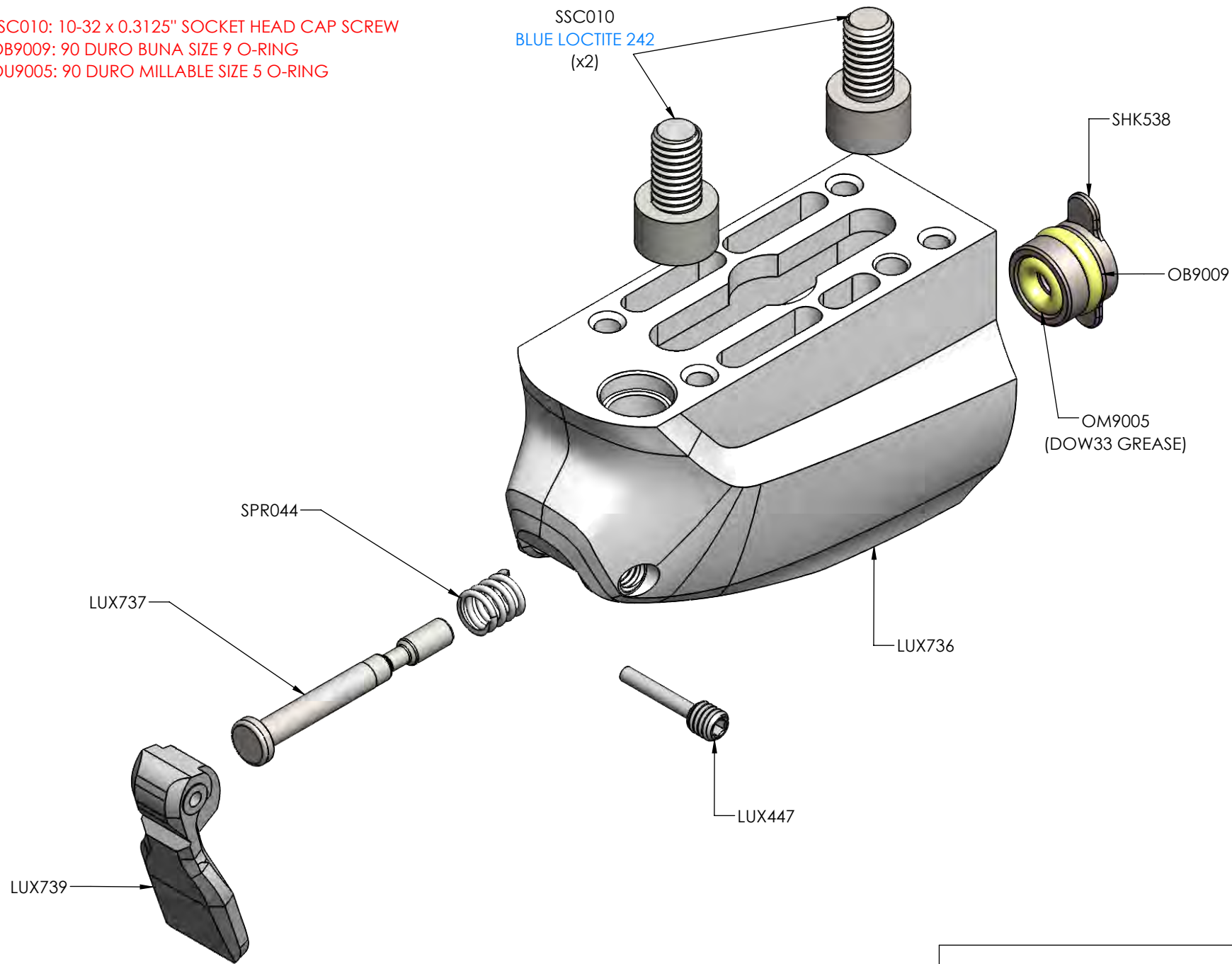


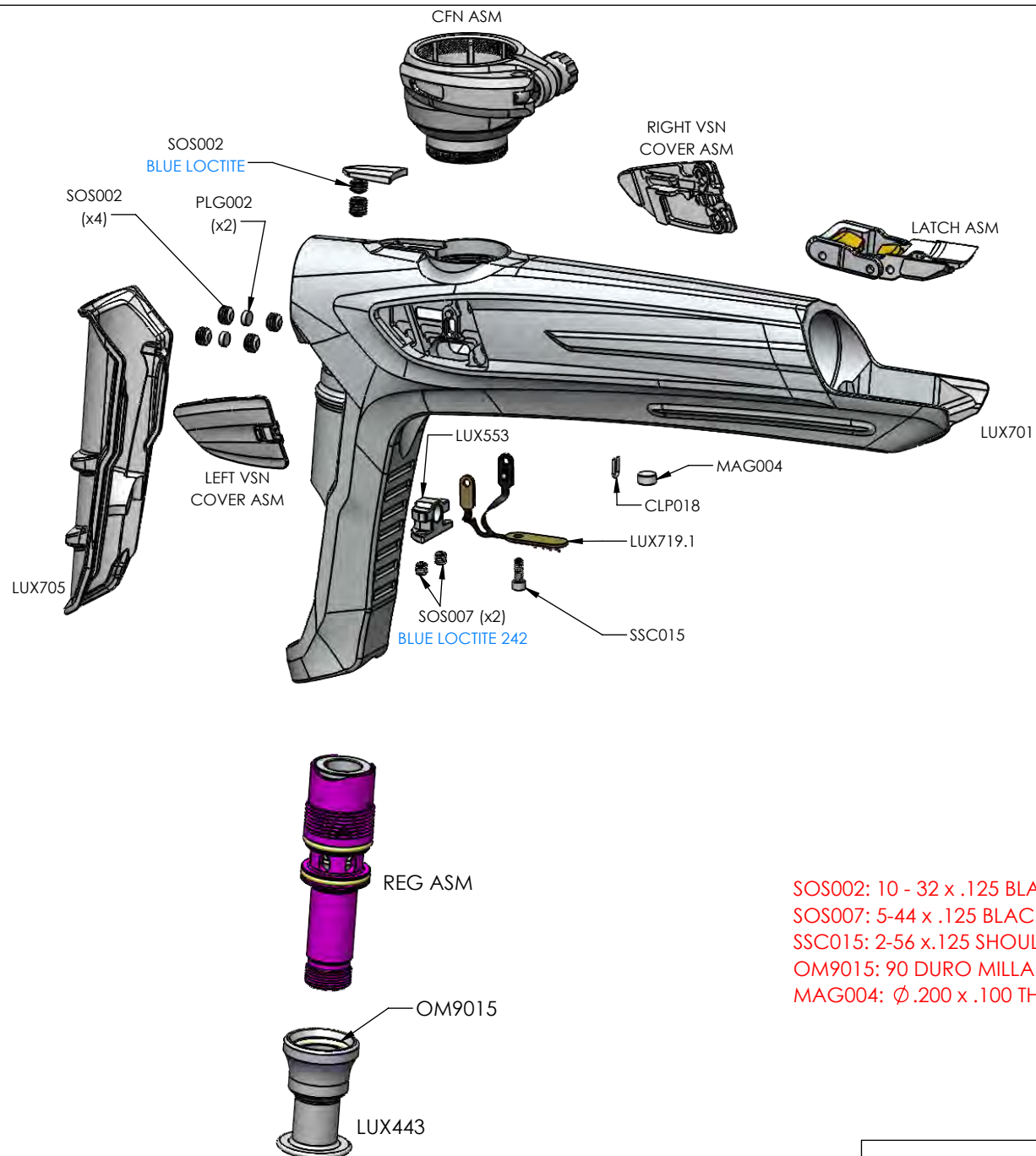
SSC010: 10-32 x 0.3125" SOCKET HEAD CAP SCREW
OB9009: 90 DURO BUNA SIZE 9 O-RING
OU9005: 90 DURO MILLABLE SIZE 5 O-RING



LUXE 7.0 ASA ASM GUIDE

GOG PAINTBALL S.A.

THE INFORMATION CONTAINED IN THIS DRAWING IS THE SOLE PROPERTY OF GOG PAINTBALL S.A. ANY REPRODUCTION IN PART OR WHOLE WITHOUT THE WRITTEN PERMISSION OF GOG PAINTBALL S.A. IS PROHIBITED.

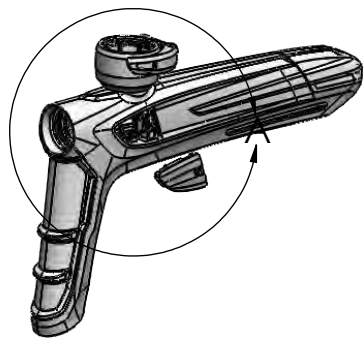


SOS002: 10 - 32 x .125 BLACK OXIDE SET SCREW
 SOS007: 5-44 x .125 BLACK OXIDE SET SCREW
 SSC015: 2-56 x .125 SHOULDER HEAD CAP SCREW
 OM9015: 90 DURO MILLABLE SIZE 15 O-RING
 MAG004: Ø .200 x .100 THICKNESS NEODYMIUM MAGNET

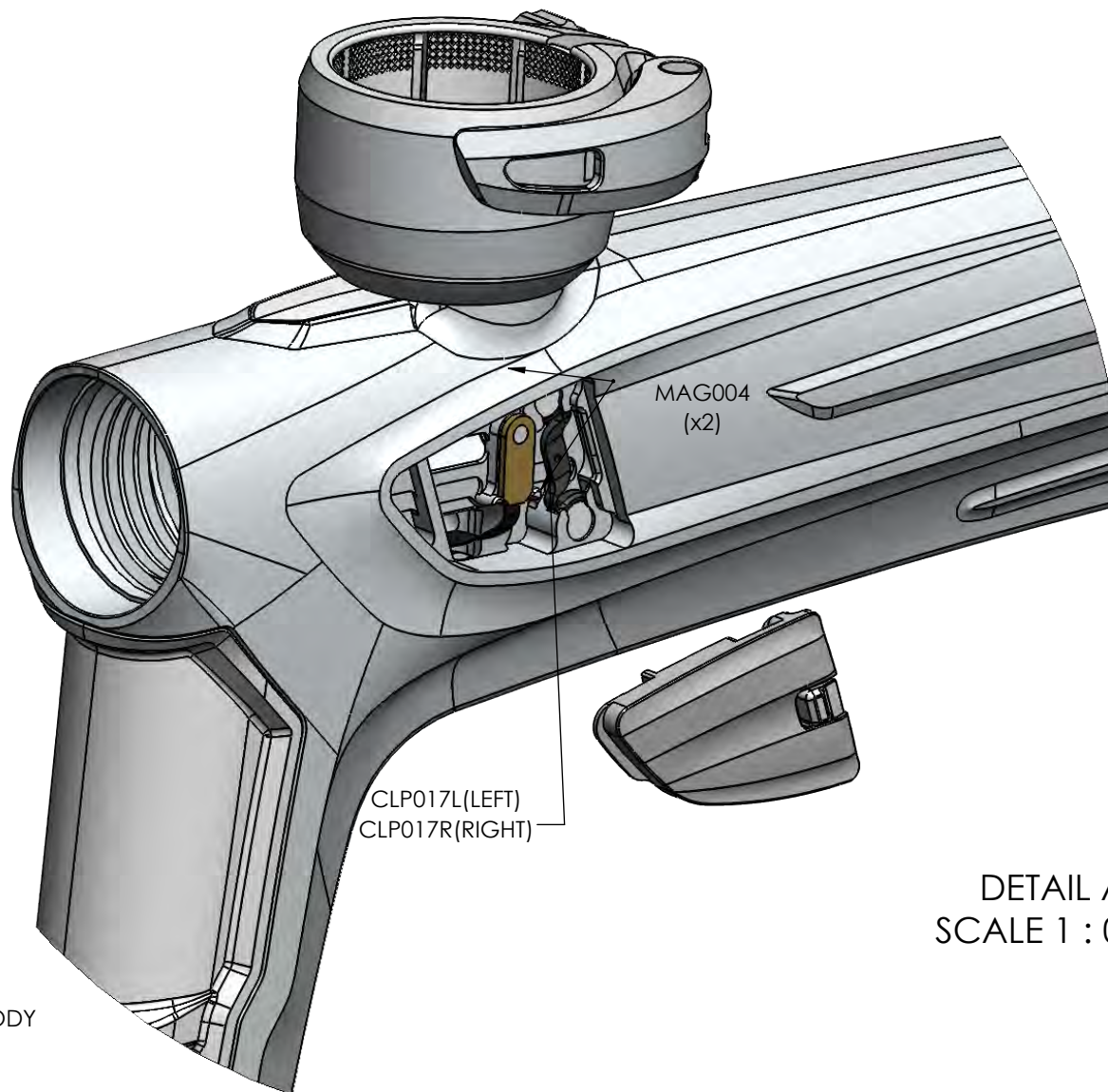
LUXE 7.0 BODY ASM

GOG PAINTBALL S.A.

THE INFORMATION CONTAINED IN THIS DRAWING IS THE SOLE PROPERTY OF GOG PAINTBALL S.A. ANY REPRODUCTION IN PART OR WHOLE WITHOUT THE WRITTEN PERMISSION OF GOG PAINTBALL S.A. IS PROHIBITED.



MAG004: $\varnothing .187 \times .060$ THICKNESS NEODYMIUM MAGNET



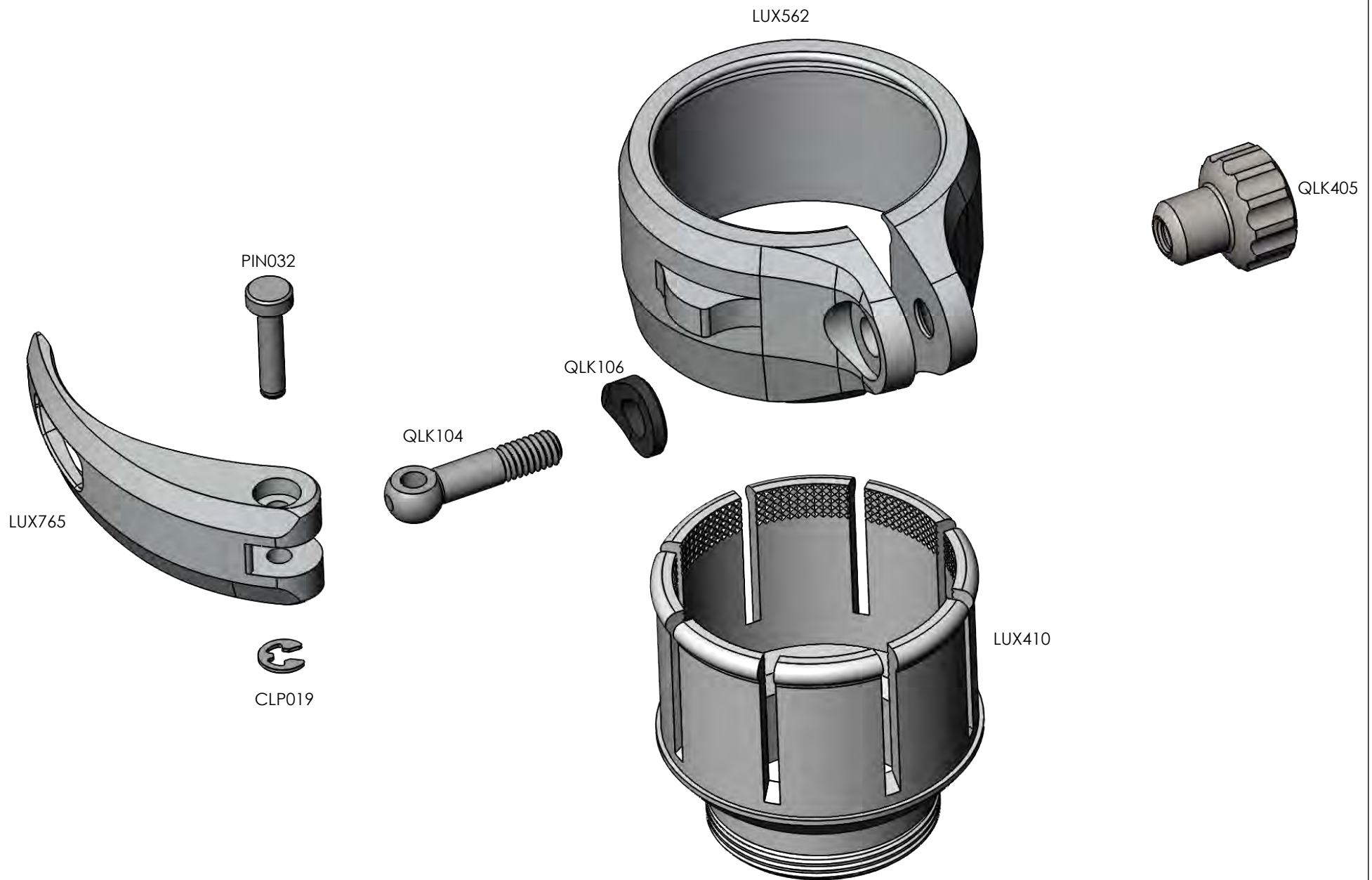
1. INSERT MAGG004(x2) IN TO BODY
2. LOCK MAGNETS IN WITH CLP017
3. ATTACH REST OF VSN COVER ASM TO BODY

DETAIL A
SCALE 1 : 0.75

LUXE 7.0 BODY VSN ASM

GOG PAINTBALL S.A.

THE INFORMATION CONTAINED IN THIS DRAWING IS THE SOLE PROPERTY OF GOG PAINTBALL S.A. ANY REPRODUCTION IN PART OR WHOLE WITHOUT THE WRITTEN PERMISSION OF GOG PAINTBALL S.A. IS PROHIBITED.

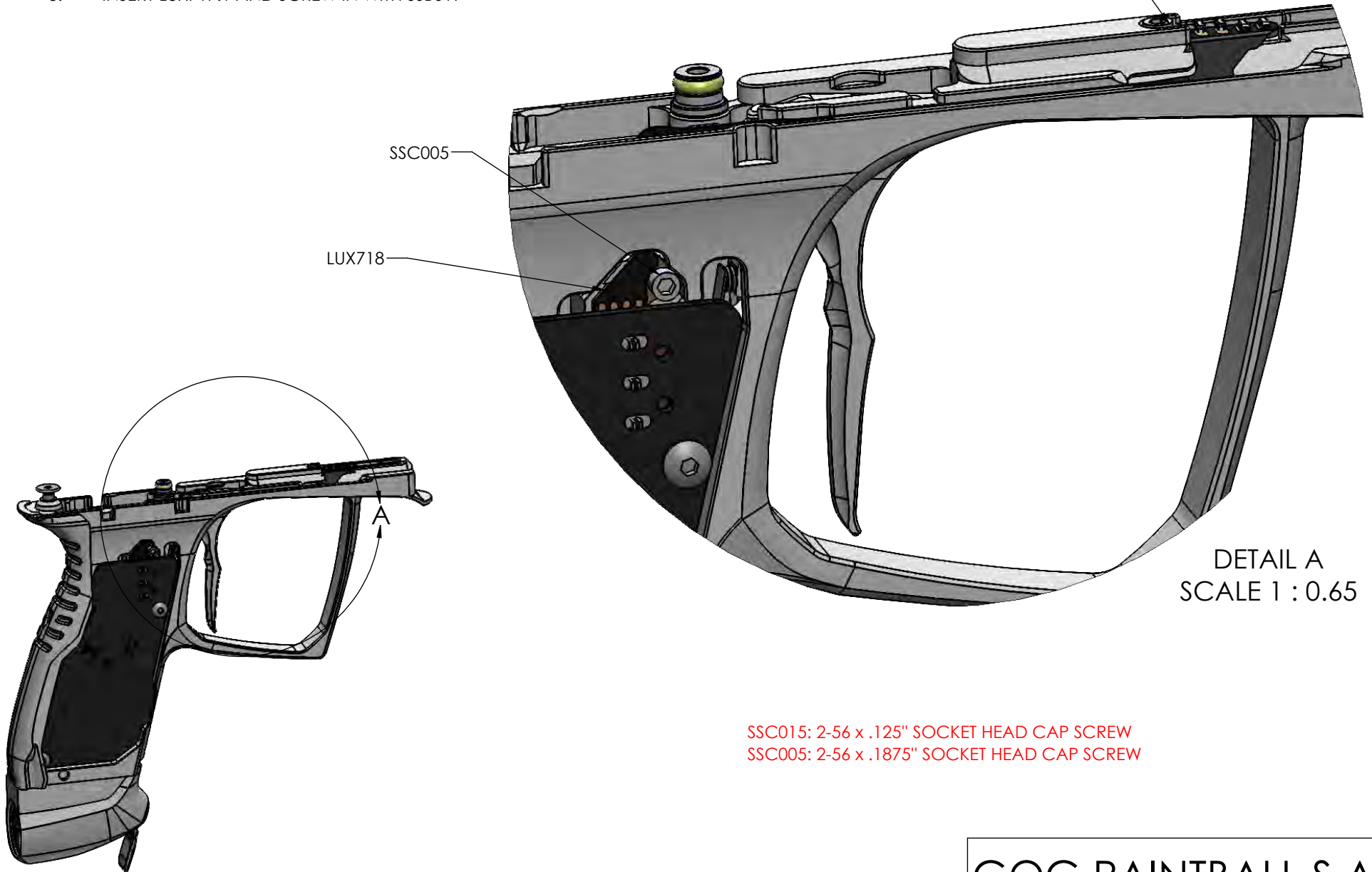


LUXE 7.0 CFN ASM

GOG PAINTBALL S.A.

THE INFORMATION CONTAINED IN THIS DRAWING IS THE SOLE PROPERTY OF GOG PAINTBALL S.A. ANY REPRODUCTION IN PART OR WHOLE WITHOUT THE WRITTEN PERMISSION OF GOG PAINTBALL S.A. IS PROHIBITED.

1. INSERT LUX718 INTO FRAME BEFORE LUX717.1
2. SCREW SSC015 TO LOCK IN LUX718 ON SIDE AND TOP OF FRAME
3. INSERT LUX717.1 AND SCREW IN WITH SSB019



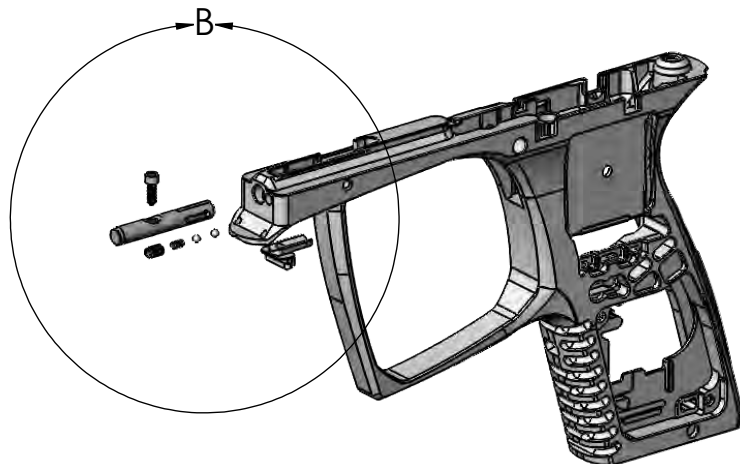
DETAIL A
SCALE 1 : 0.65

SSC015: 2-56 x .125" SOCKET HEAD CAP SCREW
SSC005: 2-56 x .1875" SOCKET HEAD CAP SCREW

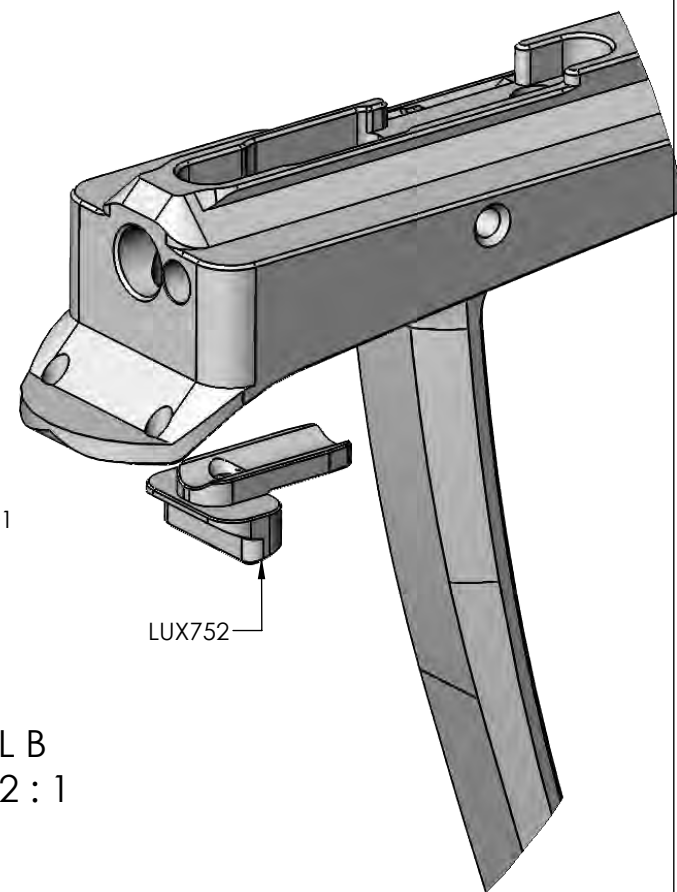
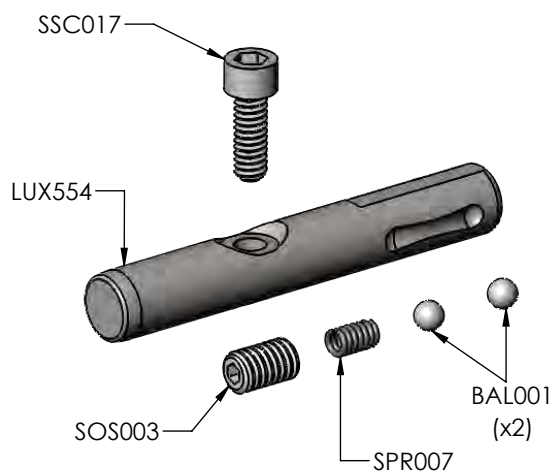
LUXE 7.0 FLEX CIRCUIT ASM

GOG PAINTBALL S.A.

THE INFORMATION CONTAINED IN THIS DRAWING IS THE SOLE PROPERTY OF GOG PAINTBALL S.A. ANY REPRODUCTION IN PART OR WHOLE WITHOUT THE WRITTEN PERMISSION OF GOG PAINTBALL S.A. IS PROHIBITED.



1. INSERT BOTH BAL001 AND SPR007 IN TO SMALL BORE
2. INSERT SOS003 INTO BORE AND TIGHTEN
3. INSERT LUX554 IN TO TRIGGER FRAME
4. LINE UP LUX752 AND SCREW IN SSC017



SOS003: 4-48 x .1875 SET SCREW STAINLESS
 SSC017: 2-56 x .3125 SOCKET HEAD CAP SCREW STAINLESS

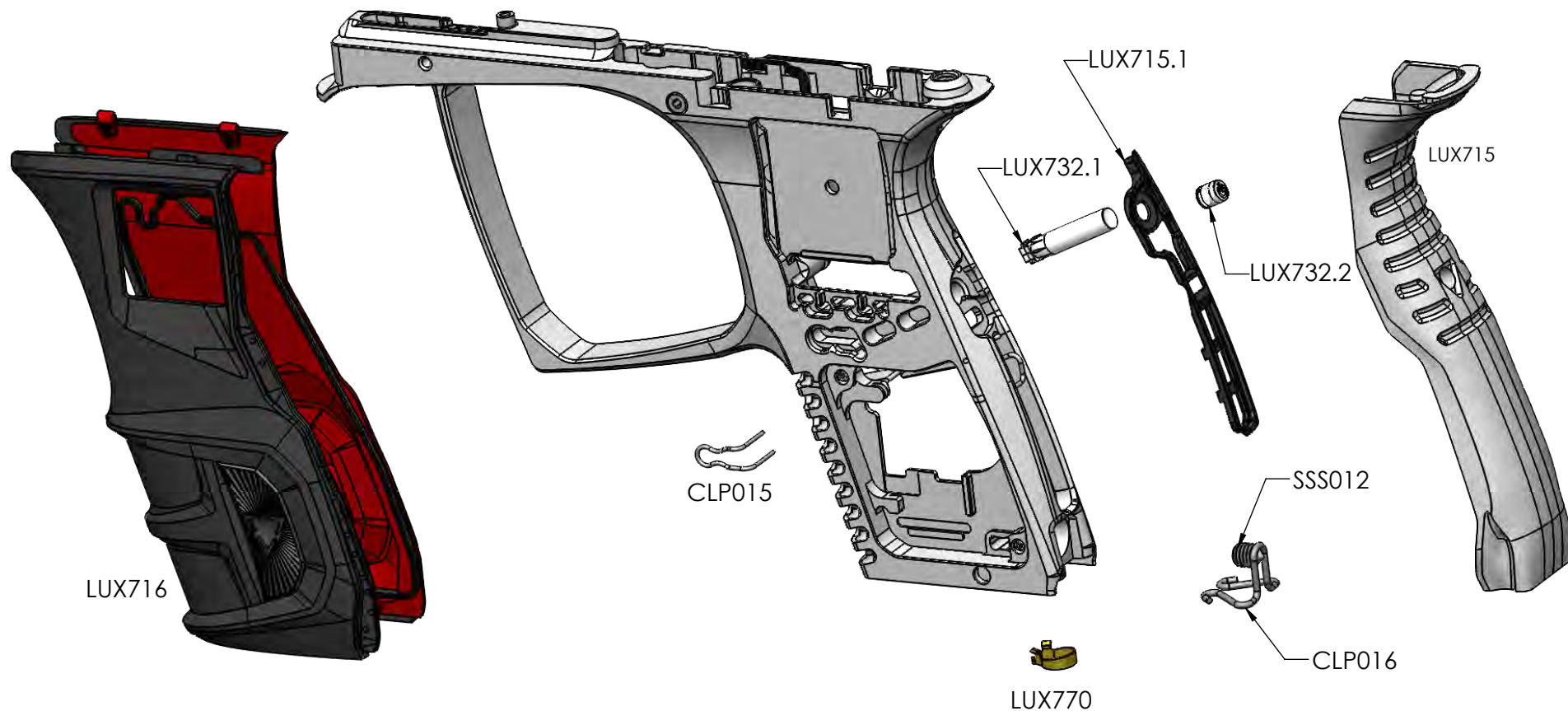
DETAIL B
 SCALE 2 : 1

LUXE 7.0 FRONT LATCH ASM

GOG PAINTBALL S.A.

THE INFORMATION CONTAINED IN THIS DRAWING IS THE SOLE PROPERTY OF GOG PAINTBALL S.A. ANY REPRODUCTION IN PART OR WHOLE WITHOUT THE WRITTEN PERMISSION OF GOG PAINTBALL S.A. IS PROHIBITED.

SSS012:10-32 x .250 DOG POINT SET SCREW



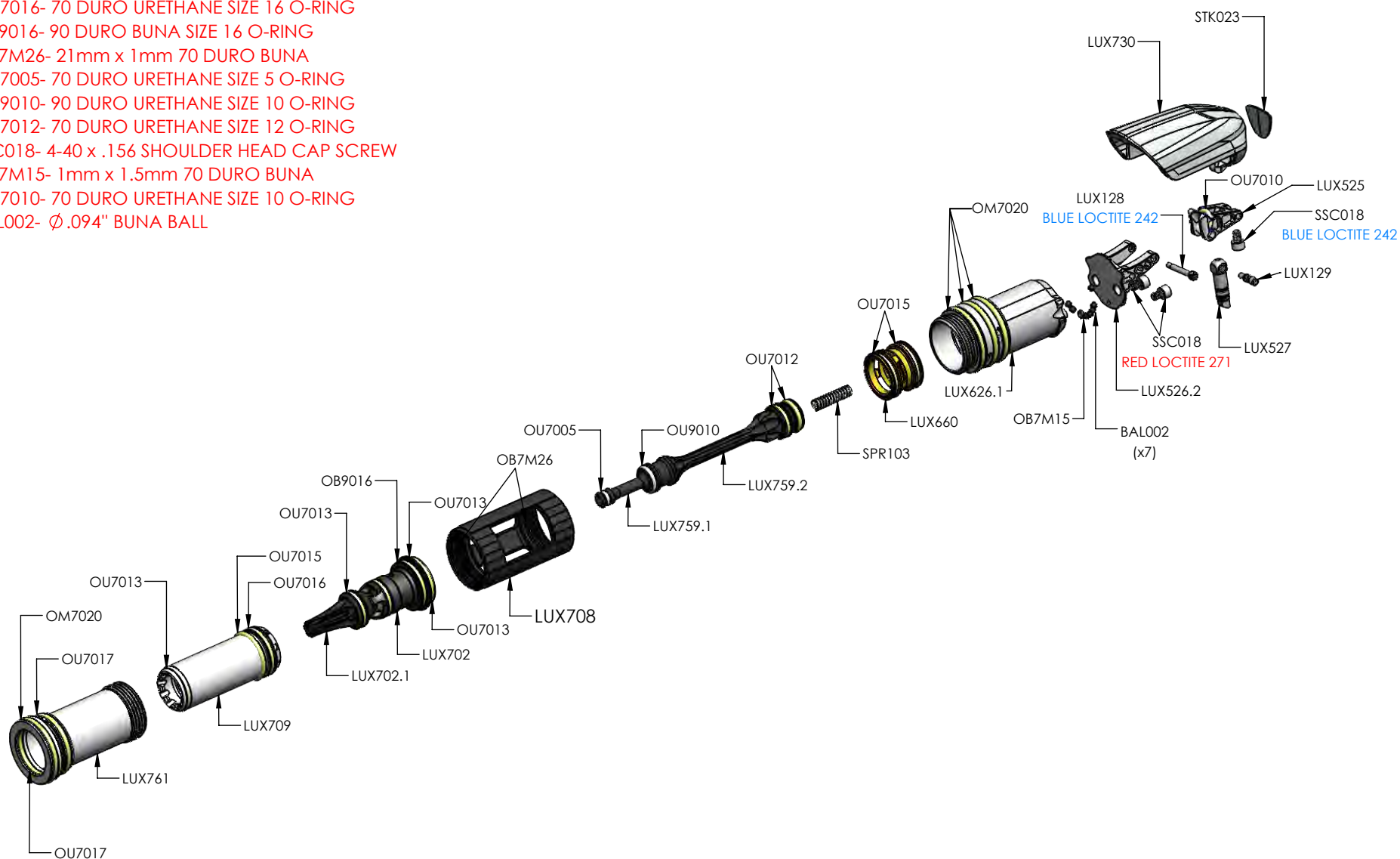
1. SLIDE LUX716 ON TO TRIGGER FRAME
2. INSERT CLP016 IN TO BOTTOM OF LUX715 AND LOCK IN WITH DOG POINT SET SCREW
3. INSERT LUX732.1 IN TO LUX706 AND LOCK IN WITH CLP015
4. INSERT LUX715.1 IN TO LUX706
5. INSERT LUX732.2 AND LOCK IN WITH LUX715 ASM
6. LOCK IN BACK STRAP ASM WITH LUX770

LUXE 7.0 GRIP BACK STRAP ASM

GOG PAINTBALL S.A.

THE INFORMATION CONTAINED IN THIS DRAWING IS THE SOLE PROPERTY OF GOG PAINTBALL S.A. ANY REPRODUCTION IN PART OR WHOLE WITHOUT THE WRITTEN PERMISSION OF GOG PAINTBALL S.A. IS PROHIBITED.

OM7020- 70 DURO MILLABLE SIZE 20 O-RING
 OU7017- 70 DURO URETHANE SIZE 17 O-RING
 OU7013- 70 DURO URETHANE SIZE 13 O-RING
 OU7015- 70 DURO URETHANE SIZE 15 O-RING
 OU7016- 70 DURO URETHANE SIZE 16 O-RING
 OB9016- 90 DURO BUNA SIZE 16 O-RING
 OB7M26- 21mm x 1mm 70 DURO BUNA
 OU7005- 70 DURO URETHANE SIZE 5 O-RING
 OU9010- 90 DURO URETHANE SIZE 10 O-RING
 OU7012- 70 DURO URETHANE SIZE 12 O-RING
 SSC018- 4-40 x .156 SHOULDER HEAD CAP SCREW
 OB7M15- 1mm x 1.5mm 70 DURO BUNA
 OU7010- 70 DURO URETHANE SIZE 10 O-RING
 BAL002- Ø.094" BUNA BALL

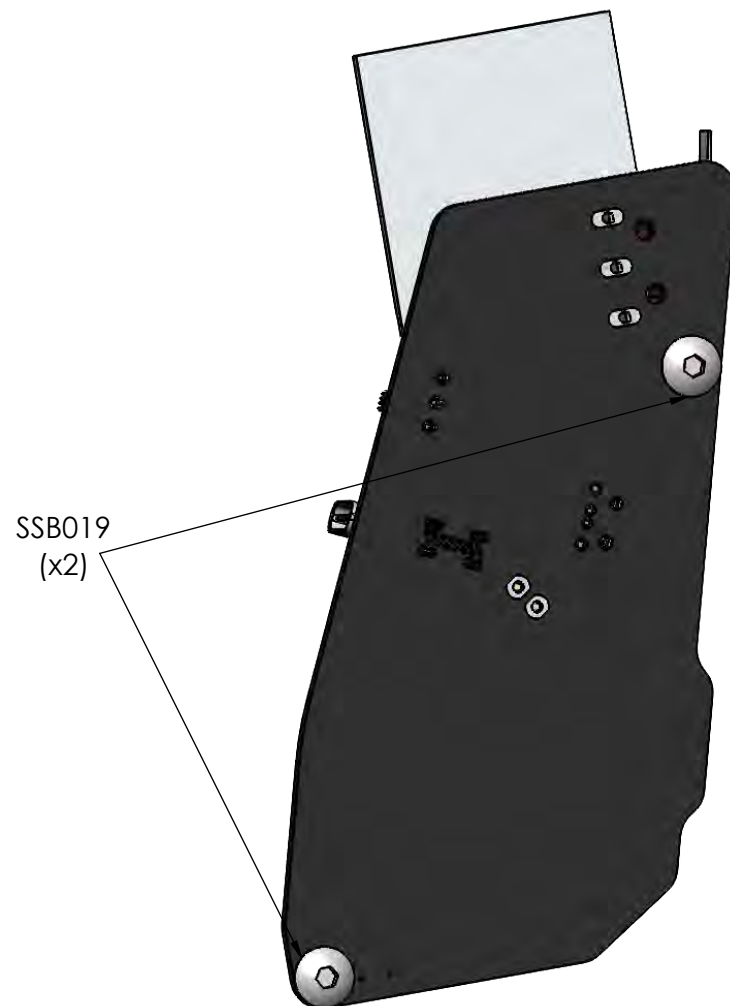


LUXE 7.0 INTERNALS ASM GUIDE

GOG PAINTBALL S.A.

THE INFORMATION CONTAINED IN THIS DRAWING IS THE SOLE PROPERTY OF GOG PAINTBALL S.A. ANY REPRODUCTION IN PART OR WHOLE WITHOUT THE WRITTEN PERMISSION OF GOG PAINTBALL S.A. IS PROHIBITED.

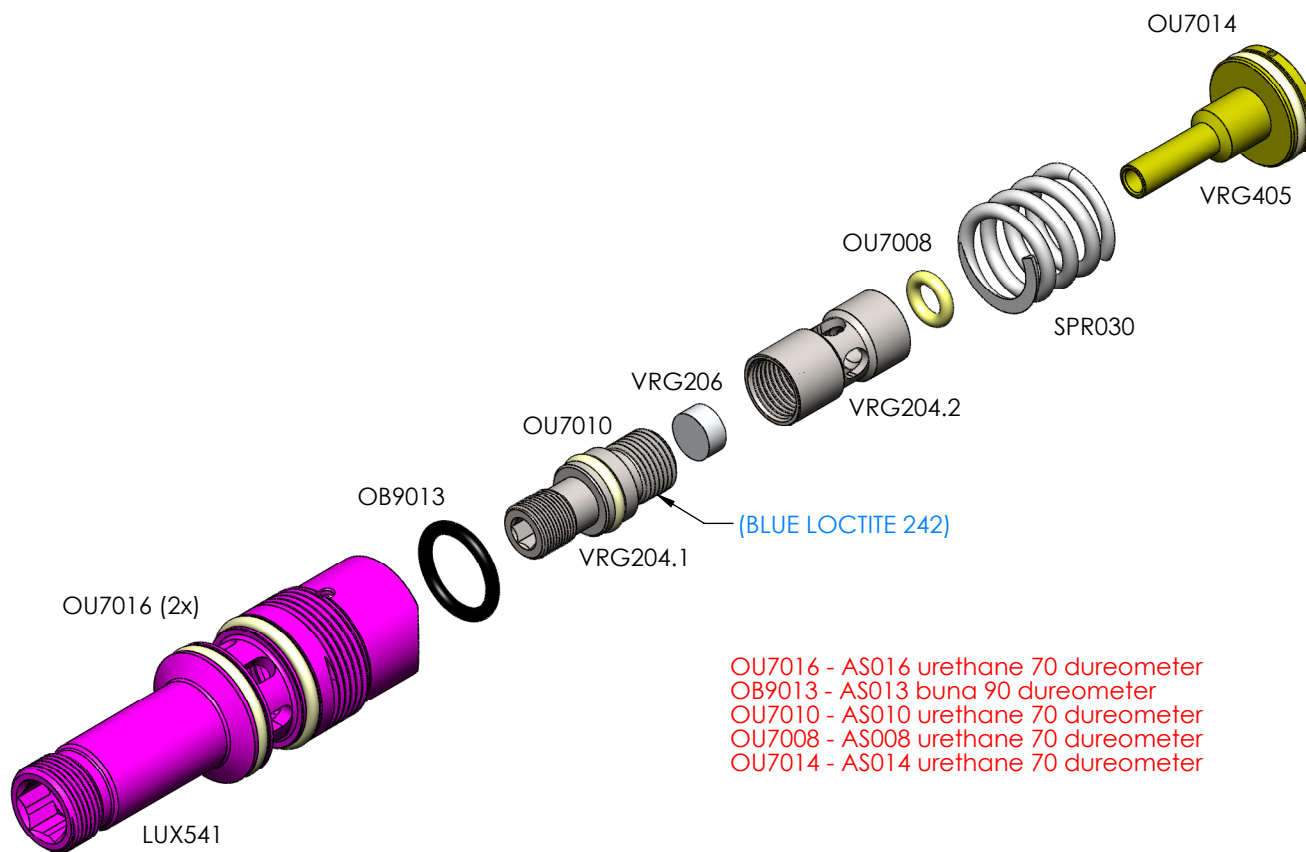
SSB019: 5-40 x .250 BUTTON CAP HEAD SCREW STAINLESS



LUXE 7.0 PCB MAIN ASM

GOG PAINTBALL S.A.

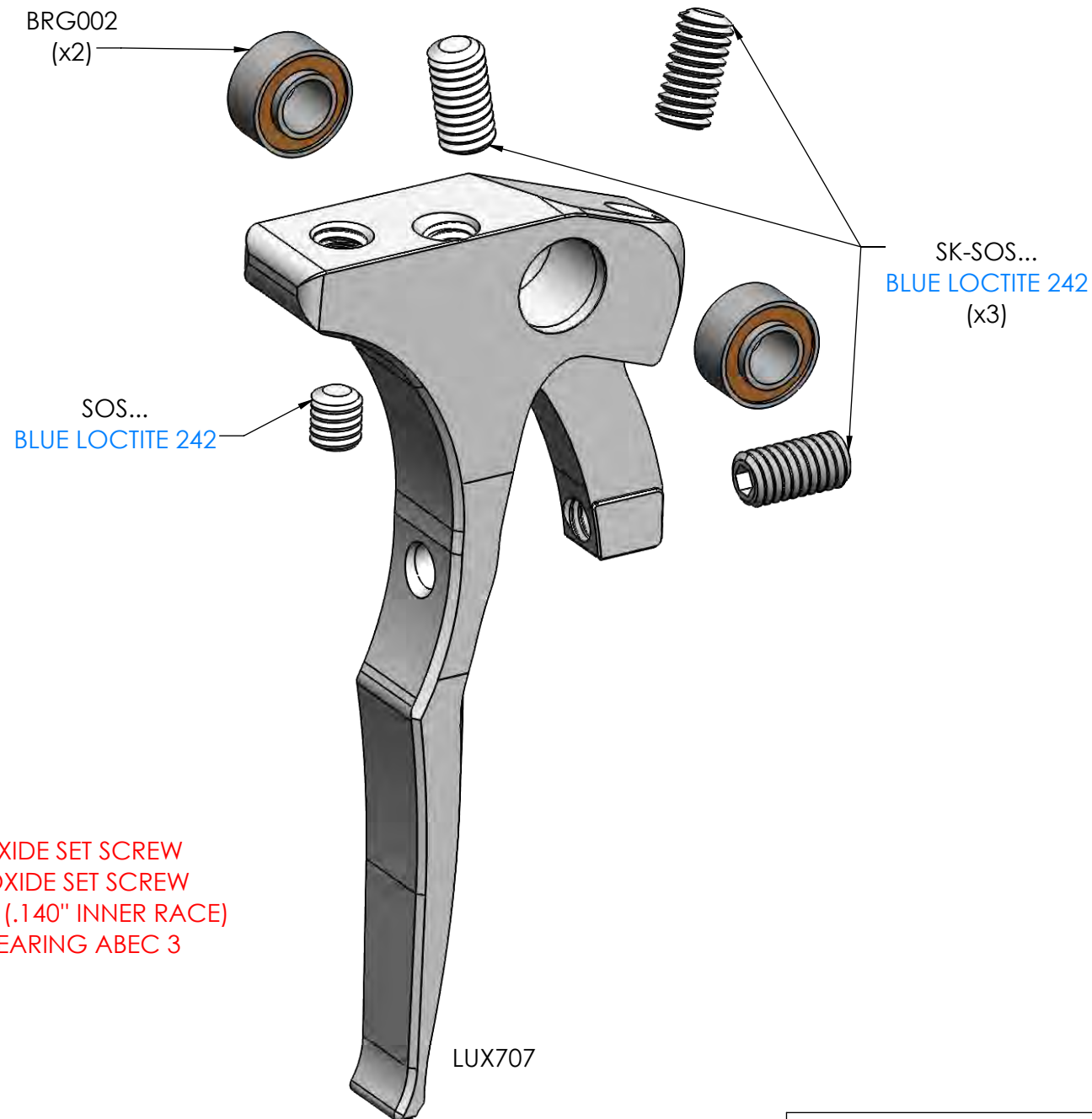
THE INFORMATION CONTAINED IN THIS DRAWING IS THE SOLE PROPERTY OF
GOG PAINTBALL S.A. ANY REPRODUCTION IN PART OR WHOLE WITHOUT THE
WRITTEN PERMISSION OF GOG PAINTBALL S.A. IS PROHIBITED.



LUXE X REG ASM GUIDE

GOG PAINTBALL S.A.

THE INFORMATION CONTAINED IN THIS DRAWING IS THE SOLE PROPERTY OF GOG PAINTBALL S.A. ANY REPRODUCTION IN PART OR WHOLE WITHOUT THE WRITTEN PERMISSION OF GOG PAINTBALL S.A. IS PROHIBITED.

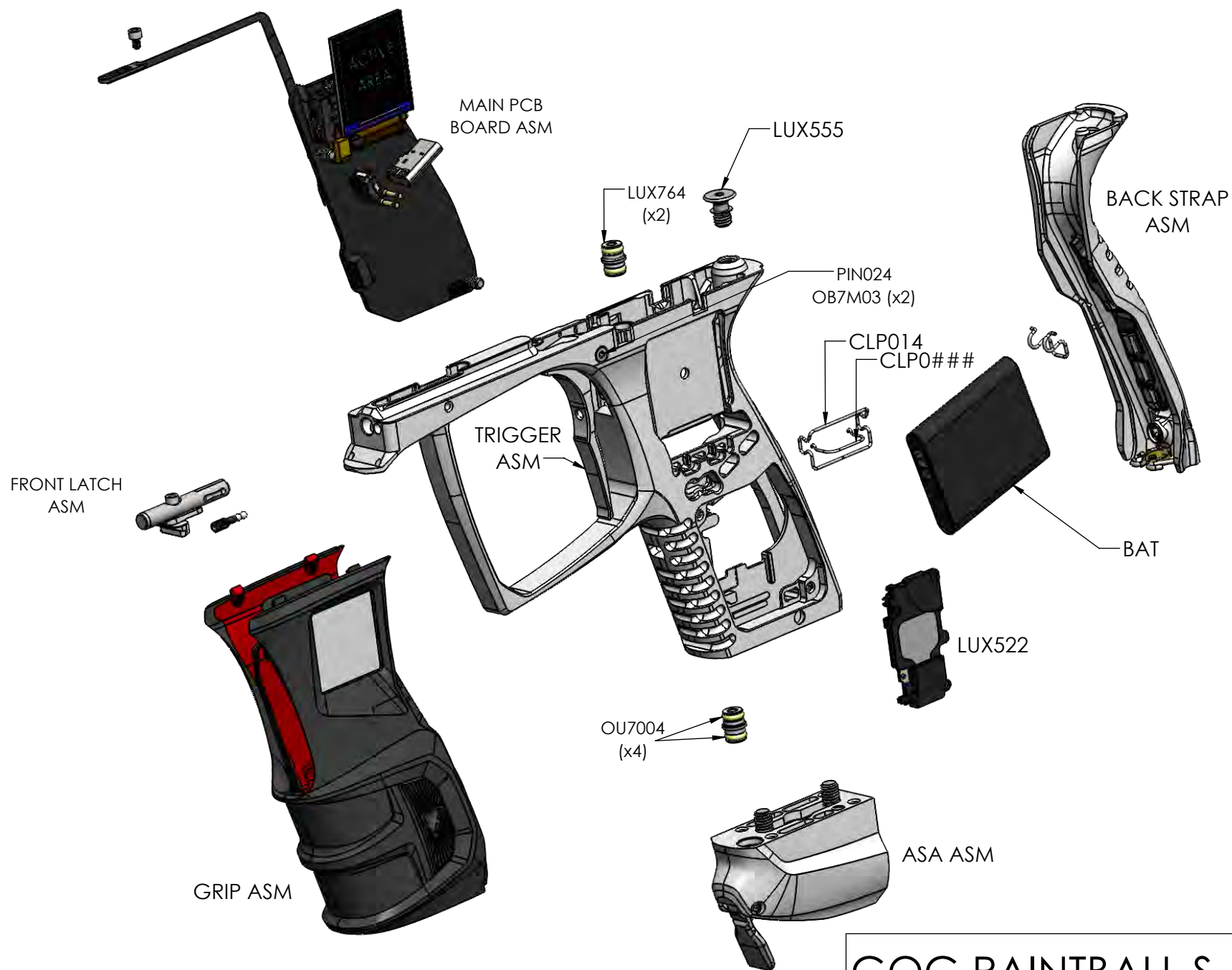


SOS...: 5-44 x .1275" BLACK OXIDE SET SCREW
SOS007: 5-44 x .250" BLACK OXIDE SET SCREW
BRG002: .250 ϕ x .109" WIDE (.140" INNER RACE)
STAINLESS ROLLER BEARING ABEC 3

LUXE 7.0 TRIGGER ASM

GOG PAINTBALL S.A.

THE INFORMATION CONTAINED IN THIS DRAWING IS THE SOLE PROPERTY OF GOG PAINTBALL S.A. ANY REPRODUCTION IN PART OR WHOLE WITHOUT THE WRITTEN PERMISSION OF GOG PAINTBALL S.A. IS PROHIBITED.

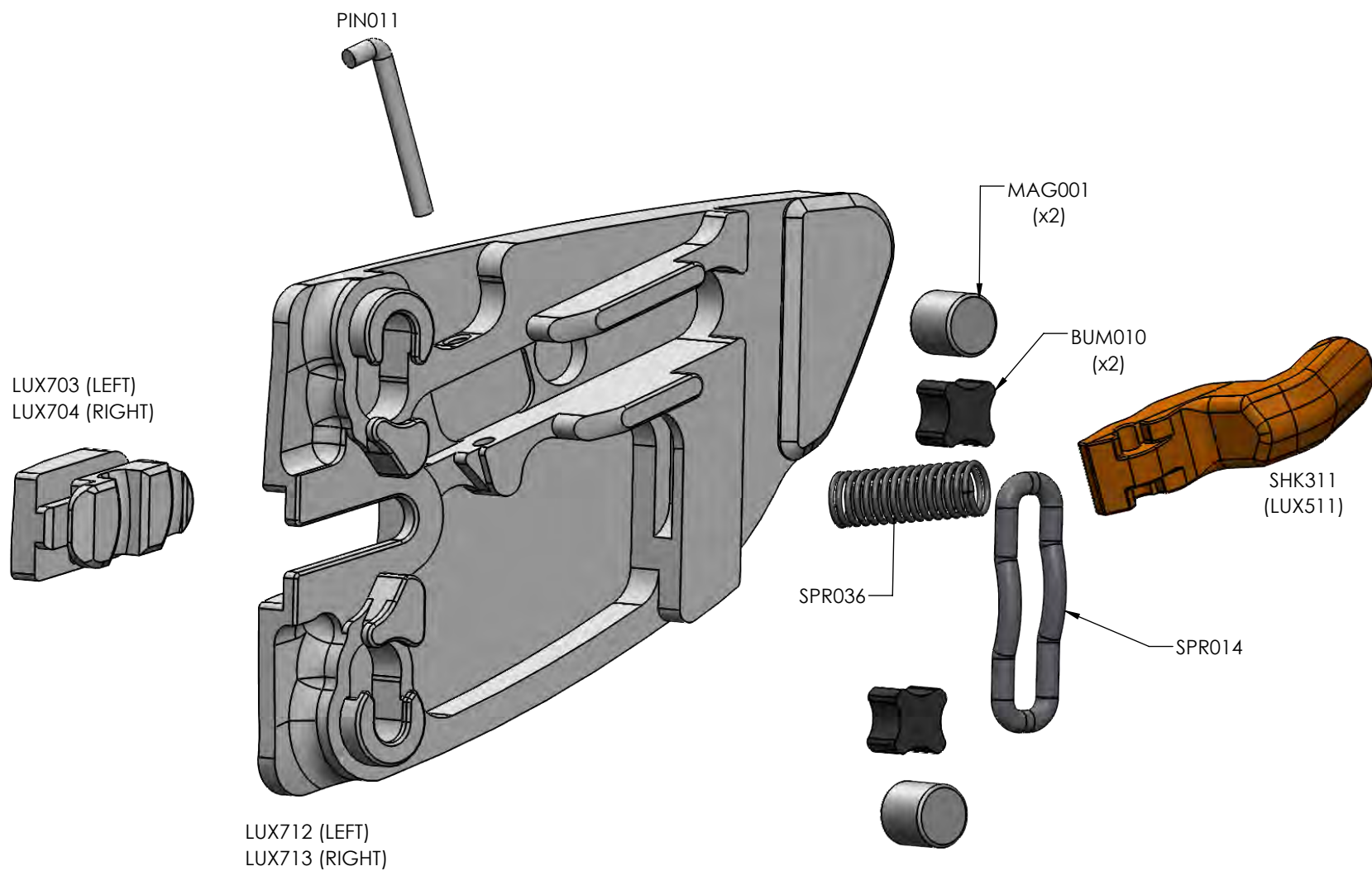


LUXE 7.0 TRIGGER FRAME ASM

GOG PAINTBALL S.A.

THE INFORMATION CONTAINED IN THIS DRAWING IS THE SOLE PROPERTY OF GOG PAINTBALL S.A. ANY REPRODUCTION IN PART OR WHOLE WITHOUT THE WRITTEN PERMISSION OF GOG PAINTBALL S.A. IS PROHIBITED.

MAG001: $\varnothing .100 \times .100$ THICKNESS NEODYMIUM MAGNET
BUM010: 1/16 X-PROFILE O-RING CHORD STOCK 0.070" THICK



LUXE 7.0 VSN COVER ASM

GOG PAINTBALL S.A.

THE INFORMATION CONTAINED IN THIS DRAWING IS THE SOLE PROPERTY OF GOG PAINTBALL S.A. ANY REPRODUCTION IN PART OR WHOLE WITHOUT THE WRITTEN PERMISSION OF GOG PAINTBALL S.A. IS PROHIBITED.