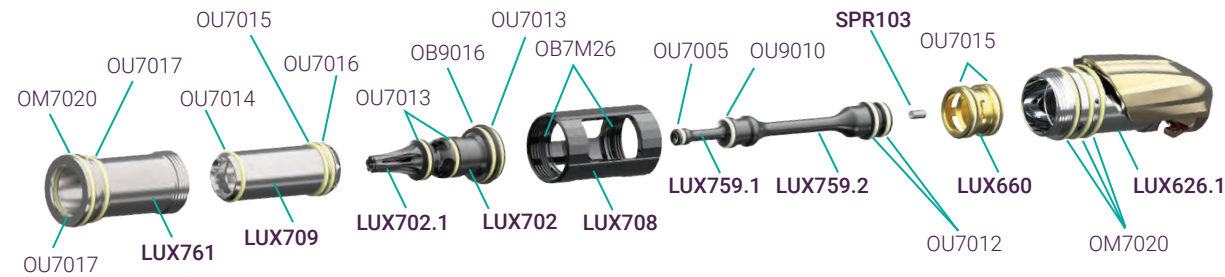


POWER CORE

11 POWER CORE



REINSTALL BACKSTRAP

When re-installing the backstrap squeeze both sides of the grip panel tight against the trigger frame to allow the backstrap to lock into the grip panel sides. {FIG. 12} **IMPORTANT!** Make sure the backstrap is fully closed or the power button will not work.

12 REINSTALL BACK STRAP



13 PROGRAMMING MENU



WARRANTY

**WARRANTY** – Warranty Support and Service for DLX Technologies (DLX) products is provided by factory trained service technicians and DLX Authorized Service Locations. The DLX warranty is valid for one (1) year to initial retail purchaser. The warranty is limited to defects and workmanship in materials covering the paintball marker and regulator components. The electronic components and solenoid are warranted for six (6) months. Disposable parts (Batteries, O-Rings, Seals, etc.) are not warrantied. This warranty is effective only if the customer registers their marker online in our RMA system within 30 days of purchase. The warranty is non-transferable. This warranty is limited to repair or replacement of defective parts with the customer responsible for transporting the product to and from the Luxe® Paintball Authorized Service Location.

This warranty does not cover surface damages (scratches and nicks), misuse, or improper disassembly and reassembly. Attempts made to drill holes or remove metal from external surfaces could degrade the performance and/or safety of the marker and may only be preformed with written approval. The only authorized lubricant for the marker is GR33SE™ Lubricant. Use of any other lubricant could result in reduced performance and invalidation of the DLX warranty.

Trigger alteration of any kind may result in serious injury, do NOT attempt to alter the trigger assembly in any way. Use of aftermarket components within the bolt system, trigger or other operational components voids any warranty on the modified assembly and its interacting systems. Removal of factory anodizing or other finish voids the warranty of any affected component as tolerances will be effected by such action. DLX strongly discourages use of aftermarket internal components as they may jeopardize the performance and/or safety of your paintball marker.

Luxe® and Freak® registered trademarks owned by DLX Technology Group.



QUICK START  
GUIDE | V.01

WARNING

**WARNING!** – THIS IS NOT A TOY. MISUSE OF THE LUXE® MAY RESULT IN SERIOUS INJURY OR DEATH. EYE PROTECTION DESIGNED FOR PAINTBALL USE MUST BE WORN BY THE USER AND ANY PERSON WITHIN RANGE OF THE LUXE®. DLX RECOMMENDS THAT THE LUXE® ONLY BE SOLD TO PERSONS 18 AND OLDER. **THOROUGHLY READ THE LUXE® QUICK START GUIDE BEFORE OPERATING.**

LUXE SETUP

**BATTERY** – The lithium polymer battery in your Luxe® must be fully charged before use. To access the charging port on your Luxe®, do so by removing the trigger frame back strap by pulling rearward on the finger grooves located at the bottom of the backstrap {FIG. 01} Connect the USB Type C charging connector to the Luxe® circuit board. {FIG. 02} Once connected to the Luxe®, power button will glow red when charging. When the Luxe® battery is fully charged the power button will turn green. The Luxe® is compatible with standard USB and USB-C chargers, allowing it to be charged directly from a portable phone power pack, car USB power source, laptop computer or other USB compliant power supply. The battery may also be removed and charged separately with the optional Luxe® battery charger. Even if stored, the battery should be charged at least once every 6 months. **NOTE:** Battery status is not shown when marker is charging. Approximate charge time is 45 min.

To install or remove the lux battery just flip open or close the battery retaining clip {FIG. 03A} Note the correct orientation of the battery before reinstalling {FIG. 03B} Close / lock the battery locking clip to secure the battery. {FIG. 03C}

**WARNING!** – The back strap cannot be re-installed until after the battery locking clip is in the down/locked position. {FIG. 03C}

01 BACK STRAP



02 CHARGING



03 BATTERY



SETUP & OPERATION

**POWER** – Turn on your Luxe® by double-clicking the power button or pressing and holding it for two seconds. {FIG. 02}] When the Luxe® is on, the LCD display will be illuminated to show its status. {FIG. 04}] **WARNING!– Turning off your Luxe® is the equivalent of setting the safety on a mechanical paintball marker, but should not be relied on in place of a barrel blocking device and paintball goggles.** Your Luxe® will turn off automatically if it sits idle for one hour or turn off by holding the power button for 2 seconds.

**VISION** – The Vision® anti-chop system is on by default. It may be turned off or back on with a quick double-tap of the button. Vision® status will be indicated in the Luxe® display a green Oval with a center dot when a ball is detected in the breech, no dot when breech is clear. Vision off will be shown with a red oval. when a ball is detected a dot will appear in the center of the oval. Fault indicates that the beam has not cleared after firing, usually due to debris blocking an eye.

**TOURNAMENT LOCK** – The Luxe® tournament lock switch makes the programming menu unavailable when it is turned on. To change the lock setting, remove the gripframe backstrap then slide the tournament lock switch up or down (UP=lock DOWN=unlocked) with an allen key. {FIG.08} The lock status is displayed on the LCD screen with an open or locked padlock.

**BARREL/REGULATOR GRIP PANEL** – Assemble the included Freak® XL Barrel and install it on your Luxe®. The grip panel on the vertical regulator can be removed by unscrewing the regulator nut on the bottom of the vertical regulator with a 5/16-inch hex-key. {FIG.06B}

**BARREL BLOCKER** – The barrel blocker is an important safety device and should be used any time the Luxe® is connected to an air supply or turned on unless all persons within range are protected by paintball goggles and or netting. Slide the barrel blocker over the end of the barrel cinch down the cords over the rear of the marker to secure it in place.

**AIR SETUP** – Your Luxe® is a high-performance paintball marker. Use only regulated compressed air as a power source. HPA systems set for 450-550 psi output are ideal. Low-output 250psi systems may be used with your Luxe® but may cause velocity drop-off at high rates of fire. With the barrel blocker in place, screw a filled paintball compressed air system into the Luxe® ASA. Charge your Luxe® with air by rotating the ASA charging handle to the rear position. {FIG.05}

**WARNING! – Once your Luxe® has been charged with air, it can hold enough air to fire 2 or more shots, even after the HPA system has been removed.**

**VELOCITY ADJUSTMENT** – Velocity must be tested and adjusted at the start of each paintball session. Attach a hopper and filled HPA system to your Luxe®. Fill the hopper with fresh 68-caliber paintballs. While wearing paintball goggles, while everyone in range is similarly protected, remove the barrel blocking device, rotate the ASA charging handle to charge your Luxe® with air, turn on the power and take a few test shots over a chronograph. Adjust the velocity of your Luxe® with a 5/32-inch hex key inserted in the bottom of the marker's vertical regulator. Turn clockwise (like tightening a screw) to increase velocity and counter-clockwise (like loosening) to decrease. After each adjustment take a few shots, then re-adjust as needed until the desired velocity is reached. Never adjust your Luxe® to fire at velocities greater than 300 feet per second (91.4 m/s). {FIG. 06A}

### 04 LCD DISPLAY

### 05 AIR SETUP

### 06 VELOCITY ADJUSTMENT

SETUP & OPERATION

**DEGASSING** – After use, remove the hopper and paintballs, then turn off your Luxe®, secure the barrel blocker in place and turn off the ASA by swinging the ASA charging handle to its extended position. This will relieve air pressure between the ASA and vertical regulator, but, the Luxe® Power Core will still be charged with air. Relieve the internal pressure by pressing the bottom back of the quick-strip latch at the back of your marker. This will degas your Luxe® and sound similar to opening a can of soda. Do not attempt to degas your Luxe® while the ASA charging handle is in the charged position, as the continuous rush of gas will unseat an o-ring in the Luxe® bolt assembly, causing a leak.

**WARNING! – If the Luxe® Power Core is pulled out of the body before it is fully de-gassed it may be under enough pressure to fire a single low-power shot as it is being removed. Always turn off and or remove the gas supply (see the Luxe® manual or quick-start) and hold the quick-strip latch open until no escaping gas can be heard, before pulling back to extract the power core.** {FIG. 07}

### 07 DEGASSING IMPORTANT!

### 08 TOURNAMENT LOCK

### 09 TRIGGER ADJUSTMENT

**CLEANING** – The Luxe® power core can be removed for cleaning or inspection by gripping the top of the quick-strip latch and pulling the entire assembly out the back of the marker. The bolt serves as the marker's exhaust valve and is the main moving part. Unscrew the fire chamber from the quick-strip mechanism and the bolt may be removed from between the two components. Clean the parts of the power core and replace any o-rings showing signs of damage or severe wear. Lightly lubricate the contact surfaces of all o-rings with Luxe® GR33SE™. Non-approved lubricants may cause damage and void your warranty. Do not use oil. This simple cleaning, and the Detent/Vision® cleaning is the only routine maintenance required to properly care for your Luxe®. {FIG. 11}

TRIGGER ADJUSTMENT

**TRIGGER ADJUSTMENT** – Your Luxe® features four-point trigger adjustment. Each of the four settings may be adjusted with a 1/16 inch hex key. Pre-Travel limits how far forward the trigger can swing. Post-Travel limits how far back the trigger can swing. Activation point adjusts how far into the pull the trigger switch is activated to fire your Luxe®, and trigger resistance adjusts the strength of the magnetic field that resets the trigger.{FIG. 08} **WARNING! – Always use a barrel blocking device when not playing.**

ELECTRONIC ADJUSTMENTS

**PROGRAMMING** – The Luxe® LCD display and exclusive Luxe® voice feedback make it easy to navigate your marker's software menus. Unlock the marker and turn it on while holding back the trigger to open the Main Menu. Pull the trigger to scroll through the available settings. To make a change, find the desired setting and tap the power button. The Luxe® will display the currently selected value for that sub-menu on its LCD display with "SET" appearing on screen. Changes may be made by pulling the trigger to cycle through the available values. Tapping the power button will save the value and return to the main menu. Press the power button for approximately 2 seconds to turn off the Luxe® and exit programming mode. {FIG. 04 & FIG. 013}