

SOS007 SET SCREWS NEED ADJUSTED WHILE TEST FITTING THE TRIGGER FRAME. TO ENSURE TH EPIN OPERATES SMOOTHLY. ALSO MUST PULL DOWN ON FRONT OF FRAME TO ENSURE LUX553 IS NOT TOO LOOSE AND EYES DO NOT BECOME DISCONNECTED.

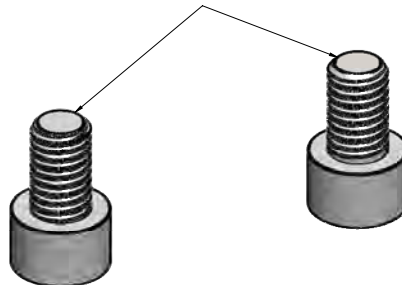
LUXE TM40 BODY ASM GUIDE

GOG PAINTBALL S.A.

THE INFORMATION CONTAINED IN THIS DRAWING IS THE SOLE PROPERTY OF GOG PAINTBALL S.A. ANY REPRODUCTION IN PART OR WHOLE WITHOUT THE WRITTEN PERMISSION OF GOG PAINTBALL S.A. IS PROHIBITED.

OU9005- AS005 urethane 70 durometer
 SSC010- 10-32 x 5/16 socket cap head stainless
 PIN005- .190 x .059 steel pin
 MAG004- 3/16 O.D. x .060 neodymium magnet
 zinc plated grade 50

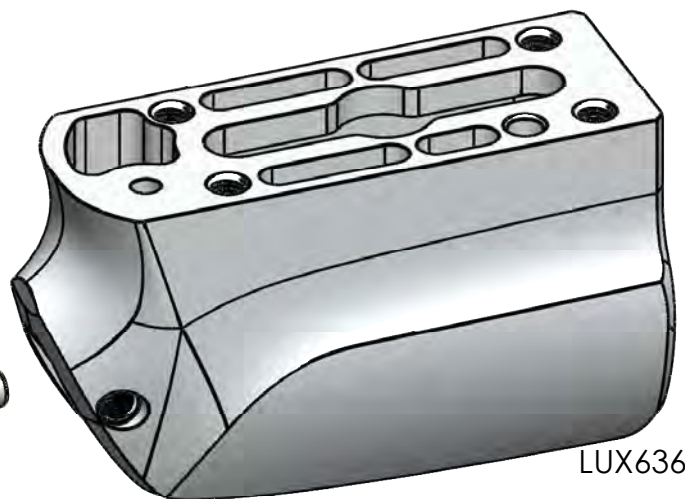
SSC010
 (BLUE
 LOCTITE242)



SHK138



OM9005
 (DOW33 GREASE)



LUX636

LUX437



LUX440



MAG004



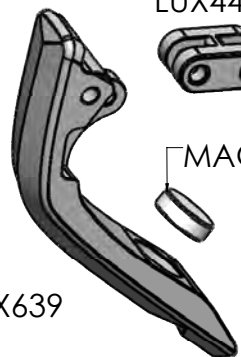
LUX447

MAG004



PIN005

LUX639



LUXE TM40 BOTTOMLINE ASM GUIDE

UNLESS OTHERWISE SPECIFIED: DIMENSIONS ARE IN INCHES SURFACE FINISH				FINISH:		DEBURR AND SHARP BRASS EDGES		DO NOT SCALE DRAWING		REVISION	
TOLERANCES LINEAR ANGULAR											
NAME		SIGNATURE		DATE				TITLE			
DRAWN											
CHECKED											
APPROVED											
MFG.											
Q.A.											
				MANAGER		CHRG. AGT.					

16 15 14 13 12 11 10 9 8 7 6 5 4 3 2 1

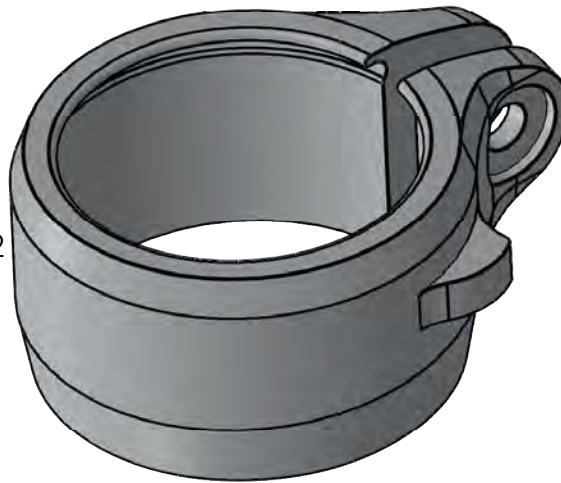
M
L
K
J
H
G
F
E
D
C
B
A

M
L
K
J
H
G
F
E
D
C
B
A

QLK405



LUX562



QLK106



QLK104



LUX565



PIN006



LUX410

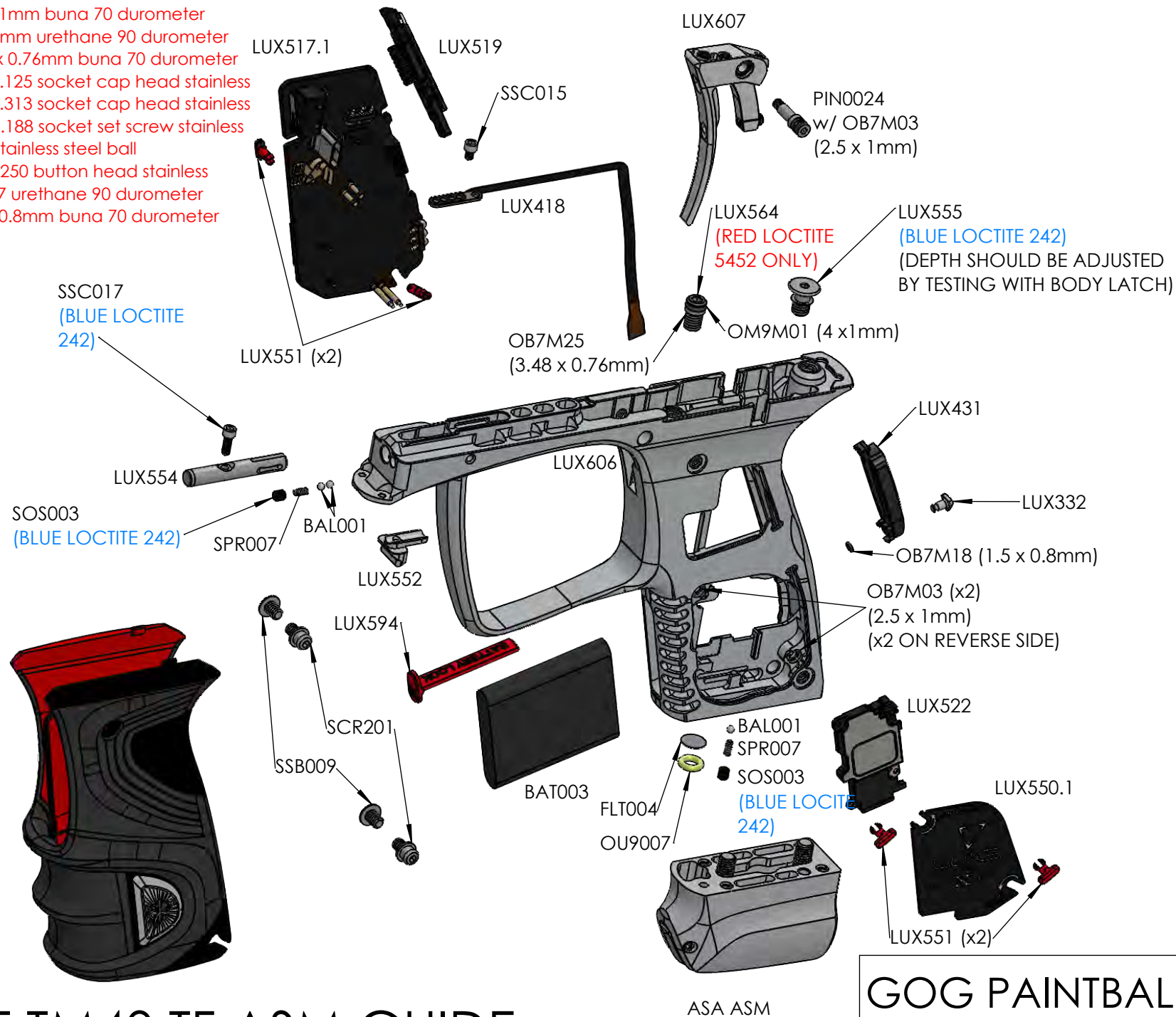


LUXE TM40 CFN ASM GUIDE

LUXE TM40 CFN ASM GUIDE				DO NOT SCALE DRAWING		REVISION
DATE	NAME	SIGNATURE	DATE	TITLE		
DESIGN						
CHG						
APPV						
MR						
QA						
MATERIAL				FINISH		
WELD				SCALE		
				SHEET 1 OF 1		

16 15 14 13 12 11 10 9 8 7 6 5 4 3 2 1

OB7M03- 2.5 x 1mm buna 70 durometer
 OM9M01- 4 x 1mm urethane 90 durometer
 OB7M25- 3.48 x 0.76mm buna 70 durometer
 SSC015- 2-56 x .125 socket cap head stainless
 SSC017- 2-56 x .313 socket cap head stainless
 SOS003- 4-48 x .188 socket set screw stainless
 BAL001- 2mm stainless steel ball
 SSB009- 6-32 x .250 button head stainless
 OM9007- AS007 urethane 90 durometer
 OB7M18- 1.5 x 0.8mm buna 70 durometer



LUXE TM40 TF ASM GUIDE

GOG PAINTBALL S.A.

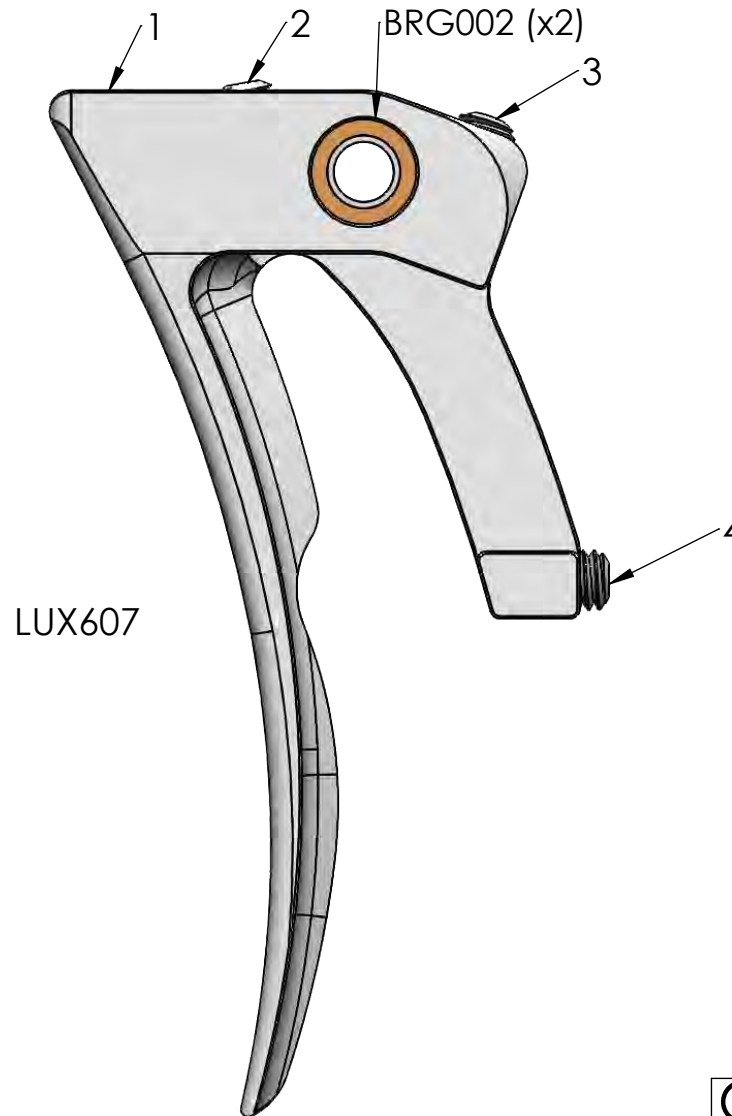
THE INFORMATION CONTAINED IN THIS DRAWING IS THE SOLE PROPERTY OF GOG PAINTBALL S.A. ANY REPRODUCTION IN PART OR WHOLE WITHOUT THE WRITTEN PERMISSION OF GOG PAINTBALL S.A. IS PROHIBITED.

1. APPLY **BLUE LOCTITE 242** TO ALL SCREWS (x4) AND INSERT INTO TRIGGER
2. SLIDE TRIGGER INTO FIXTURE
3. TIGHTEN SCREW 4
4. TIGHTEN 3, 2, AND 1
5. LOOSEN SCREWS 1, 2, AND 3 180 DEGREES
6. LOSSEN SCREW 4 ENOUGH FOR STEP 7
7. REMOVE FROM FIXTURE
8. TIGHTEN SCREW 4 ONE FULL TURN

SET SCREWS 1-4 ARE ALL SOS007 WITH BLUE LOCTITE 242

SCREW 1 MUST BE FLUSH WITH TOP OF TRIGGER

SOS007- 5-44 1/4 SOCKET SET SCREW BLACK OXIDE
BRG002- 1/4 DIAMETER x .109" WIDE (.140" INNER RACE)
STAINLESS ROLLER BEARING ABEC 3



LUXE TM40 TRIGGER ASM

GOG PAINTBALL S.A.

THE INFORMATION CONTAINED IN THIS DRAWING IS THE SOLE PROPERTY OF GOG PAINTBALL S.A. ANY REPRODUCTION IN PART OR WHOLE WITHOUT THE WRITTEN PERMISSION OF GOG PAINTBALL S.A. IS PROHIBITED.

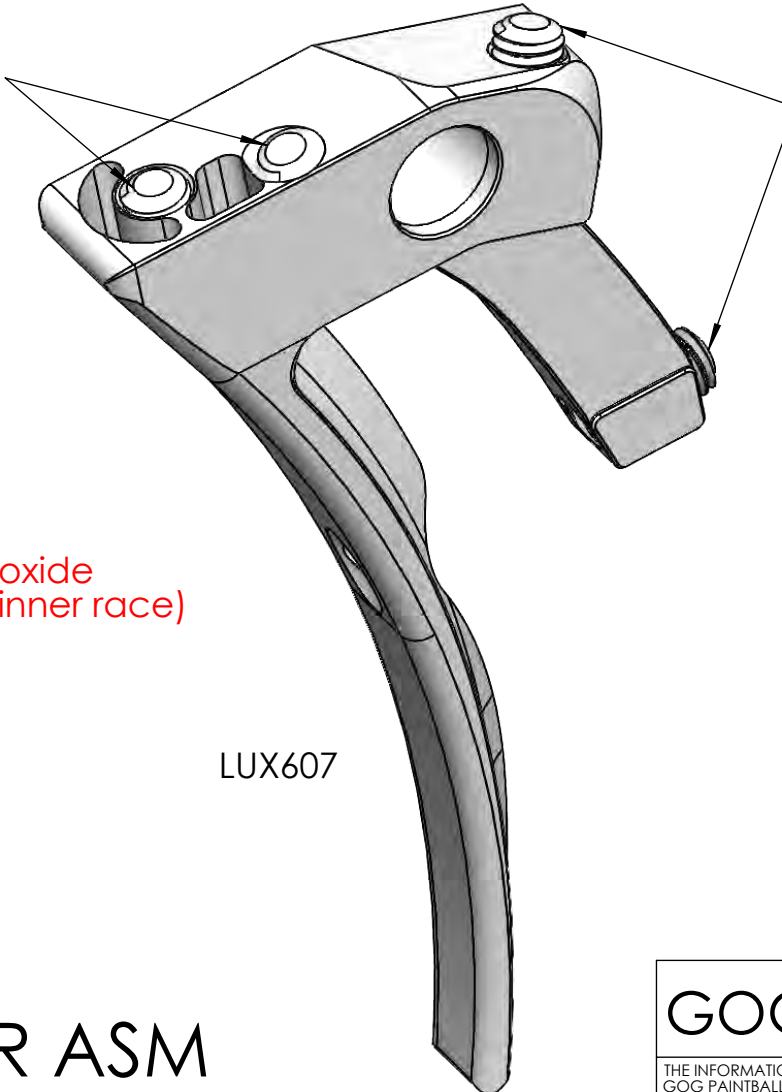
MUST INSERT BEARING
FROM THE SIDE

BRG002 (x2)



SOS007 (x2)
BLUE LOCTITE 242

SOS007 (x2)
BLUE LOCTITE 242



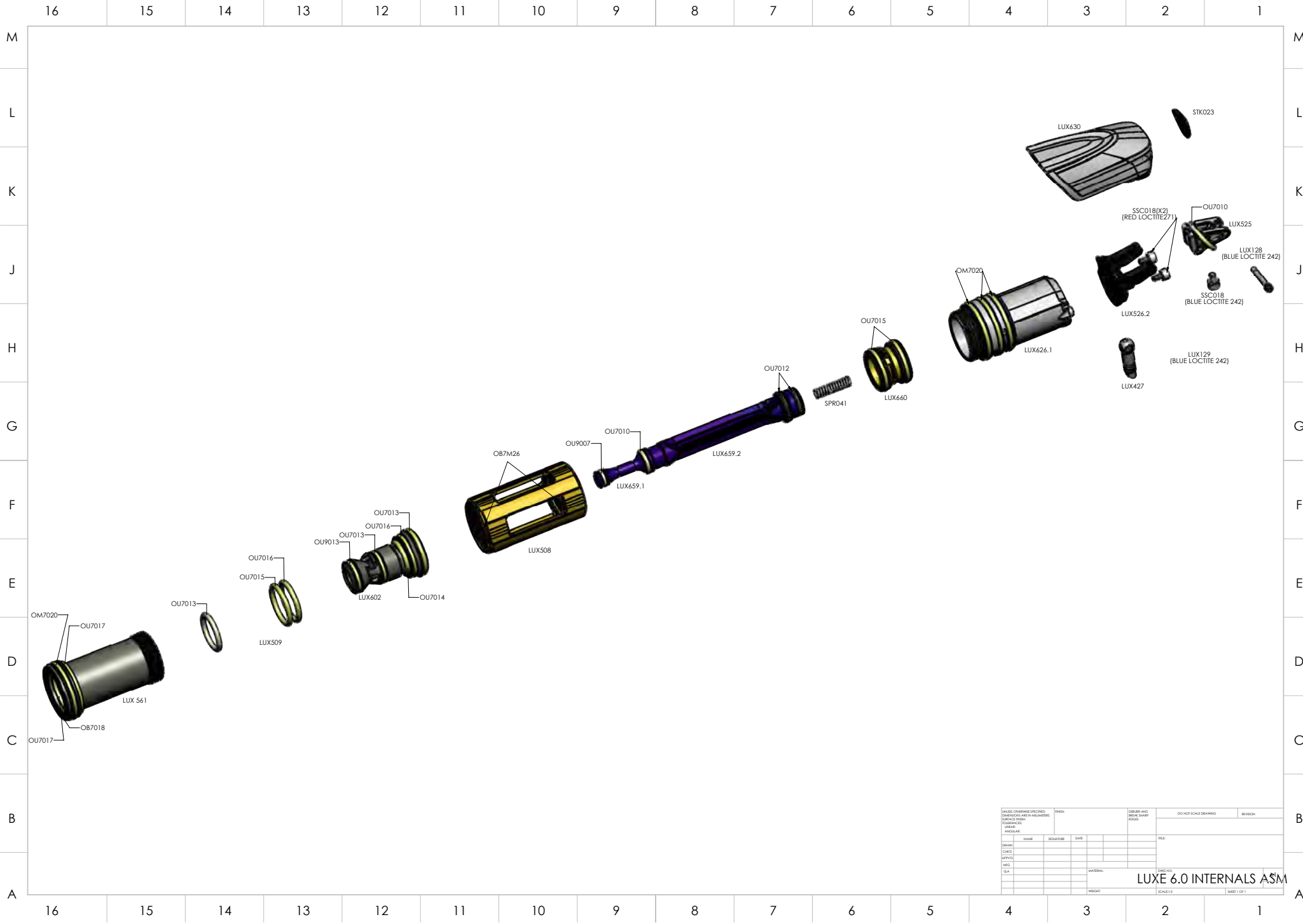
SOS007- 5-44 1/4 socket set screw black oxide
BRG002- 1/4 diameter x .109"wide (.140" inner race)
stainless roller bearing ABEC 3

LUX607

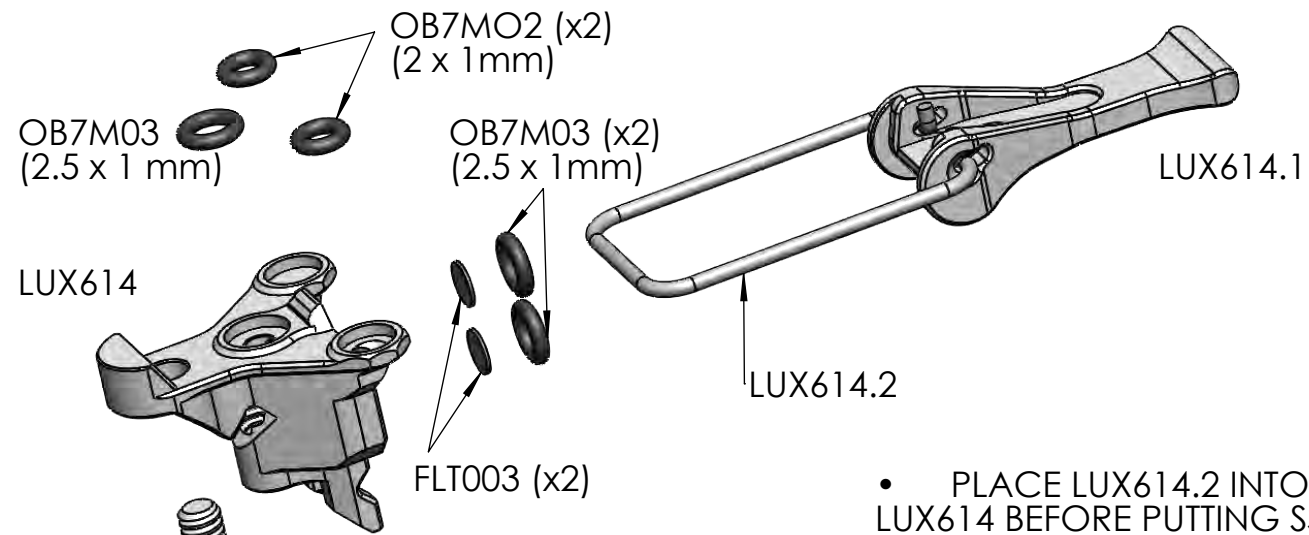
LUXE TM40 TRIGGER ASM

GOG PAINTBALL S.A.

THE INFORMATION CONTAINED IN THIS DRAWING IS THE SOLE PROPERTY OF
GOG PAINTBALL S.A. ANY REPRODUCTION IN PART OR WHOLE WITHOUT THE
WRITTEN PERMISSION OF GOG PAINTBALL S.A. IS PROHIBITED.



UNLESS OTHERWISE SPECIFIED: DIMENSIONS ARE IN MILLIMETERS TOLERANCES: FRACTIONS DECIMALS ANGLES:				FINISH		DEBURR AND BRAKE SHARP EDGES		DO NOT SCALE DRAWING		REVISION	
NAME		SIGNATURE		DATE				TSL:			
DRAWN:											
CHECKED:											
APPROVED:											
MFG:											
Q.A.											
				MATERIAL:		DINSG 60					

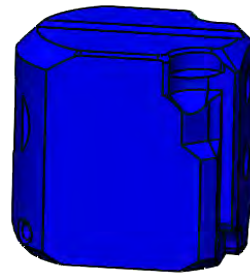


OB7M03- 2.5 x 1 mm buna 70 durometer
 OB7M02- 2 x 1 mm buna 70 durometer
 SSC019- 4-40 x 0.250" socket cap head stainless
 SSS016- 5-40 x 0.250" socket set screw cone stainless

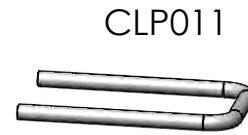
LUXE TM40 MANIFOLD ASM GUIDE

GOG PAINTBALL S.A.

THE INFORMATION CONTAINED IN THIS DRAWING IS THE SOLE PROPERTY OF GOG PAINTBALL S.A. ANY REPRODUCTION IN PART OR WHOLE WITHOUT THE WRITTEN PERMISSION OF GOG PAINTBALL S.A. IS PROHIBITED.



SHM414M



CLP011



SHM419



OB5003



OB7M30



SHM418



SHM116



OB5003



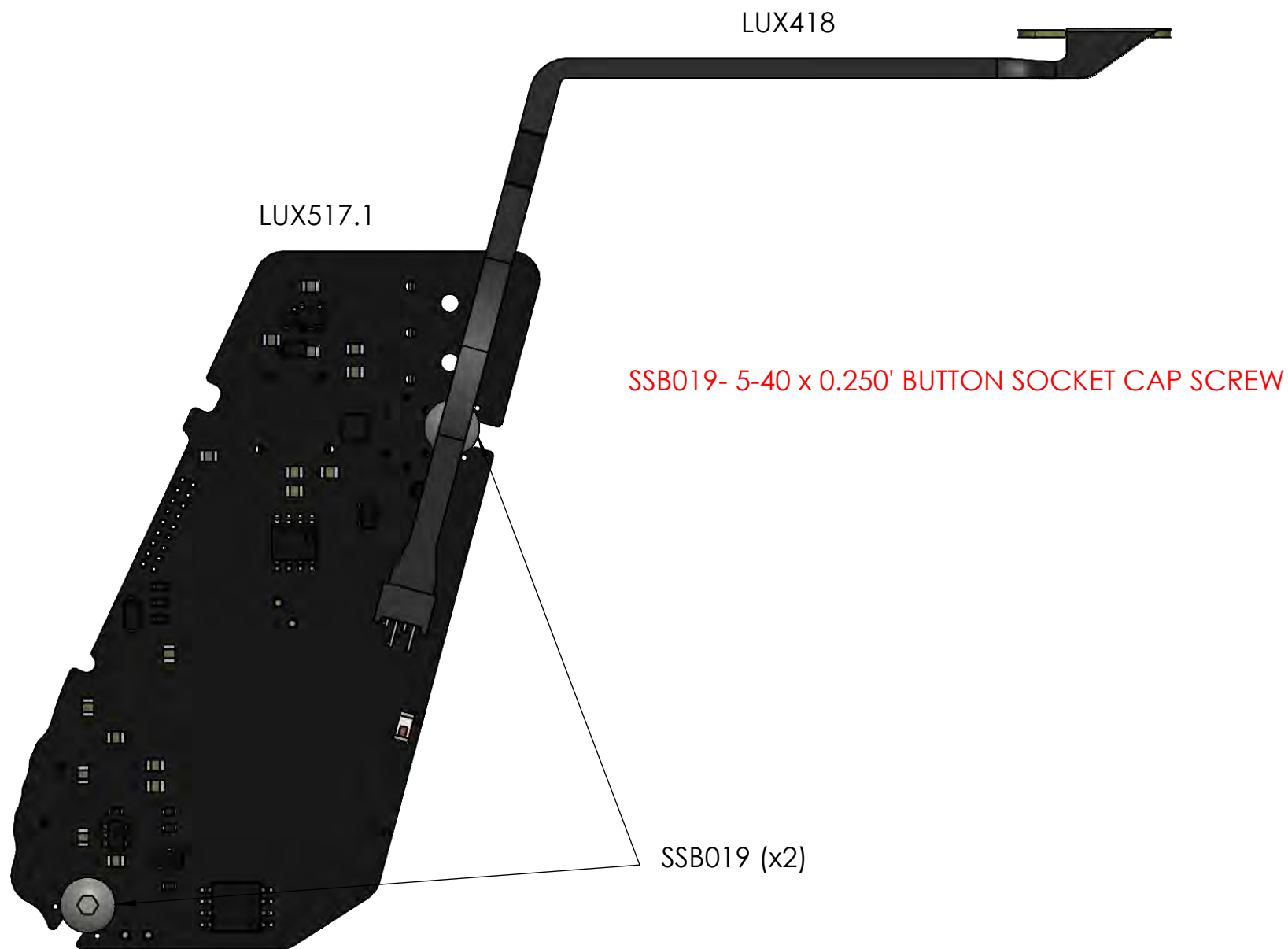
SHM415

OB7M31

Sheet1

GOG PAINTBALL S.A.

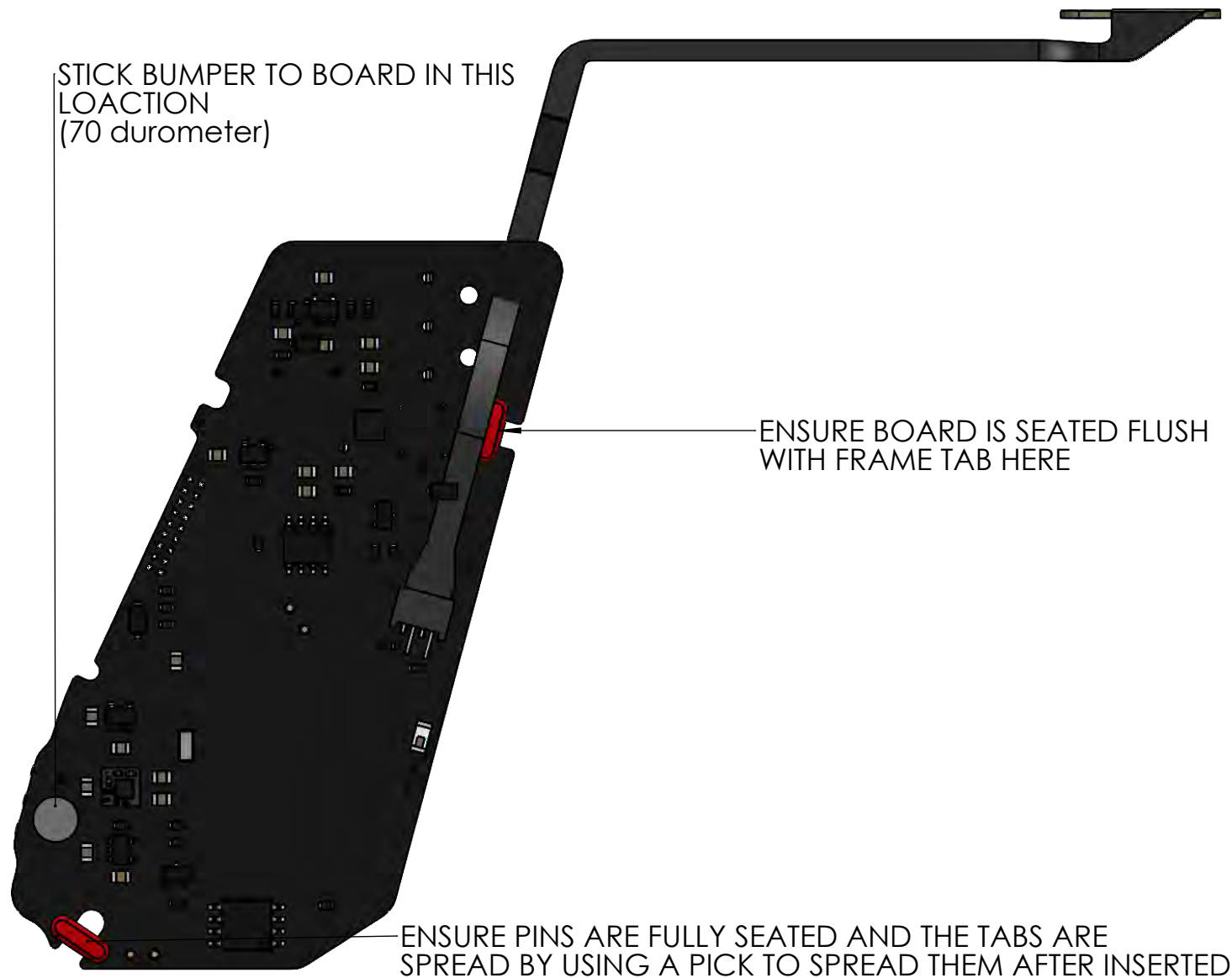
THE INFORMATION CONTAINED IN THIS DRAWING IS THE SOLE PROPERTY OF GOG PAINTBALL S.A. ANY REPRODUCTION IN PART OR WHOLE WITHOUT THE WRITTEN PERMISSION OF GOG PAINTBALL S.A. IS PROHIBITED.



MOTHER PCB BOARD ASM

GOG PAINTBALL S.A.

THE INFORMATION CONTAINED IN THIS DRAWING IS THE SOLE PROPERTY OF GOG PAINTBALL S.A. ANY REPRODUCTION IN PART OR WHOLE WITHOUT THE WRITTEN PERMISSION OF GOG PAINTBALL S.A. IS PROHIBITED.

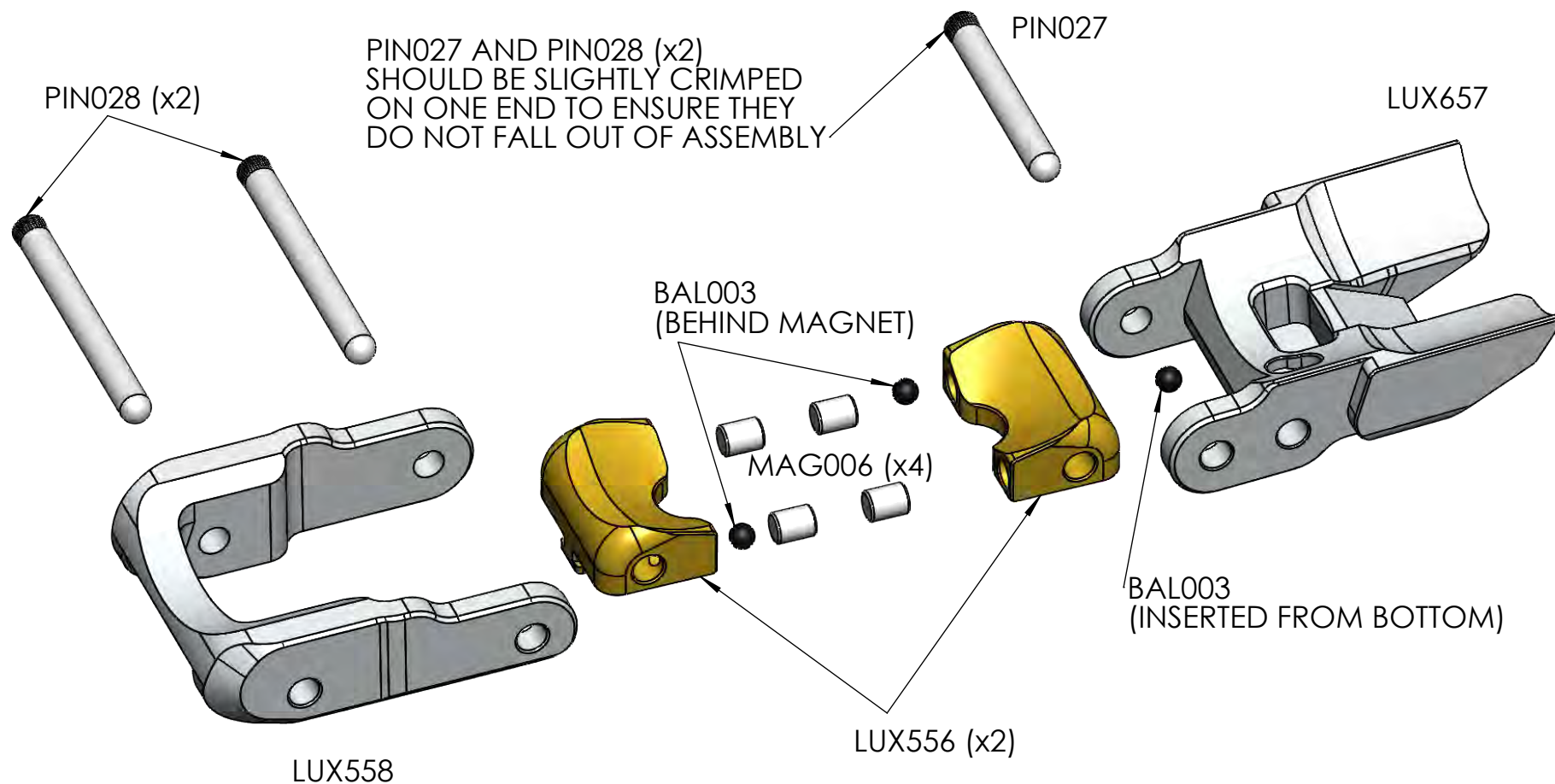


Sheet1

GOG PAINTBALL S.A.

THE INFORMATION CONTAINED IN THIS DRAWING IS THE SOLE PROPERTY OF GOG PAINTBALL S.A. ANY REPRODUCTION IN PART OR WHOLE WITHOUT THE WRITTEN PERMISSION OF GOG PAINTBALL S.A. IS PROHIBITED.

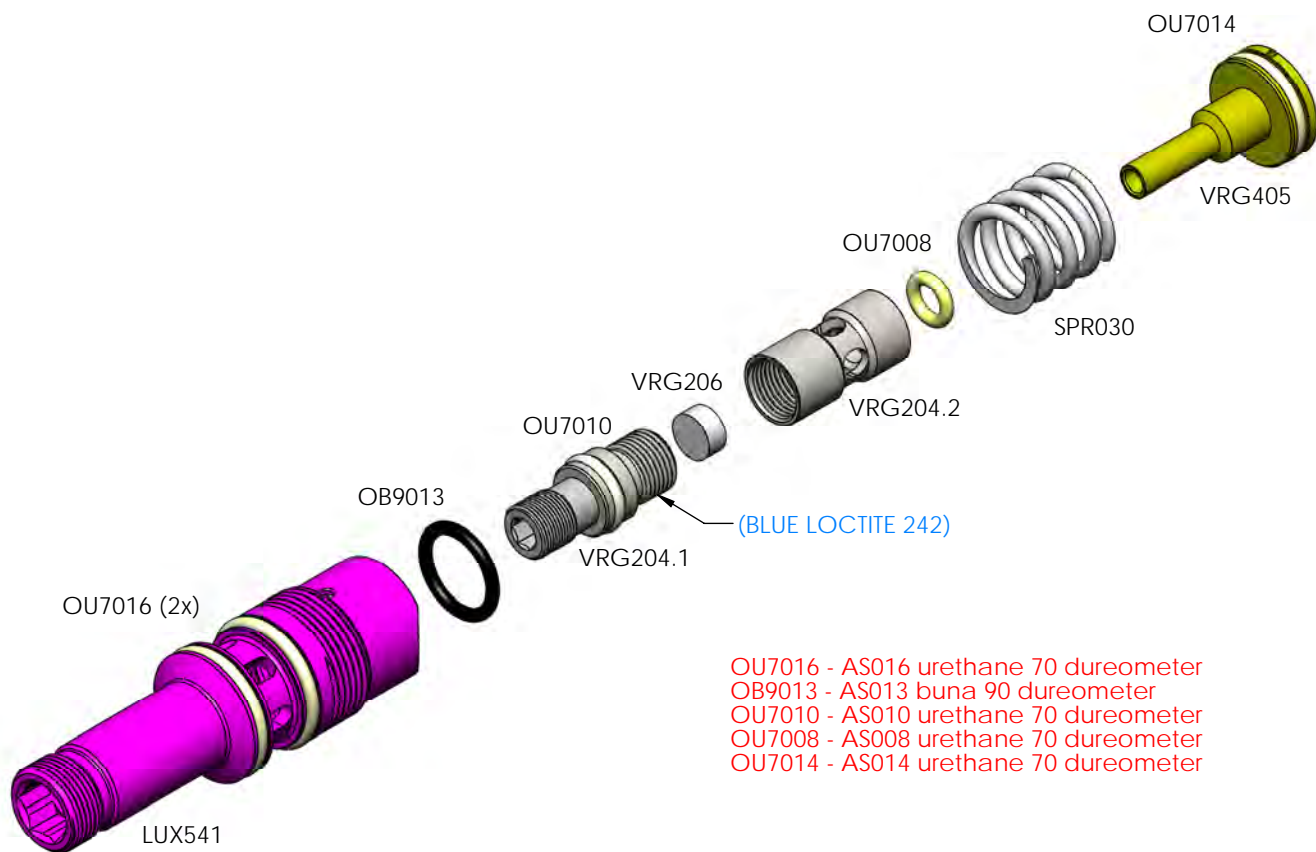
MAG006- 2mm O.D. x 2.5mm neodymium magnet zinc plated grade 50
BAL003- 0.062" buna ball
PIN028- 20mm x 2mm steel pin
PIN027- 16mm x 2mm steel pin



LUXE TM40 REAR LATCH ASM GUIDE

GOG PAINTBALL S.A.

THE INFORMATION CONTAINED IN THIS DRAWING IS THE SOLE PROPERTY OF GOG PAINTBALL S.A. ANY REPRODUCTION IN PART OR WHOLE WITHOUT THE WRITTEN PERMISSION OF GOG PAINTBALL S.A. IS PROHIBITED.

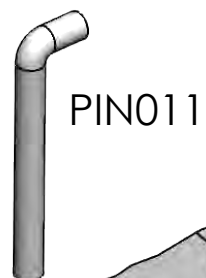


LUXE X REG ASM GUIDE

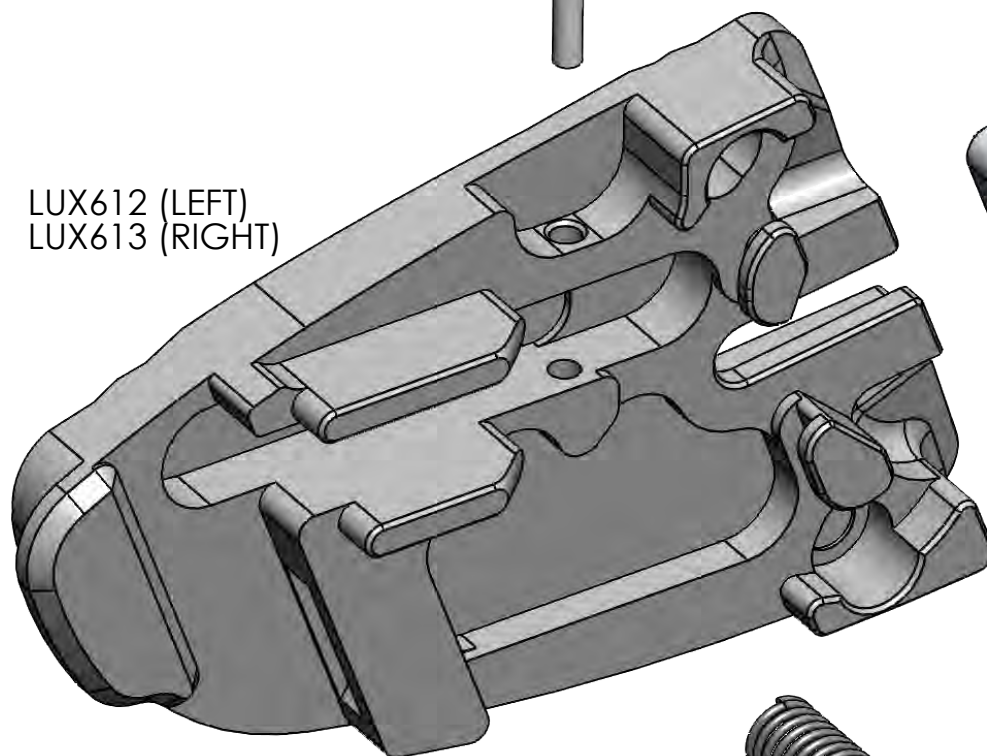
GOG PAINTBALL S.A.

THE INFORMATION CONTAINED IN THIS DRAWING IS THE SOLE PROPERTY OF GOG PAINTBALL S.A. ANY REPRODUCTION IN PART OR WHOLE WITHOUT THE WRITTEN PERMISSION OF GOG PAINTBALL S.A. IS PROHIBITED.

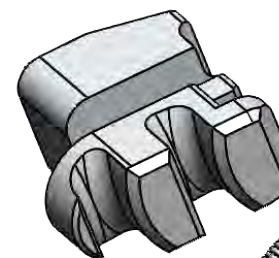
MAG001- .100 O.D. x .100
neodymium magnet
zinc plated grade 50



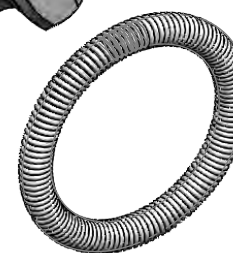
LUX612 (LEFT)
LUX613 (RIGHT)



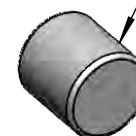
LUX503X (LEFT)
LUX504X (RIGHT)



SPR014



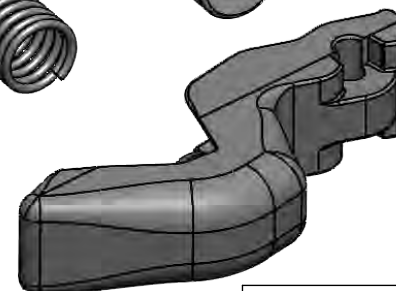
MAG001 (x2)



SPR036



LUX511



LUXE TM40 VSN ASM GUIDE

GOG PAINTBALL S.A.

THE INFORMATION CONTAINED IN THIS DRAWING IS THE SOLE PROPERTY OF GOG PAINTBALL S.A. ANY REPRODUCTION IN PART OR WHOLE WITHOUT THE WRITTEN PERMISSION OF GOG PAINTBALL S.A. IS PROHIBITED.